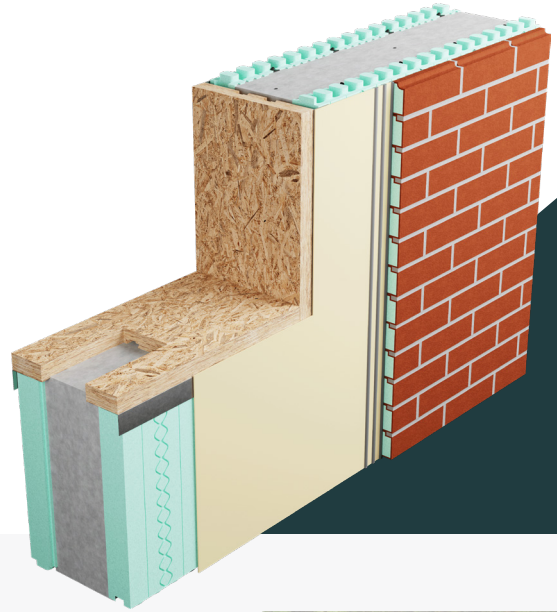




PREBUCK®

Treated LSL Engineered Framing



A Construction Revolution

ICF construction combined with Prebuck engineered window and door lumber provide the perfect wall solution. Offering the strongest, fastest and smartest construction solution, saves time and money, while building superior durability into every project. Prebuck is specifically designed for direct contact with concrete and non-corrosive metals.

Prebuck products are manufactured from engineered lumber (LSL) treated with zinc borate for exceptional resistance to insects and decay. They also feature MDI resin, the 100% waterproof bonding agent that turns to a durable plastic when cured.

Combining ICF technology with Prebuck's engineered lumber, you are guaranteed the most efficient construction solution available today.



Window & Door Buck

Prebuck Window and Door Buck provides a durable, engineered solution for punched openings using treated Laminated Strand Lumber (LSL). It ensures stable support for glazing and finishes, offers customizable options to reduce labor costs and features a cast-in-place design for secure concrete-to-finish integration.



Features & Benefits

- ✓ Easy self-aligning wall installation cuts days off setup time
- ✓ Durable treated LSL resists warping, twisting or fastener weakening
- ✓ Internal dovetail key-ways enhance attachment, reduce air infiltration and integrate seamlessly with ICF construction
- ✓ Optional galvanized flange system supports ICF bracing and flush attachment of components
- ✓ Meets AWPA UC2 standards and contributes to LEED points and NAHB Green Certification

Wet-Set Sill

The Prebuck Wet-Set Sill is a durable, engineered solution for straighter, flatter sill plates, made from 1-½" (38 mm) treated Laminated Strand Lumber (LSL). Designed for ICF walls, it features oblong countersunk holes, allowing contractors to set the sill plate on the same day walls are poured.



Features & Benefits

- ✓ 16' (4.8 m) standard length with oblong countersunk openings
- ✓ Treated LSL product resists delamination, warping, twisting and cupping
- ✓ High bending strength reduces the need for internal bracing before concrete pours
- ✓ Designed for direct contact with concrete and meets AWPA standards for use category 2 (uc2)
- ✓ Non-corrosive to metals, insect and fungus resistant
- ✓ NAHB National Green Building Certified and contributes to LEED Points