
PRODUCT DESCRIPTION

Prebuck Wet-Set Sill Plate offers the contractor, owner and design community an engineered solution for flatter, straighter sill plates. Produced with 1-½" (38 mm) thick, treated Laminated Strand Lumber (LSL), Prebuck Wet-Set Sill Plate is produced straight and stays straight. Made with materials that allow direct contact with concrete, the oblong countersunk holes lets the contractor set the sill plate the same day they pour the walls. Prebuck Wet-Set Sill Plate will not cup, twist or warp over time and can be cut to custom design specifications.

BASIC USES

Prebuck fabricated solutions feature high strength material with high modulus of elasticity. Borate treatment offers protection against moisture, insects, mold and mildew, making Prebuck a healthy and sustainable solution. Prebuck Wet-Set Sill Plate is ideal for many wall structure types but is ideally suited to fit ICF wall widths.

FEATURES & BENEFITS

- Customized engineered sill system
- 16' (4.8m) standard length
- Oblong countersunk openings
- Treated LSL product will not delaminate, become spongy or loosen fastener strength – will not cup, twist, warp, or curl
- Designed for direct contact with concrete
- Non-corrosive to metals
- Insect and fungus resistant
- AWWA standards for use category 2 (uc2)
- Contributes to LEED points
- NAHB National Green Builder Certified

AVAILABILITY

Prebuck is manufactured to exacting specification in our Grand Rapids, MI facility and shipped throughout North America. Contact us to find a representative near you.

HANDLING & STORAGE

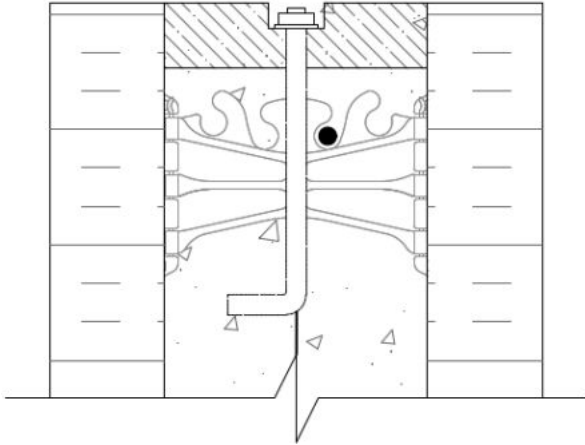
- While transporting Prebuck Wet-Set Sill Plate, keep the load level and covered with a weatherproof tarp, protecting the edges and ends from damage.
- Store the Prebuck Wet-Set Sill Plate off the ground under roof, tarp, or wrap, protected from moisture and weather, with proper ventilation.
- Store Prebuck Wet-Set Sill Plate in a flat orientation properly supported to prevent warping or deformation

ASSEMBLY STYLES

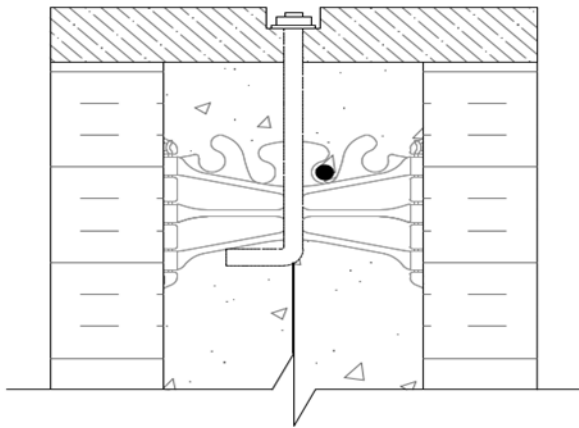
Built with the contractor in mind, Prebuck Wet-Set Sill Plate allows for various degrees of customization.

Choose from the following assembly styles:

- **Option 1: Prebuck Inset Wet-Set Sill Plate**
 - Designed to sit within the ICF wall



- **Option 2: Prebuck Full Width Wet-Set Sill Plate**
 - Designed to rest on top of the ICF wall, ensuring a stable anchoring point when installing trusses.



COMPATIBILITY

Prebuck Wet-Set Sill Plate should be properly installed in accordance with local building codes. The product has been tested for compatibility with a range of sealant, flashing and weather resistive barrier products as listed below. Contact your representative for a comprehensive list.

- ExoAir® 110AT
- ExoAir 230
- Dymonic® 100
- Aquafash®
- EnviroDri®
- Vulkem® 116
- Backstop Flash & Fill

LIMITATIONS

Prebuck Wet-Set Sill Plate is:

- Not to be left exposed indefinitely.
- Not to come into direct contact with the ground.
- Not to be buried below grade.

WARRANTY

Prebuck warrants its products to be free of defects in materials but makes no warranty as to appearance or color. Since methods of application and on-site conditions are beyond our control and can affect performance, Prebuck makes no other warranty, expressed, or implied including warranties of MERCHANTABILITY and FITNESS FOR A PARTICULAR PURPOSE with respect to Prebuck Products. Prebuck's sole obligation shall be, at its option, to replace or refund the purchase price of the quantity of Prebuck products proven to be defective, and Prebuck shall not be liable for any loss or damage.

A repair or replacement warranty is available on all Tremco Products. Visit <https://www.tremcosealants.com/warranties/> for details.

TYPICAL PHYSICAL PROPERTIES

TYPICAL PHYSICAL PROPERTIES		
Property	Test Method	Typical Results
Density	ASTM D1037	38 pcf
Product Moisture Content	ASTM D1037	6 to 8%
Flame Spread	ASTM E84	140
Thermal Properties	ASTM E518	1.25 R /in.
Use in Direct Contact with Concrete	AWPA Category 2 (UC2)	APPROVED
National Green Building Certification	ICC 700-2008	Certification #000008
Specific Gravity – Face		0.5
Specific Gravity – Edge		0.42
Florida Product Approval		#FL6527-R11

Please refer to our website at www.tremcosealants.com for the most up-to-date Product Data Sheets.

NOTE: All Nudura Safety Data Sheets (SDS) are in alignment with the Globally Harmonized System of Classification and Labelling of Chemicals (GHS) requirements.

WDB-DS/1025