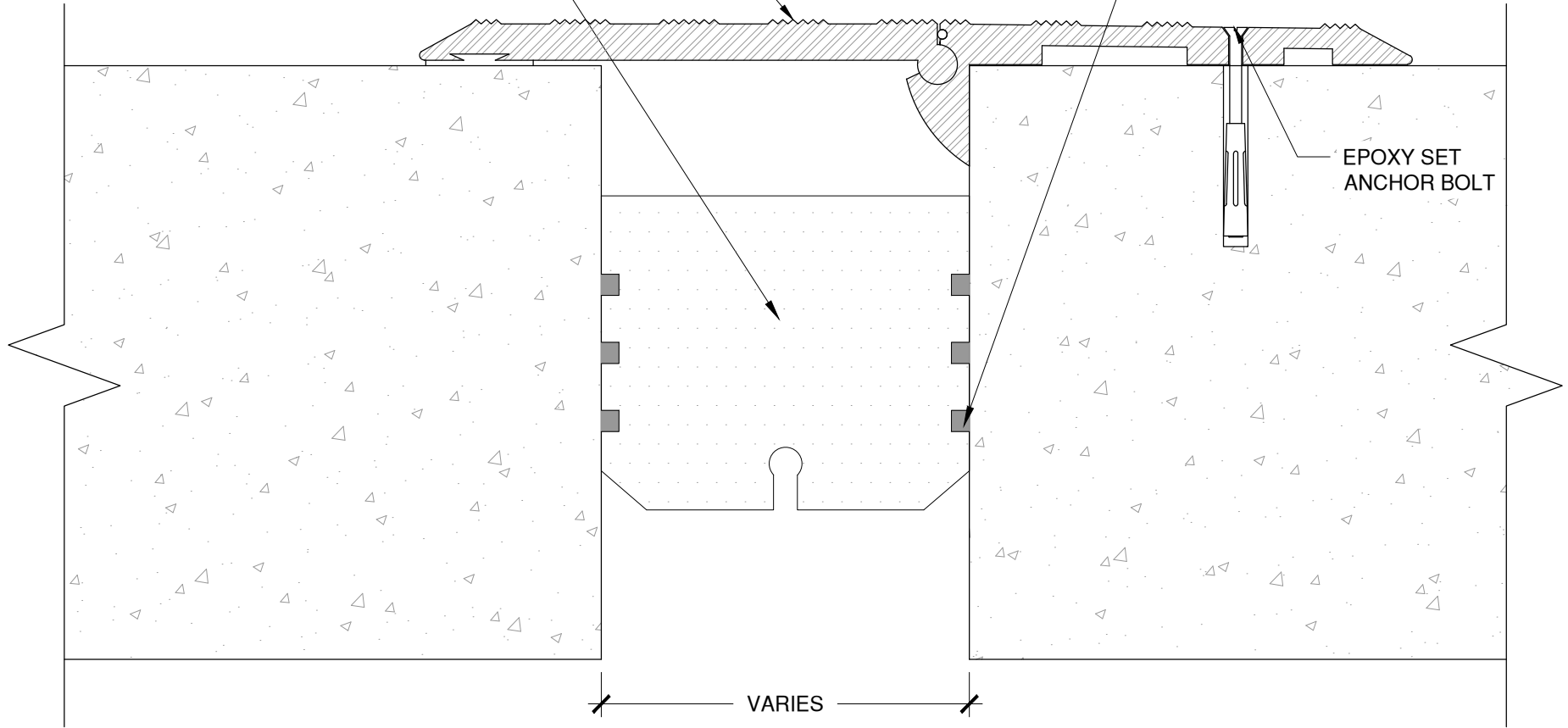


HEAVY DUTY COVER PLATE WITH
SLIP-RESISTANT SERRATED PROFILE,
IMPACT/SOUND DAMPER, AND
ANTI-VIBRATION SEAL

WILLSEAL CLOSED CELL FOAM
WITH ENGINEERED PROFILE

FIELD APPLIED EPOXY
(BOTH SIDES OF JOINT)
EPOXY SUPPLIED

EPOXY SET
ANCHOR BOLT



NOTE: RECESS JOINT 1- $\frac{1}{4}$ " FROM JOINT SURFACE.

FOR COVER PLATE INSTALLATION, SEE SUPPLIED
INSTRUCTIONS.

The architecture, engineering, and design of the project using the Willseal products are the responsibility of the project's design professional. All products and systems must comply with local building codes and standards. This detail is for general information and guidance only and Willseal specifically disclaims any liability for the use of this detail. The project design professional determines, in its sole discretion, whether this detail or a functionally equivalent detail is best suited for the project. This detail is subject to change without notice. Contact Willseal to ensure you have the most recent version.

Willseal Coreseal



Detail: Willseal Coreseal at Floor to Floor Application with Heavy Duty Cover Plate

File Name:

Drawn by: HDE

Checked by: AM

Scale: NTS

Date: 7/19/2022

WC-FF-CP-01



Willseal Technical Support: 800-274-2813

www.tremcocpg.com

Construction Products Group