

TREMPROOF 260  
AT 100 WET MILS

PARASEAL LG, BENTONITE SIDE  
FACING INSTALLER

SEAMS OVERLAPPED 4" MIN. AND  
SECURED WITH WIDE CROWN BOX  
STAPLES EVERY 3" O.C. AND WITH  
NAILS AND WASHERS EVERY 24" O.C.  
(SEE SEAM DETAILS)

SUPERSTOP AT COLD  
JOINTS, 2" FROM FACE OF  
WALL

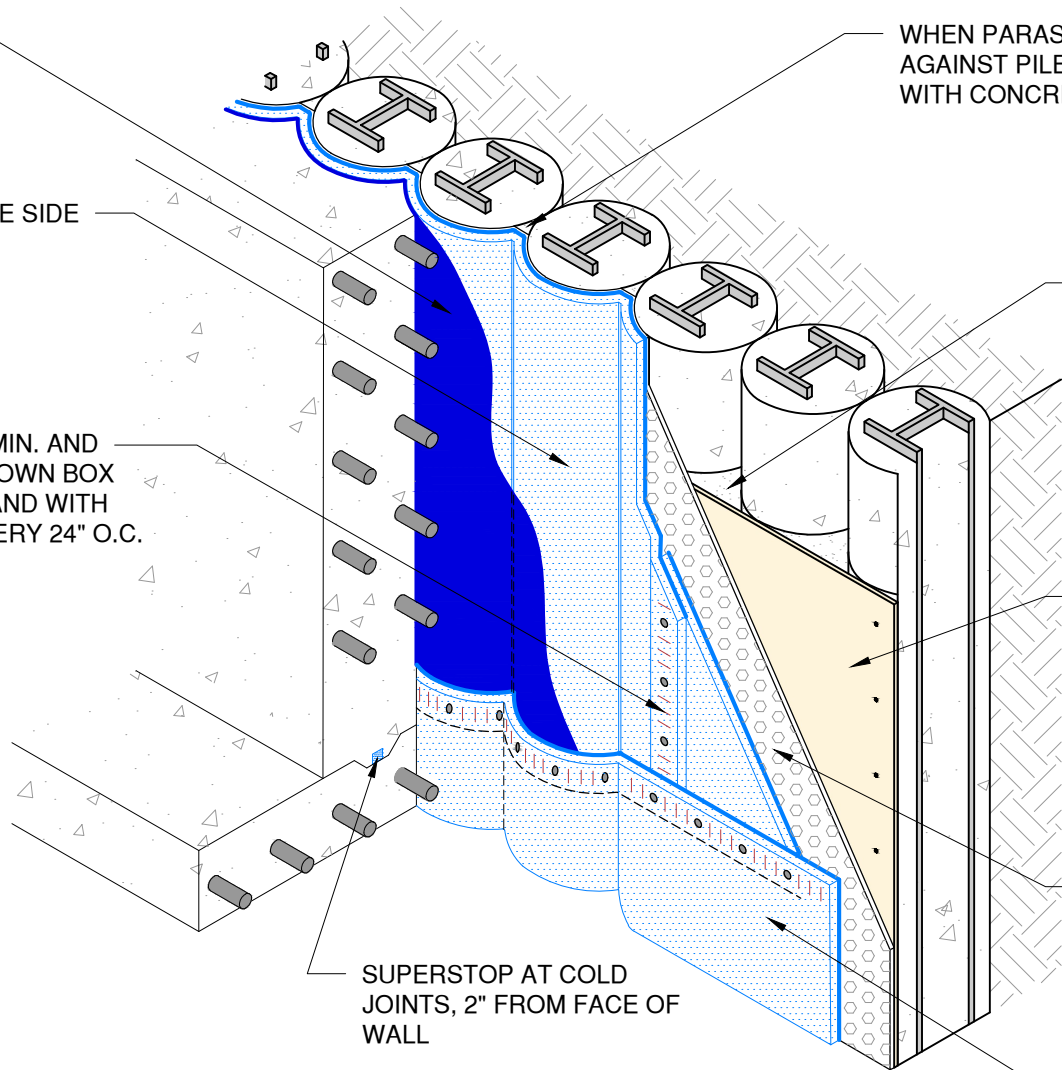
WHEN PARASEAL LG IS INSTALLED  
AGAINST PILE, FILL EACH "CROTCH"  
WITH CONCRETE GROUT FIRST

OPTIONAL TECHNIQUE: SAND FILL  
BEHIND EXTERIOR GRADE PLYWOOD AT  
ROUGH PILES (REFER TO APPLICATION  
INSTRUCTIONS)

OPTIONAL TECHNIQUE:  $\frac{3}{4}$ " MIN.  
TREATED PLYWOOD (REFER TO  
APPLICATION INSTRUCTIONS)

TREMDRAIN, AS SPECIFIED

PARASEAL LG STARTER STRIP  
TO EXTEND 6" MIN. BELOW TOP  
OF FOOTING



NOTES: PARASEAL PRODUCTS REQUIRE A MIN 24 PSF OF  
COMPACTION/CONFINEMENT IN ORDER TO FUNCTION AS DESIGNED.

NOT RECOMMENDED FOR USE IN SUBMERGED CONDITIONS.

The architecture, engineering, and design of the project using the Tremco products are the responsibility of the project's design professional. All products and systems must comply with local building codes and standards. This detail is for general information and guidance only and Tremco specifically disclaims any liability for the use of this detail. The project design professional determines, in its sole discretion, whether this detail or a functionally equivalent detail is best suited for the project. This detail is subject to change without notice. Contact Tremco to ensure you have the most recent version.

**TREMPROOF TWS BLINDSIDE WALL**



Tremco Technical Support: 866-209-2404

Detail: TREMPROOF TWS Blindsided Wall over Augered Caisson

Drawn by: HDE

Checked by: WH

Scale: NTS

Date: 4/27/2022

File Name:

TWS-BSW-21



Construction Products Group

[www.tremcocpg.com](http://www.tremcocpg.com)