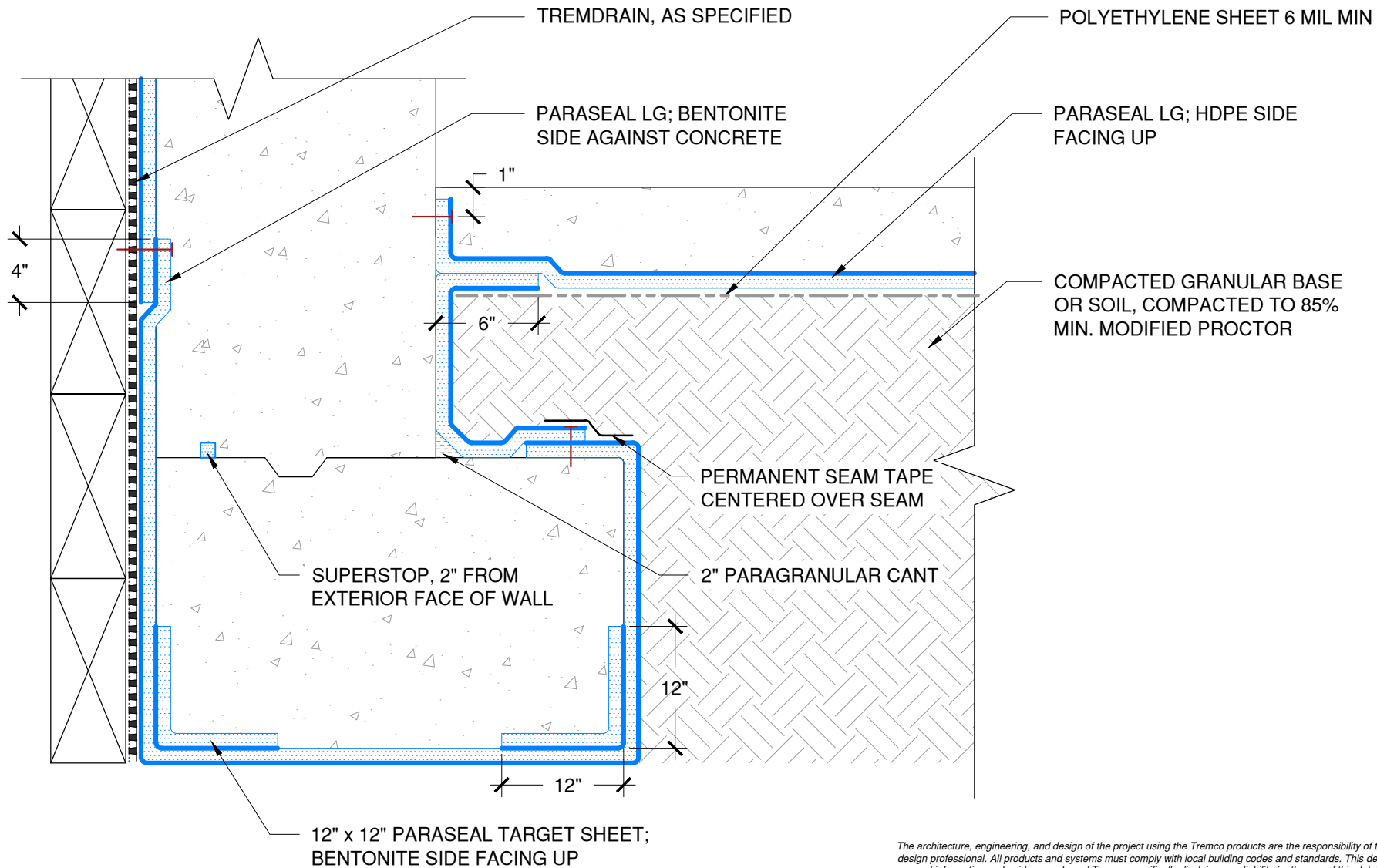


NOTE:
 PARASEAL PRODUCTS REQUIRE A MIN 24 PSF OF
 COMPACTION/CONFINEMENT IN ORDER TO FUNCTION AS DESIGNED
 NOT RECOMMENDED FOR USE IN SUBMERGED CONDITIONS



The architecture, engineering, and design of the project using the Tremco products are the responsibility of the project's design professional. All products and systems must comply with local building codes and standards. This detail is for general information and guidance only and Tremco specifically disclaims any liability for the use of this detail. The project design professional determines, in its sole discretion, whether this detail or a functionally equivalent detail is best suited for the project. This detail is subject to change without notice. Contact Tremco to ensure you have the most recent version.

Paraseal LG Below Slab on Grade - HDPE Side Up



Tremco Technical Support: 866-209-2404

Detail: Paraseal LG Below Slab on Grade Footing/Floor Slab to Blindside Wall

Drawn by: HDE

Checked by: WH

Scale: NTS

Date: 5/23/2022

File Name:

PE-BSOG-LG-T-05



Construction Products Group

www.tremcocpg.com