

Loop filled flush with TREMproof 6100

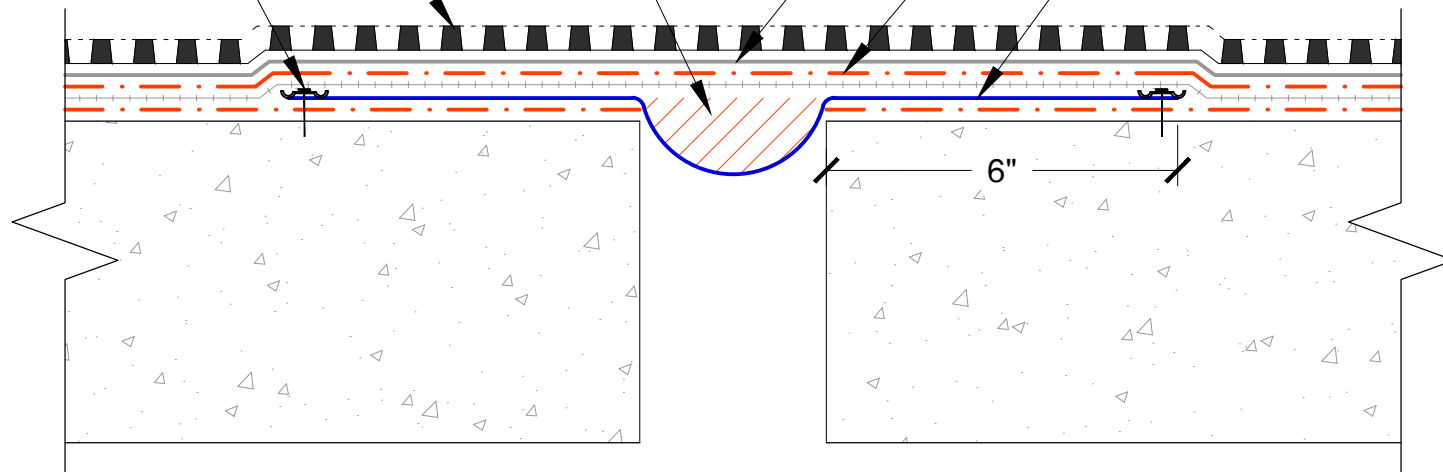
Tremco Protection Course

TREMDrain, as specified

TREMproof 6100 with embedded reinforcing fabric as specified

Terminate both sides of Elastomeric Sheeting with Paraterm Bars (optional)

Elastomeric Sheeting embedded in TREMproof 6100, centered over joint



Note: TREMprime QD or Tremco approved primer must be applied before the application of TREMproof 6100

**TREMCO**

www.tremcosealants.com

3735 Green Road \* Beachwood, OH 44122  
Phone : 866-209-2404 \* Fax: 216-766-5535

Project:

Detail: TREMproof 6100 at Floor to Floor Expansion Joint Loop Filled

Sheet Number:

File Name:

H-EJ-FF-04

This detail is intended for conceptual purposes only.

Drawn by: KAB

Checked by: WH

Scale: None

Date: 8/1/2018