

Dymonic 100 over closed cell backer rod

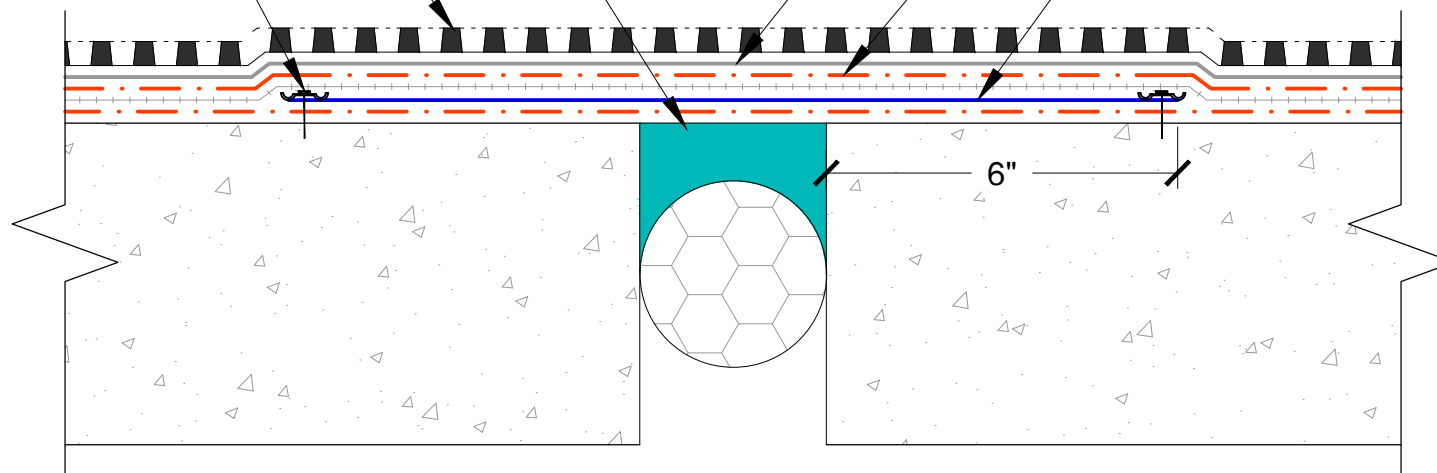
TREMDrain, as specified

Terminate both sides of Elastomeric Sheeting with Paraterm Bars (optional)

Tremco Protection Course

TREMproof 6100 with embedded reinforcing fabric as specified

Elastomeric Sheeting embedded in TREMproof 6100, extend 6" minimum on either side of joint



Note: TREMprime QD or Tremco approved primer must be applied before the application of TREMproof 6100

TREMCO

www.tremcosealants.com

3735 Green Road * Beachwood, OH 44122
Phone : 866-209-2404 * Fax: 216-766-5535

Project:

Detail: TREMproof 6100 at Floor to Floor Expansion Joint with Sealant

Sheet Number:

File Name:

H-EJ-FF-01

This detail is intended for conceptual purposes only.

Drawn by: KAB

Checked by: WH

Scale: None

Date: 8/1/2018