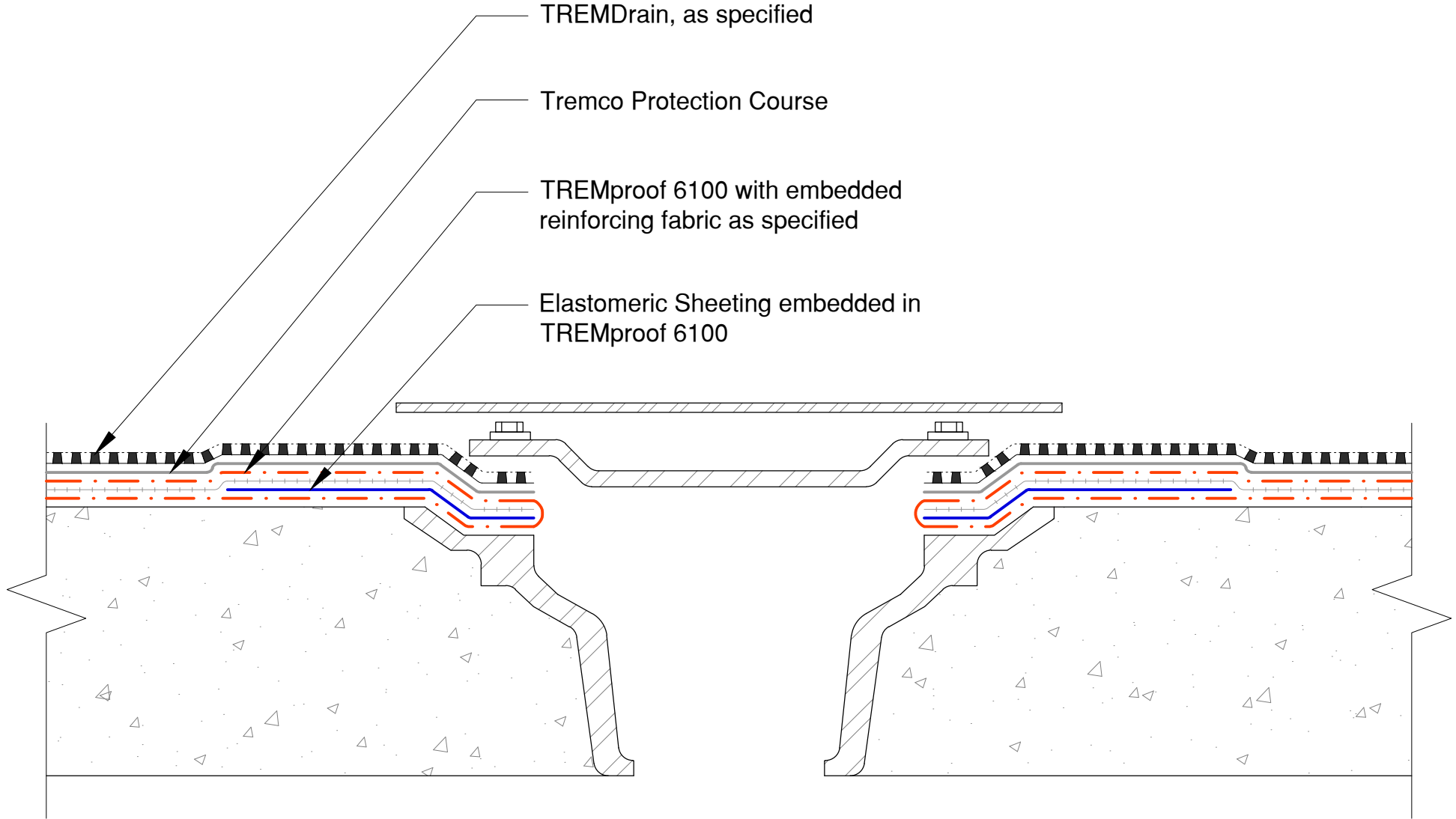


TREMDrain, as specified

Tremco Protection Course

TREMproof 6100 with embedded reinforcing fabric as specified

Elastomeric Sheeting embedded in TREMproof 6100



Note: TREMprime QD or Tremco approved primer must be applied before the application of TREMproof 6100

**TREMCO**

www.tremcosealants.com

3735 Green Road \* Beachwood, OH 44122  
Phone : 866-209-2404 \* Fax: 216-766-5535

Project:

Detail: TREMproof 6100 at Drain

Sheet Number:

File Name:

H-D-01

This detail is intended for conceptual purposes only.

Drawn by: KAB

Checked by: WH

Scale: None

Date: 8/1/2018