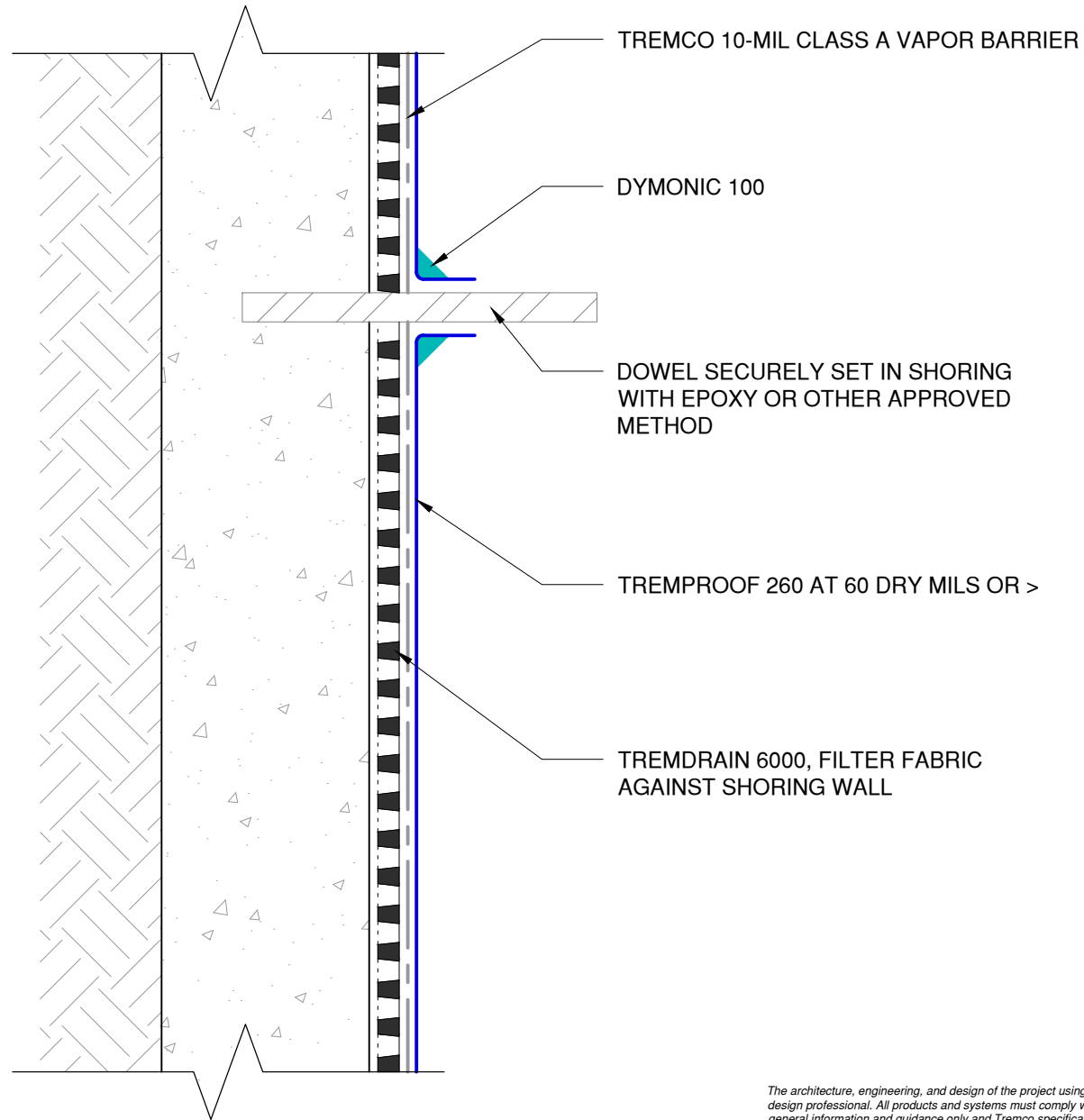


NOTE: NOT INTENDED FOR SUBMERGED OR HYDROSTATIC HEAD CONDITIONS



*The architecture, engineering, and design of the project using the Tremco products are the responsibility of the project's design professional. All products and systems must comply with local building codes and standards. This detail is for general information and guidance only and Tremco specifically disclaims any liability for the use of this detail. The project design professional determines, in its sole discretion, whether this detail or a functionally equivalent detail is best suited for the project. This detail is subject to change without notice. Contact Tremco to ensure you have the most recent version.*

**TREMPROOF 260 BLINDSIDE**

Detail: TREMPROOF 260 with Tremco 10-Mil Class A Vapor Barrier at Blindside Wall Dowel Penetration - Option 1

File Name:

F-BSW-VB-P-01

Drawn by: HDE

Checked by: WH

Scale: NTS

Date: 2/21/2023



Tremco Technical Support: 866-209-2404

[www.tremcocpg.com](http://www.tremcocpg.com)



Construction Products Group