

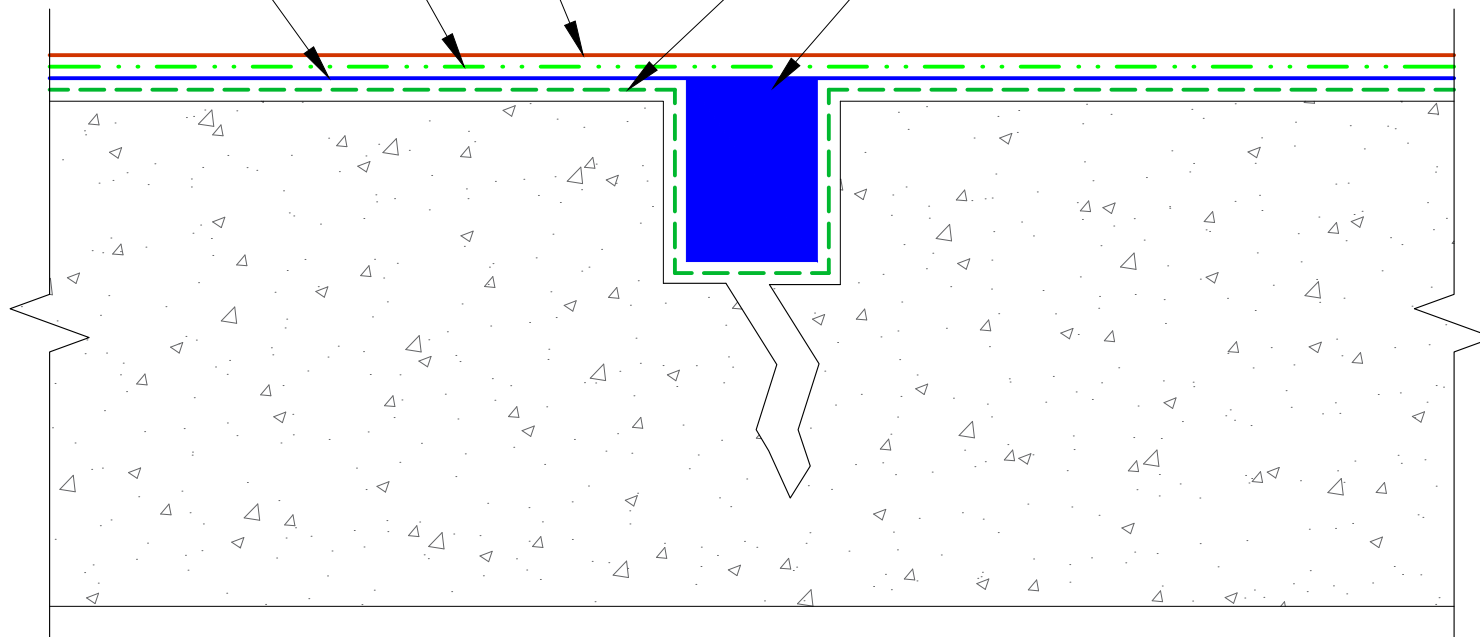
Tremco PUMA TC*

Tremco PUMA WC*
w/aggregate fully loaded

Tremco PUMA BC*

Tremco PUMA Primer*

Crack routed to a min. $\frac{1}{4}$ " wide by $\frac{1}{2}$ " deep and
fill with Tremco PUMA BC* or BC LM*



*A component of the Vulkem®EWS Traffic Coating System with PUMA (polyurethane methacrylate)

TREMCO

www.tremcosealants.com

3735 Green Road * Beachwood, OH 44122
Phone : 866-209-2404 * Fax: 216-766-5535

Detail: Vulkem®EWS Vehicular System at Cracks Greater Than 1/16"

Sheet Number:

File Name:

EWS-V-G-05

This detail is intended for conceptual purposes only.

Drawn by: KAB

Checked by: EL

Scale: None

Date: 11/7/2019