

TREMDrain (optional)
provides vapor diffusion

Insulation

TREMDrain Drainage Mat,
as specified

Tremco Protection Course

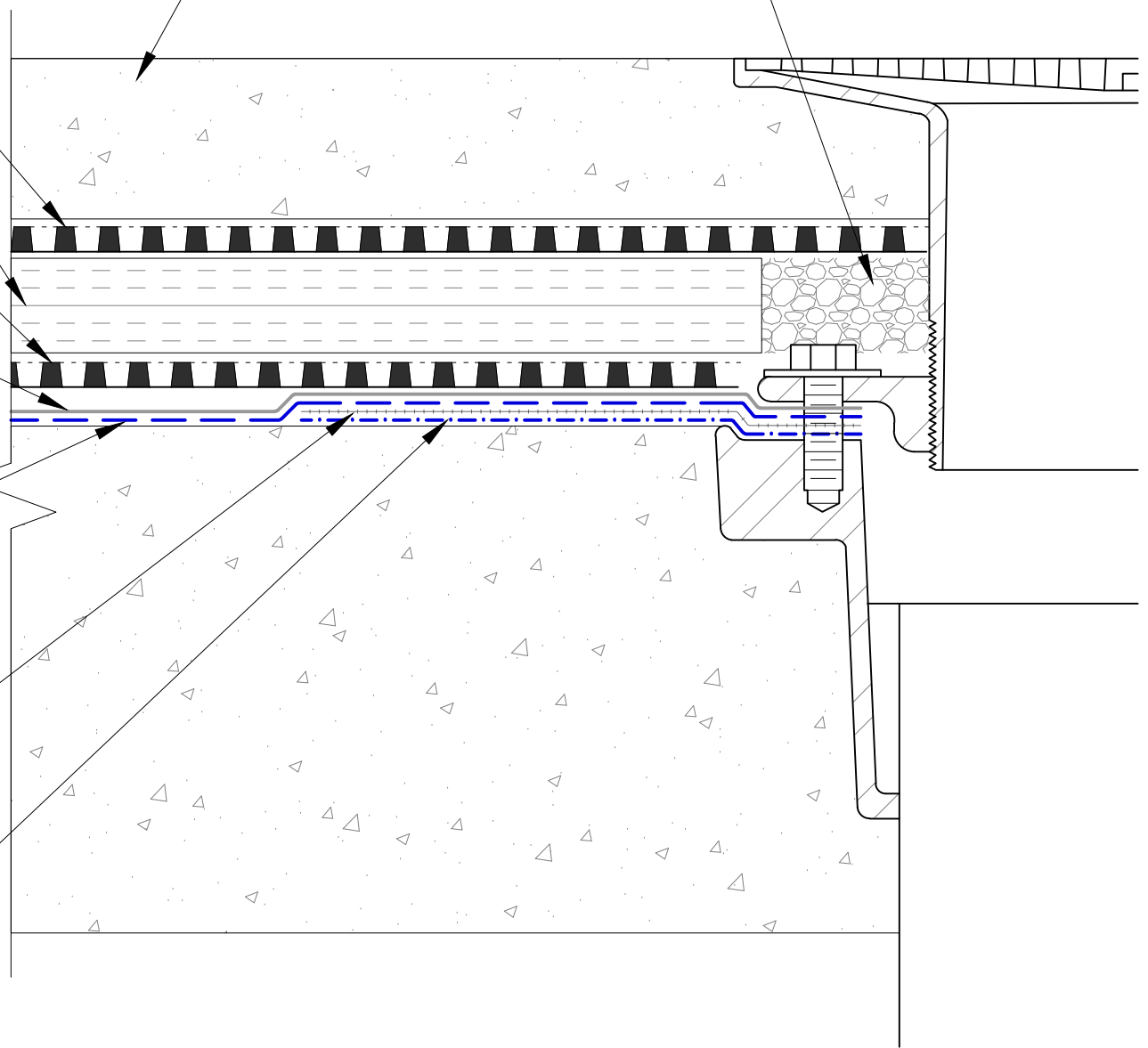
TREMproof 250GC

Reemay fabric, fully embedded
in membrane

Detail coat of TREMproof 250GC
at 30 mils

Topping slab

Ballast as filler



TREMCO

www.tremcosealants.com

3735 Green Road * Beachwood, OH 44122
Phone : 866-209-2404 * Fax: 216-766-5535

Detail: TREMproof 250GC at Split Slab Bi-Level Drain Detail with Reemay Fabric

Sheet Number:

File Name:

C-250GC-D-03

This detail is intended for conceptual purposes only.

Drawn by: KAB

Checked by: WH

Scale: None

Date: 3/12/2018