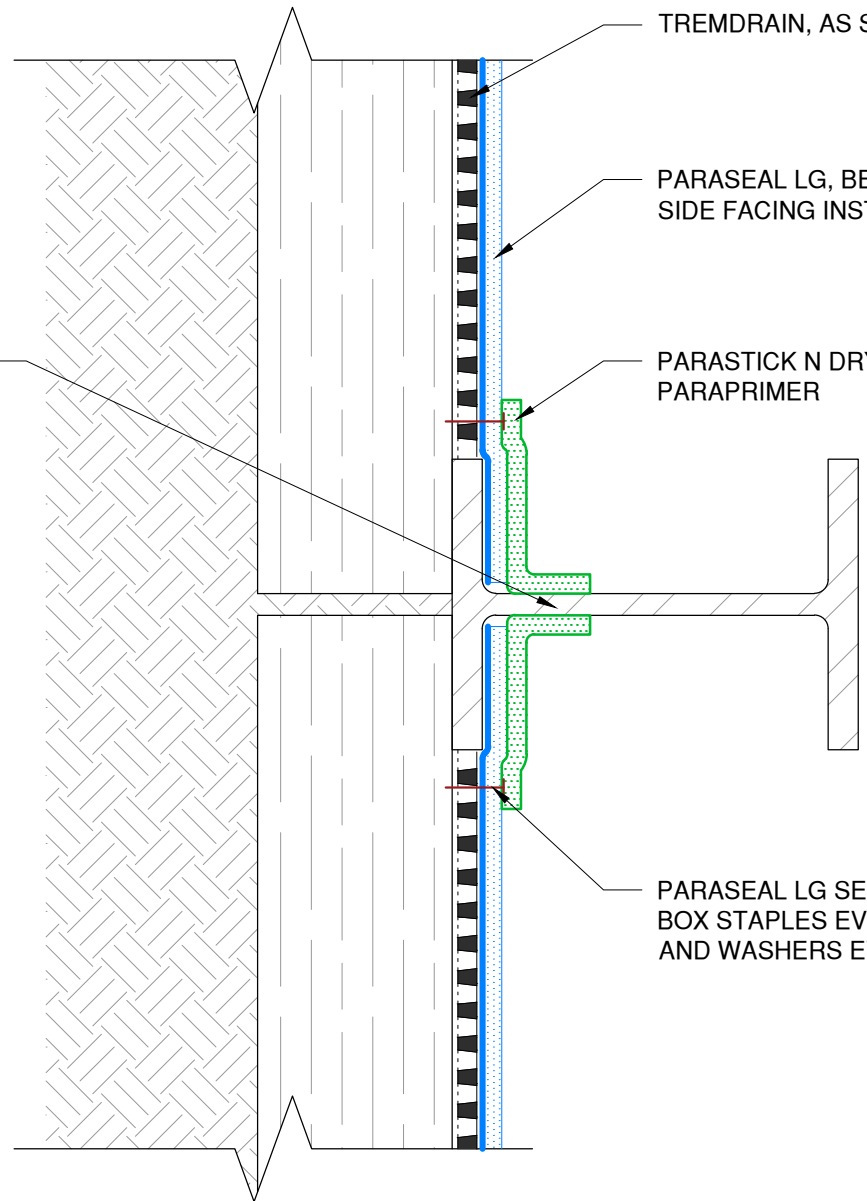


GRIND INSIDE FACE OF BEAM WEB USING WIRE WHEEL OR WIRE BRUSH SO THAT THE METAL IS 'BRIGHT WHITE' THEN APPLY PARAPRIMER OVER BEAM



TREMDRAIN, AS SPECIFIED

PARASEAL LG, BENTONITE SIDE FACING INSTALLER

PARASTICK N DRY ADHERED WITH PARAPRIMER

PARASEAL LG SECURED WITH WIDE CROWN BOX STAPLES EVERY 3" O.C. AND WITH NAILS AND WASHERS EVERY 24" O.C.

NOTES: PARASEAL PRODUCTS REQUIRE A MIN 24 PSF OF COMPACTION/CONFINEMENT IN ORDER TO FUNCTION AS DESIGNED.  
NOT RECOMMENDED FOR USE IN SUBMERGED CONDITIONS.

*The architecture, engineering, and design of the project using the Tremco products are the responsibility of the project's design professional. All products and systems must comply with local building codes and standards. This detail is for general information and guidance only and Tremco specifically disclaims any liability for the use of this detail. The project design professional determines, in its sole discretion, whether this detail or a functionally equivalent detail is best suited for the project. This detail is subject to change without notice. Contact Tremco to ensure you have the most recent version.*

**Paraseal LG Blind Side Walls**



Detail: Paraseal LG at Back Lagged Soldier Pile - Plan View				File Name:
Drawn by: KAB	Checked by: SP/WH	Scale: NTS	Date: 3/4/2022	BSW-LG-LW-03
<a href="http://www.tremcocpg.com">www.tremcocpg.com</a>				

