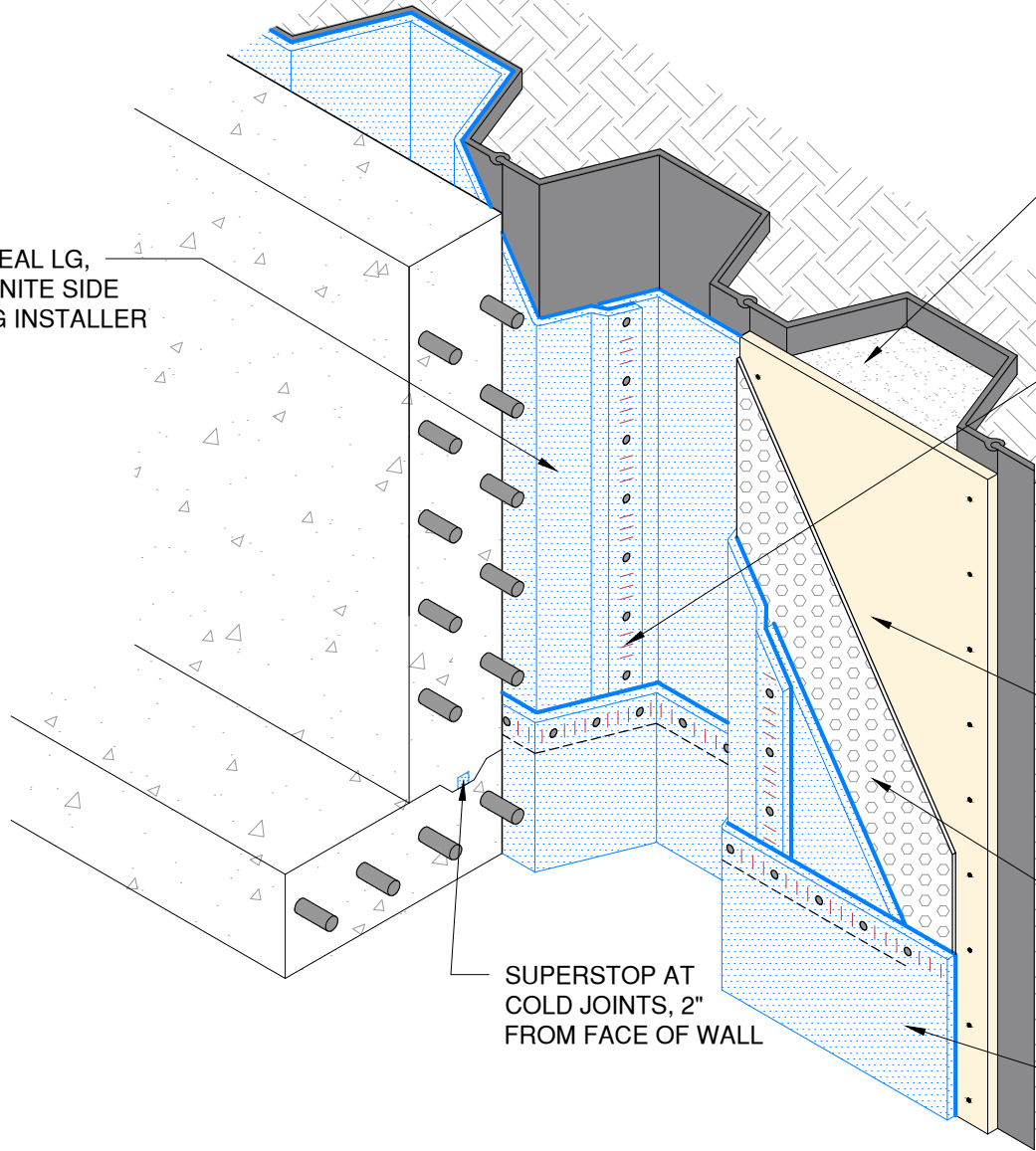


PARASEAL LG,
BENTONITE SIDE
FACING INSTALLER



OPTIONAL TECHNIQUE: BACKFILL
TREATED PLYWOOD WITH SAND, PEA
GRAVEL, OR CEMENT SLURRY (REFER
TO APPLICATION INSTRUCTIONS)

SEAMS OVERLAPPED 4" MIN. AND
SECURED WITH WIDE CROWN BOX
STAPLES EVERY 3" O.C. AND WITH
NAILS AND WASHERS EVERY 24" O.C.
(SEE SEAM DETAILS)

WHEN VERTICAL SEAMS OCCUR AT
ANGLED RETURN OF SHEET PILING AS
SHOWN, THE OPEN EDGE OF SEAMS
SHOULD AIM AWAY FROM THE BUILDING

OPTIONAL TECHNIQUE: $\frac{3}{4}$ " MIN. TREATED
PLYWOOD ANCHORED EVERY 12" O.C.
(REFER TO APPLICATION INSTRUCTIONS)

TREMDRAIN, AS SPECIFIED

PARASEAL LG STARTER STRIP
TO EXTEND 6" MIN. BELOW TOP
OF FOOTING

SUPERSTOP AT
COLD JOINTS, 2"
FROM FACE OF WALL

NOTES: PARASEAL PRODUCTS REQUIRE A MIN 24 PSF OF
COMPACTION/CONFINEMENT IN ORDER TO FUNCTION AS DESIGNED.

NOT RECOMMENDED FOR USE IN SUBMERGED CONDITIONS.

The architecture, engineering, and design of the project using the Tremco products are the responsibility of the project's design professional. All products and systems must comply with local building codes and standards. This detail is for general information and guidance only and Tremco specifically disclaims any liability for the use of this detail. The project design professional determines, in its sole discretion, whether this detail or a functionally equivalent detail is best suited for the project. This detail is subject to change without notice. Contact Tremco to ensure you have the most recent version.

Paraseal LG Blind Side Walls



Detail: Paraseal LG over Sheet Piling

File Name:

BSW-LG-G-02



Drawn by: KAB

Checked by: SP/WH

Scale: NTS

Date: 3/4/2022

Tremco Technical Support: 866-209-2404

www.tremcocpg.com

Construction Products Group