

**NOTE:**  
 PARASEAL PRODUCTS REQUIRE A MIN 24 PSF OF  
 COMPACTION/CONFINEMENT IN ORDER TO FUNCTION AS DESIGNED

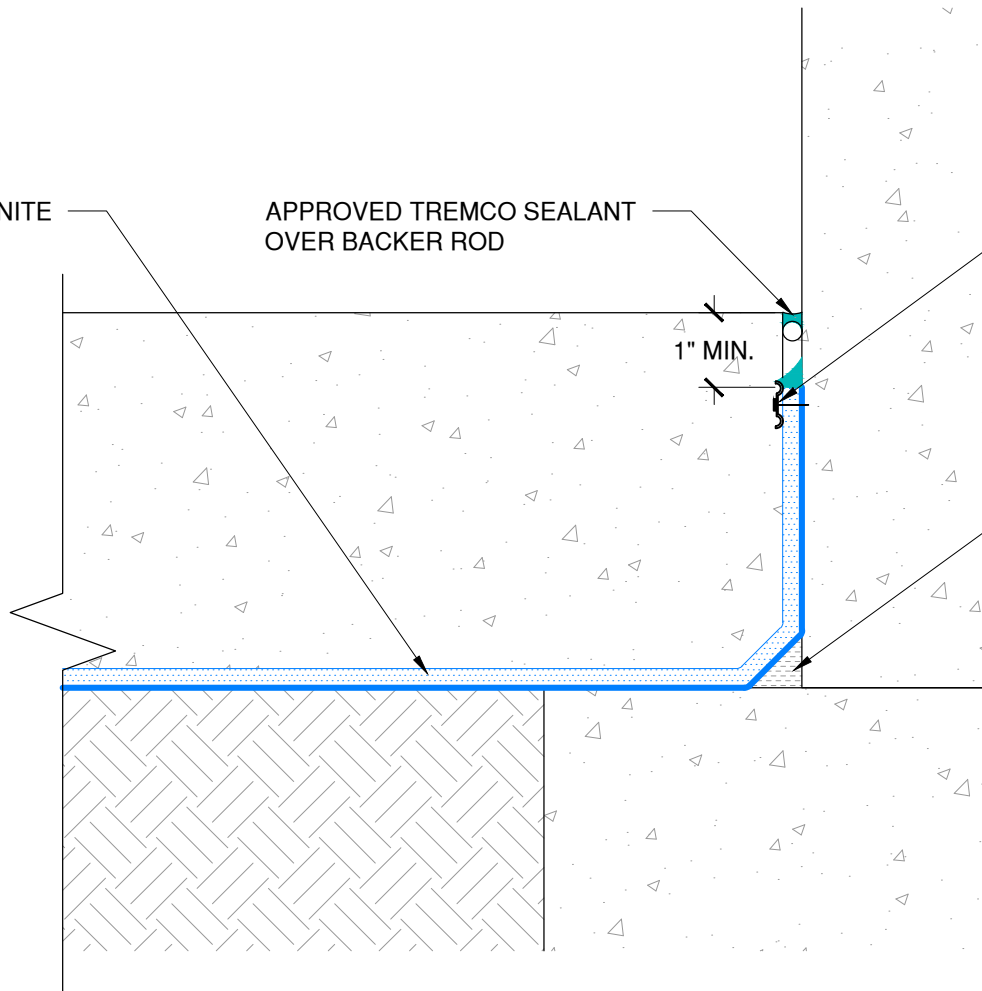
PARASEAL GM/LG, BENTONITE  
 SIDE FACING UP

APPROVED TREMCO SEALANT  
 OVER BACKER ROD

PARATERM BAR WITH  
 DYMONIC 100, NAILED  
 EVERY 8" O.C.

1" MIN.

2" PARAGRANULAR CANT



The architecture, engineering, and design of the project using the Tremco products are the responsibility of the project's design professional. All products and systems must comply with local building codes and standards. This detail is for general information and guidance only and Tremco specifically disclaims any liability for the use of this detail. The project design professional determines, in its sole discretion, whether this detail or a functionally equivalent detail is best suited for the project. This detail is subject to change without notice. Contact Tremco to ensure you have the most recent version.

**Paraseal GM/LG 20 Mil Below Slab on Grade - HDPE Side Down**



Detail: Paraseal GM/LG 20 Mil Below Slab on Grade Termination at Interior Wall Face

File Name:

BSOG-GM20-G-03



Drawn by: HDE

Checked by: WH

Scale: NTS

Date: 6/9/2022

Tremco Technical Support: 866-209-2404

[www.tremcocpg.com](http://www.tremcocpg.com)