

NOTE:
 PARASEAL PRODUCTS REQUIRE A MIN 24 PSF OF
 COMPACTION/CONFINEMENT IN ORDER TO FUNCTION AS DESIGNED

PARASTICK N DRY OVER
 STAPLED SEAMS

PARA JT TAPE

WASHER HEADED NAIL

COMPACTED GRANULAR BASE OR SOIL,
 COMPACTED TO 85% MIN. MODIFIED PROCTOR

PARASEAL GM/LG; BENTONITE SIDE
 FACING UP

6"

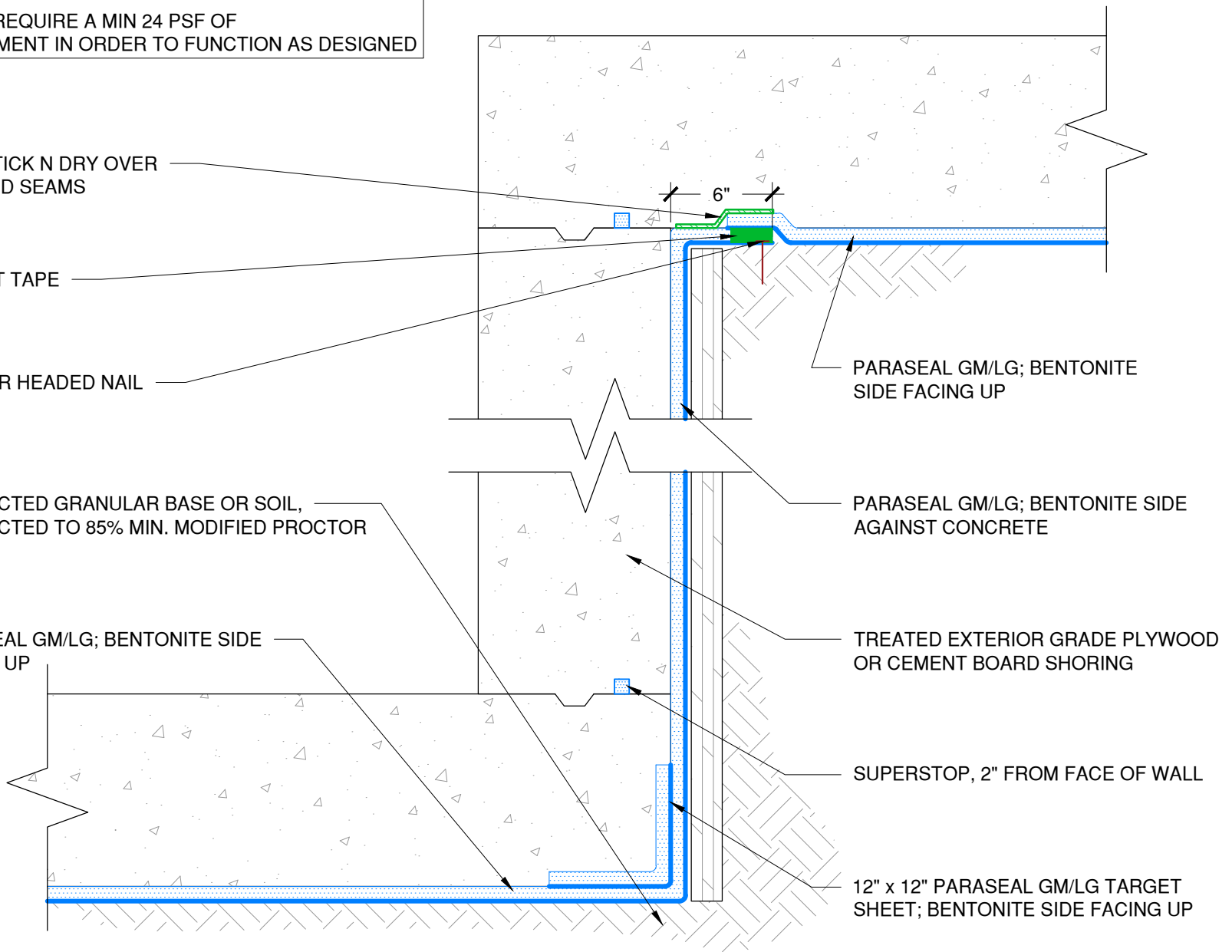
PARASEAL GM/LG; BENTONITE
 SIDE FACING UP

PARASEAL GM/LG; BENTONITE SIDE
 AGAINST CONCRETE

TREATED EXTERIOR GRADE PLYWOOD
 OR CEMENT BOARD SHORING

SUPERSTOP, 2" FROM FACE OF WALL

12" x 12" PARASEAL GM/LG TARGET
 SHEET; BENTONITE SIDE FACING UP



The architecture, engineering, and design of the project using the Tremco products are the responsibility of the project's design professional. All products and systems must comply with local building codes and standards. This detail is for general information and guidance only and Tremco specifically disclaims any liability for the use of this detail. The project design professional determines, in its sole discretion, whether this detail or a functionally equivalent detail is best suited for the project. This detail is subject to change without notice. Contact Tremco to ensure you have the most recent version.

Paraseal GM/LG 20 Mil Below Slab on Grade - HDPE Side Down



Tremco Technical Support: 866-209-2404

Detail: Paraseal GM/LG 20 Mil Below Slab on Grade at Elevator, Sump or Pit with Shoring

Drawn by: HDE

Checked by: WH

Scale: NTS

Date: 6/9/2022

File Name:

BSOG-GM20-G-02



Construction Products Group

www.tremcocpg.com