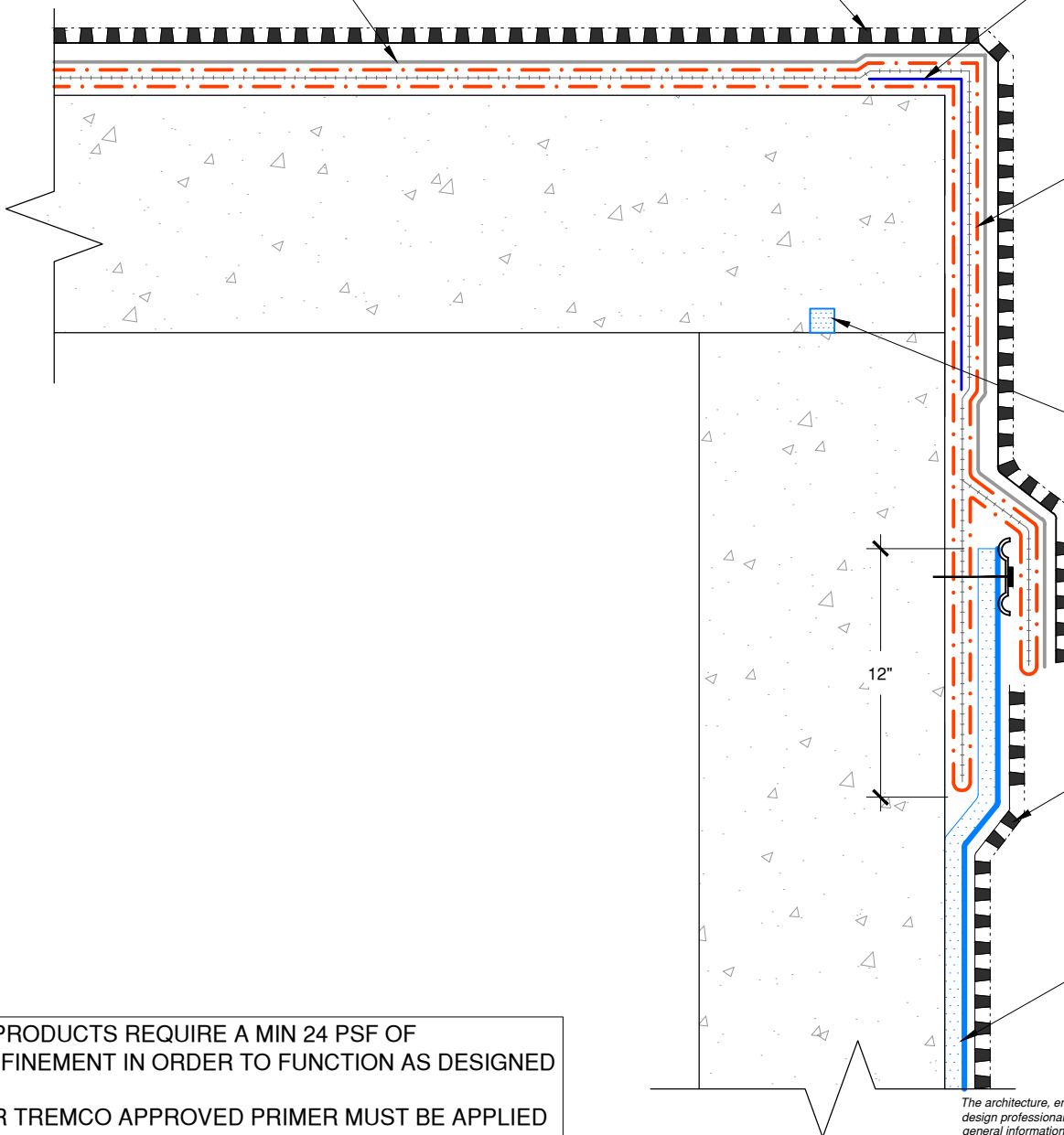


TREMCO PROTECTION COURSE

TREMDRAIN, AS SPECIFIED

ELASTOMERIC SHEETING EMBEDDED IN TREMPROOF 6100



TREMPROOF 6100 WITH EMBEDDED REINFORCING FABRIC AS SPECIFIED

SUPERSTOP WATERSTOP

TREMDRAIN, AS SPECIFIED

APPROVED PARASEAL PRODUCT

NOTE: PARASEAL PRODUCTS REQUIRE A MIN 24 PSF OF COMPACTION/CONFINEMENT IN ORDER TO FUNCTION AS DESIGNED

TREMPRIME QD OR TREMCO APPROVED PRIMER MUST BE APPLIED BEFORE THE APPLICATION OF TREMPROOF 6100

The architecture, engineering, and design of the project using the Tremco products are the responsibility of the project's design professional. All products and systems must comply with local building codes and standards. This detail is for general information and guidance only and Tremco specifically disclaims any liability for the use of this detail. The project design professional determines, in its sole discretion, whether this detail or a functionally equivalent detail is best suited for the project. This detail is subject to change without notice. Contact Tremco to ensure you have the most recent version.

### Paraseal Backfilled Walls



Tremco Technical Support: 866-209-2404

Detail: TREMProof 6100 to Paraseal at Deck to Wall Transition

Drawn by: KAB

Checked by: WH

Scale: NTS

Date: 2/23/2022

File Name:

BFW-P-T-11



Construction Products Group

[www.tremcocpg.com](http://www.tremcocpg.com)