

FINISH GRADE SHOULD OCCUR  
AT OR BELOW PARASEAL

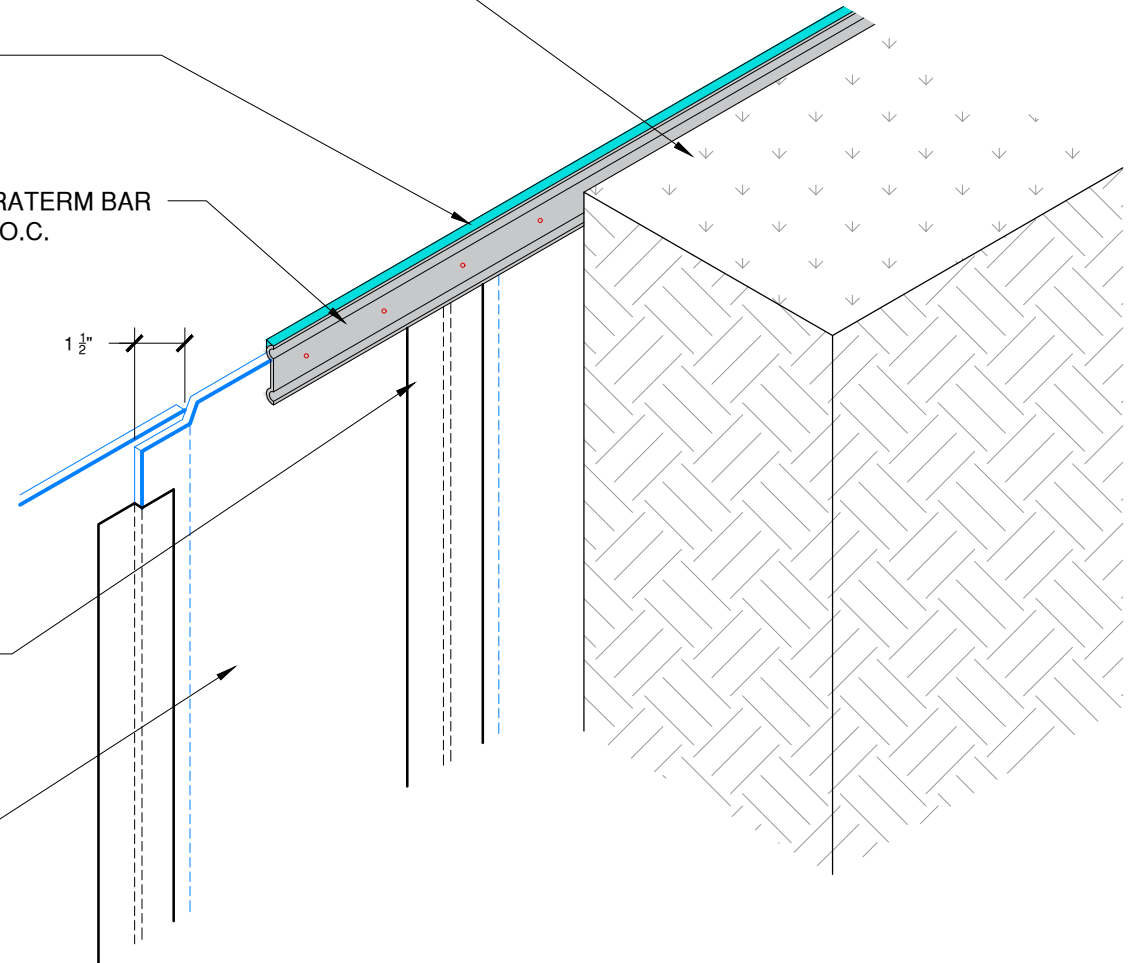
DYMONIC 100

CONTINUOUS PARATERM BAR  
NAILED EVERY 8" O.C.

1 1/2"

PERMANENT SEAM TAPE AT ALL  
VERTICAL SEAMS OR ANY SEAMS NOT  
ORIENTATED TO SHED WATER

PARASEAL MEMBRANE WITH  
HDPE SIDE FACING INSTALLER



NOTE: PARASEAL PRODUCTS REQUIRE A MIN 24 PSF OF  
COMPACTION/CONFINEMENT IN ORDER TO FUNCTION AS DESIGNED

*The architecture, engineering, and design of the project using the Tremco products are the responsibility of the project's design professional. All products and systems must comply with local building codes and standards. This detail is for general information and guidance only and Tremco specifically disclaims any liability for the use of this detail. The project design professional determines, in its sole discretion, whether this detail or a functionally equivalent detail is best suited for the project. This detail is subject to change without notice. Contact Tremco to ensure you have the most recent version.*

### Paraseal Backfilled Walls



Tremco Technical Support: 866-209-2404

Detail: Paraseal at Typical Grade Line Termination

Drawn by: KAB

Checked by: WH

Scale: NTS

Date: 2/23/2022

File Name:

BFW-P-G-04



Construction Products Group

[www.tremcocpg.com](http://www.tremcocpg.com)