

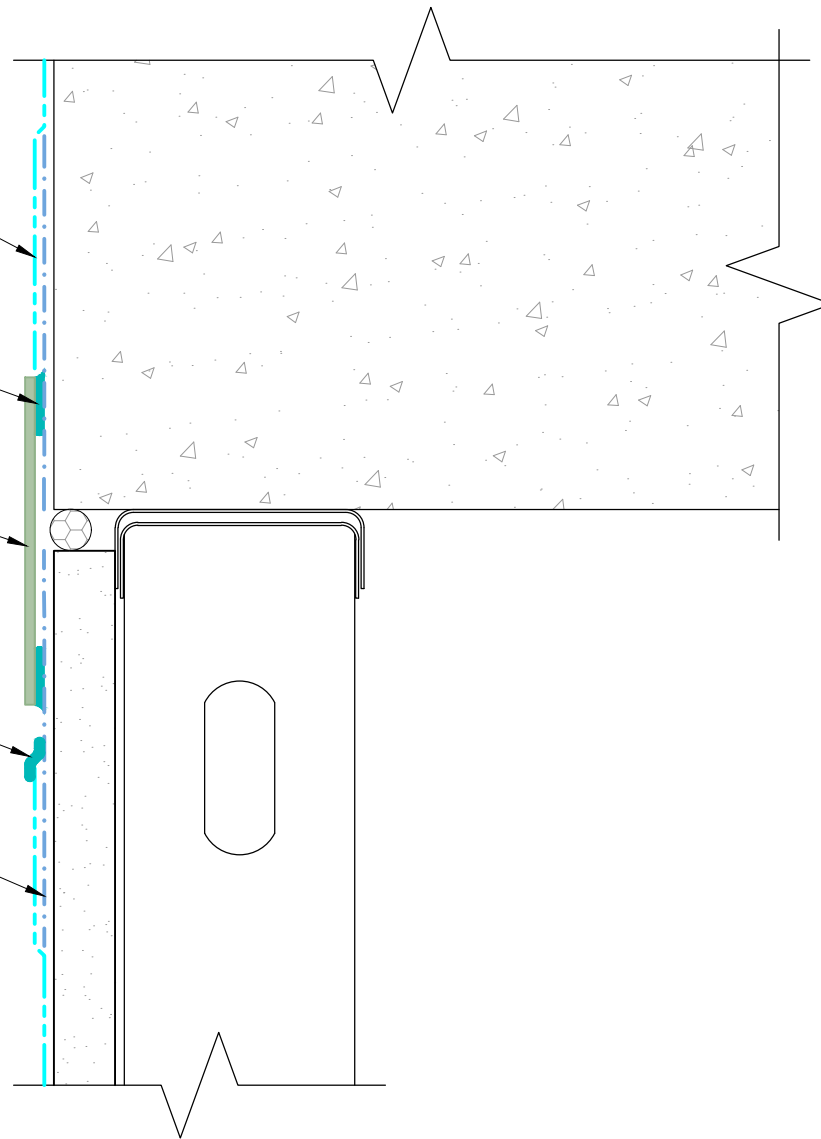
EXOAIR 210AT

SPECTREM 1

SPECTREM SIMPLE SEAL

DYMONIC 100

EXOAIR 110AT OR 110



NOTE: BUILDING FACADE AND TOP OF FLOOR SLAB NOT SHOWN FOR CLARITY

EXOAIR PRIMER MUST BE USED WITH EXOAIR 110

*The architecture, engineering, and design of the project using the Tremco products are the responsibility of the project's design professional. All products and systems must comply with local building codes and standards. This detail is for general information and guidance only and Tremco specifically disclaims any liability for the use of this detail. The project design professional determines, in its sole discretion, whether this detail or a functionally equivalent detail is best suited for the project. This detail is subject to change without notice. Contact Tremco to ensure you have the most recent version.*

**ExoAir 210AT**

Detail: Permeable Sheet - Deflection Joint - Spectrem Simple Seal

File Name:

AVB-SP-S-DJ-02

Drawn by: HDE

Checked by: CB

Scale: NTS

Date: 2/3/2022



Tremco Technical Support: 866-209-2404

[www.tremcocpg.com](http://www.tremcocpg.com)



Construction Products Group