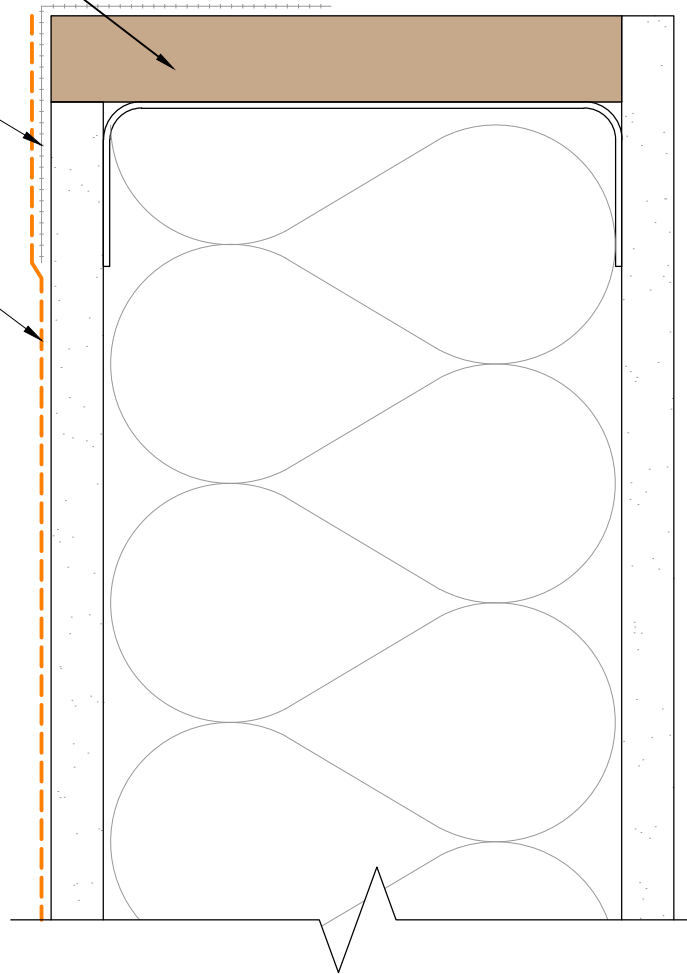


ENGINEERED FRAMING SYSTEM
BY PREBUCK LLC
OR FUNCTIONAL EQUIVALENT

EXOAIR 230 OR 230LT WITH
TREMCO 2011 MESH EMBEDDED

EXOAIR 220, 230 OR 230LT



NOTES: WINDOW AND BUILDING FACADE NOT SHOWN FOR CLARITY

The architecture, engineering, and design of the project using the Tremco products are the responsibility of the project's design professional. All products and systems must comply with local building codes and standards. This detail is for general information and guidance only and Tremco specifically disclaims any liability for the use of this detail. The project design professional determines, in its sole discretion, whether this detail or a functionally equivalent detail is best suited for the project. This detail is subject to change without notice. Contact Tremco to ensure you have the most recent version.

ExoAir 220/230



Detail: Sill - Impermeable Fluid - Fluid Flashing

File Name:

Drawn by: KAB

Checked by: CB

Scale: NTS

Date: 2/17/2022

AVB-SP-F-S-02



Construction Products Group

Tremco Technical Support: 866-209-2404

www.tremcocpg.com