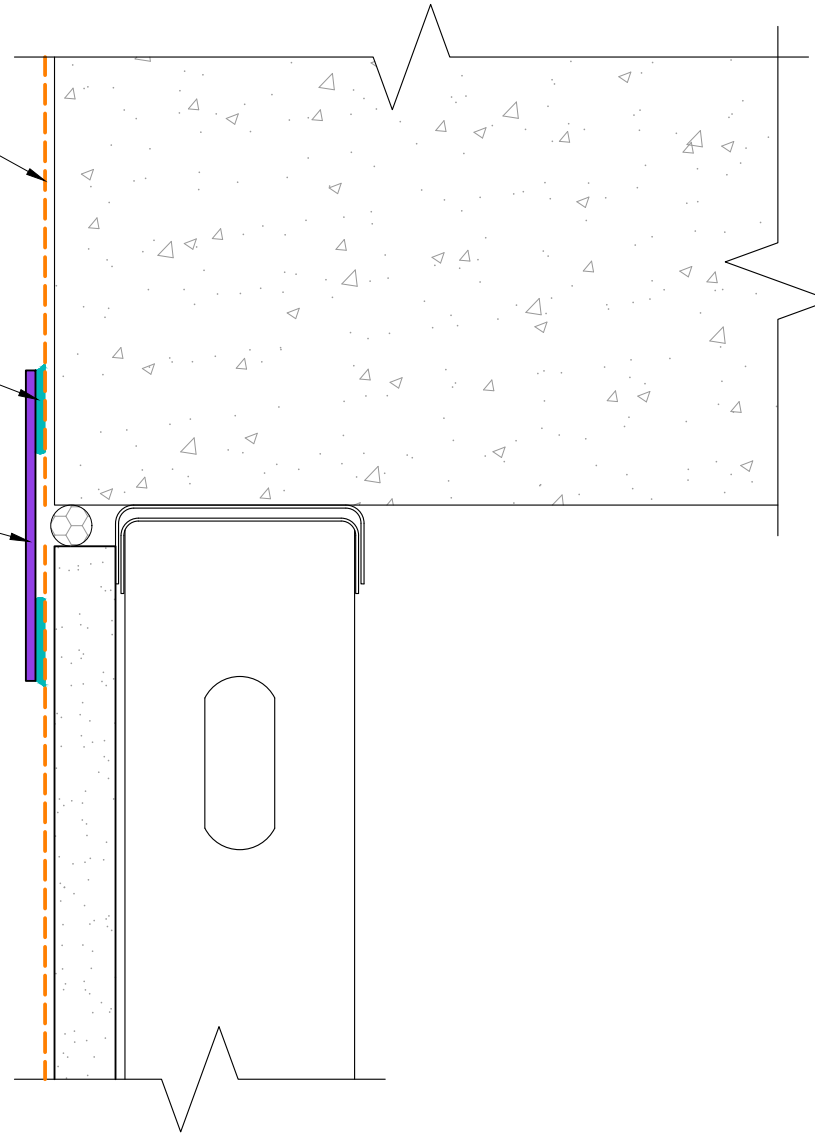


EXOAIR 220, 230 OR 230LT

SPECTREM 1
MINIMUM 1"

PROGLAZE ETA



NOTES: BUILDING FACADE AND TOP OF FLOOR SLAB NOT SHOWN FOR CLARITY

EXOAIR PRIMER MUST BE USED WITH EXOAIR 110

The architecture, engineering, and design of the project using the Tremco products are the responsibility of the project's design professional. All products and systems must comply with local building codes and standards. This detail is for general information and guidance only and Tremco specifically disclaims any liability for the use of this detail. The project design professional determines, in its sole discretion, whether this detail or a functionally equivalent detail is best suited for the project. This detail is subject to change without notice. Contact Tremco to ensure you have the most recent version.

ExoAir 220/230



Detail: Permeable Fluid - Deflection Joint - Proglaze ETA

File Name:

Drawn by: KAB

Checked by: CB

Scale: NTS

Date: 4/19/2023

AVB-SP-F-DJ-02



Construction Products Group

Tremco Technical Support: 866-209-2404

www.tremcocpg.com