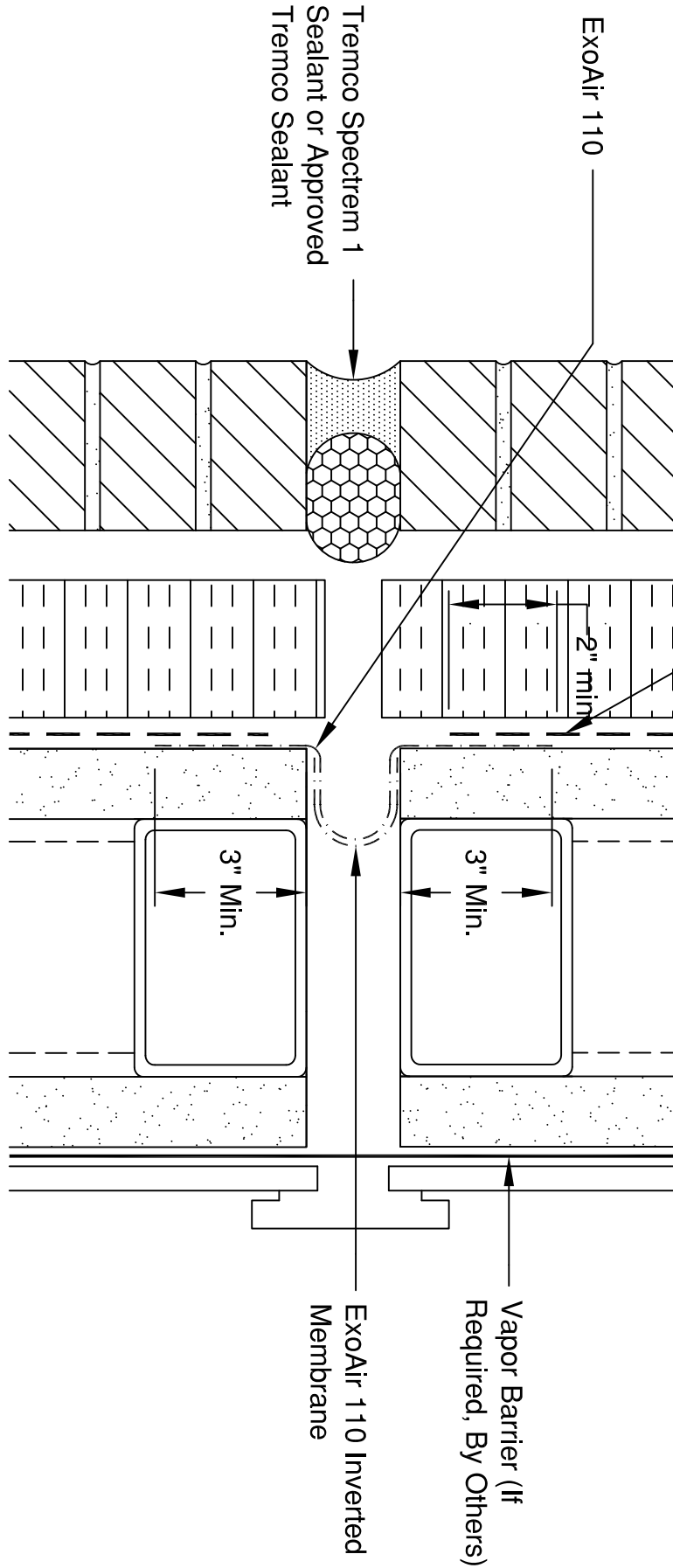


ExoAir 220/230  
 Apply ExoAir Primer to  
 surface of ExoAir 110  
 prior to applying  
 membrane. The membrane should  
 overlap the ExoAir 110 by a min of 2"



Note: This sample detail is for educational purposes only. Appropriate air barrier details vary by geographic location, climatic conditions, air barrier products used in actual design, and anticipated building use. Contact Tremco Technical Services for further assistance.



3735 Green Road \* Beachwood, OH 44122  
 Phone : 866-209-2404 \* Fax: 216-766-5535

Detail  
**Expansion Joint  
 Method 1 - Permeable**

Drawn by: K. Thorpe

Scale: None

Drawing Number  
**A10253**

Date: 08/20/10