

ExoAir 220/230
 Apply ExoAir Primer to
 surface of the ExoAir 110
 prior to applying the
 membrane

ExoAir Termination Mastic

ExoAir TWF, Recessed
 0.5" from Exterior

Metal Drip Edge
 (required)

Spectrem 1 Sealant

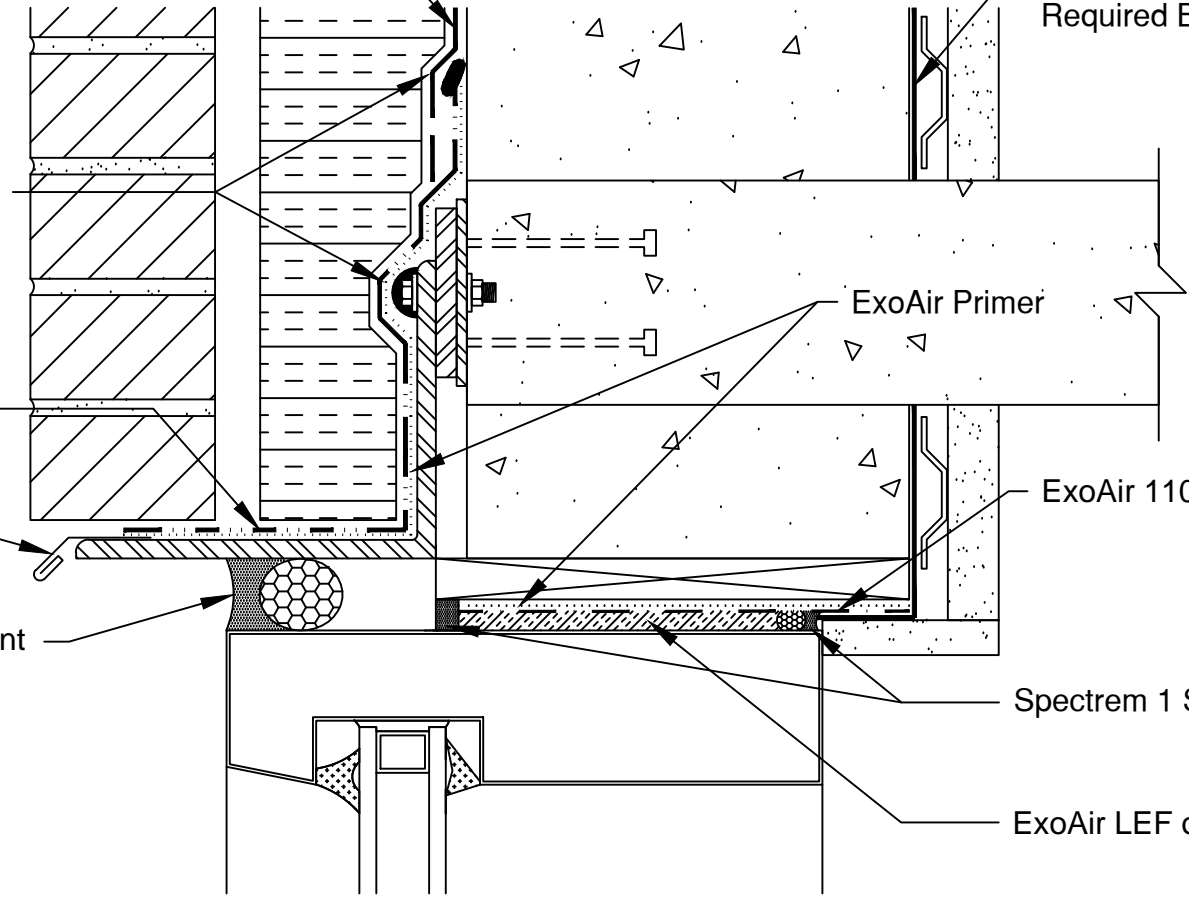
Vapor Barrier (As
 Required By Others)

ExoAir Primer

ExoAir 110

Spectrem 1 Sealant

ExoAir LEF or Flex Foam



Note: This sample detail is for educational purposes only. Appropriate air barrier details vary by geographic location, climatic conditions, air barrier products used in actual design, and anticipated building use. Contact Tremco Technical Services for further assistance.

Detail	Drawing Number	A10056	Date:	08/20/10
	Window Head To Floor - Concrete	Scale:	None	
	Drawn by:	K. Thorpe		
<p>3755 Green Road * Beachwood, OH 44122 Phone : 866-209-2404 * Fax: 216-766-5535</p> <p>TREMCO www.tremcoairbarriers.com</p>				