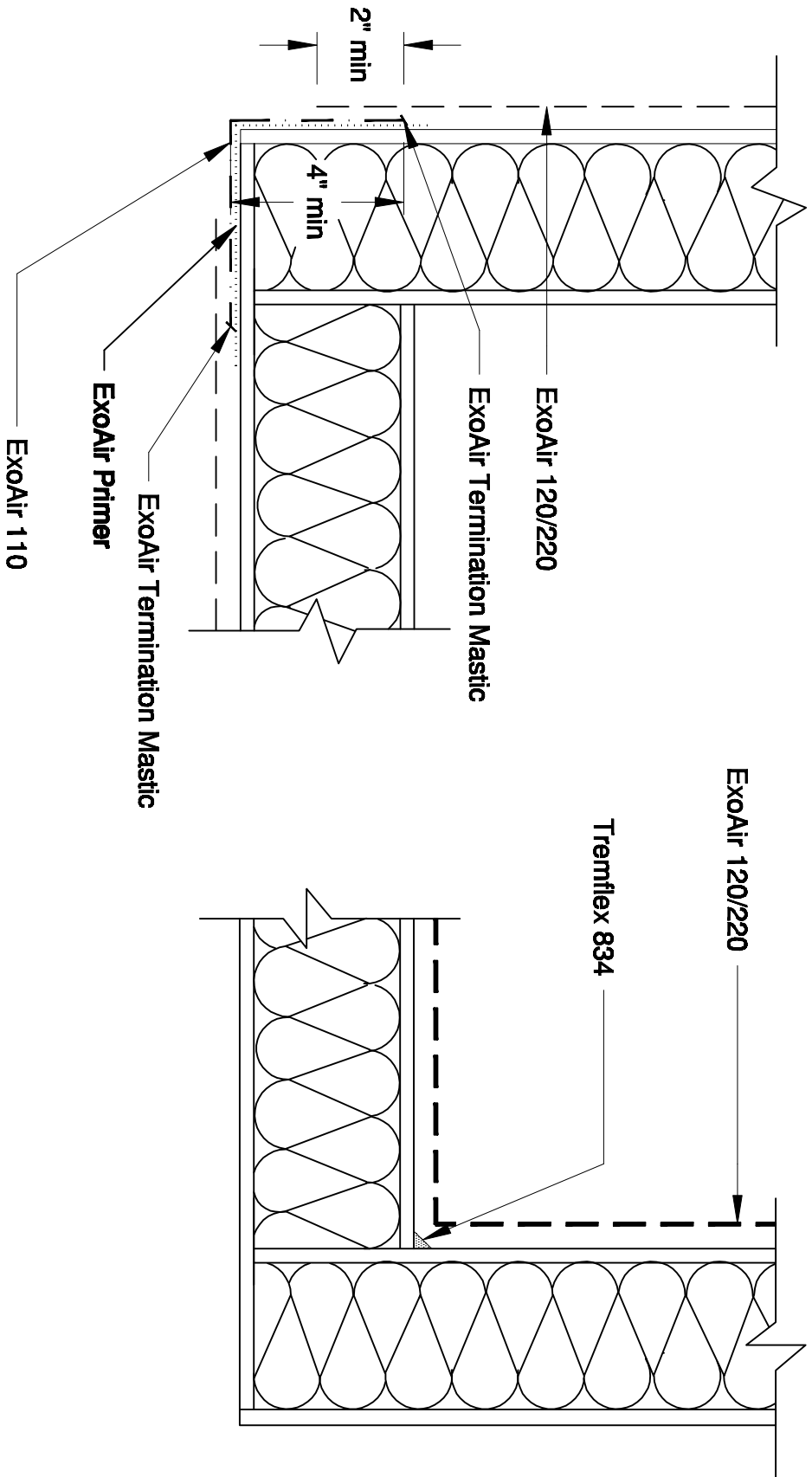


**Outside
Corner**

**Inside
Corner**



Note: This sample detail is for educational purposes only. Appropriate air barrier details vary by geographic location, climatic conditions, air barrier products used in actual design, and anticipated building use. Contact Tremco Technical Services for further assistance.



3735 Green Road * Beachwood, OH 44122
 Phone : 866-209-2404 * Fax: 216-766-5535

Detail		Drawing Number
Corners on Exterior Sheathing (Fluid)		A10053
Drawn by:	Scale:	Date:
K. Thorpe	None	11/29/10