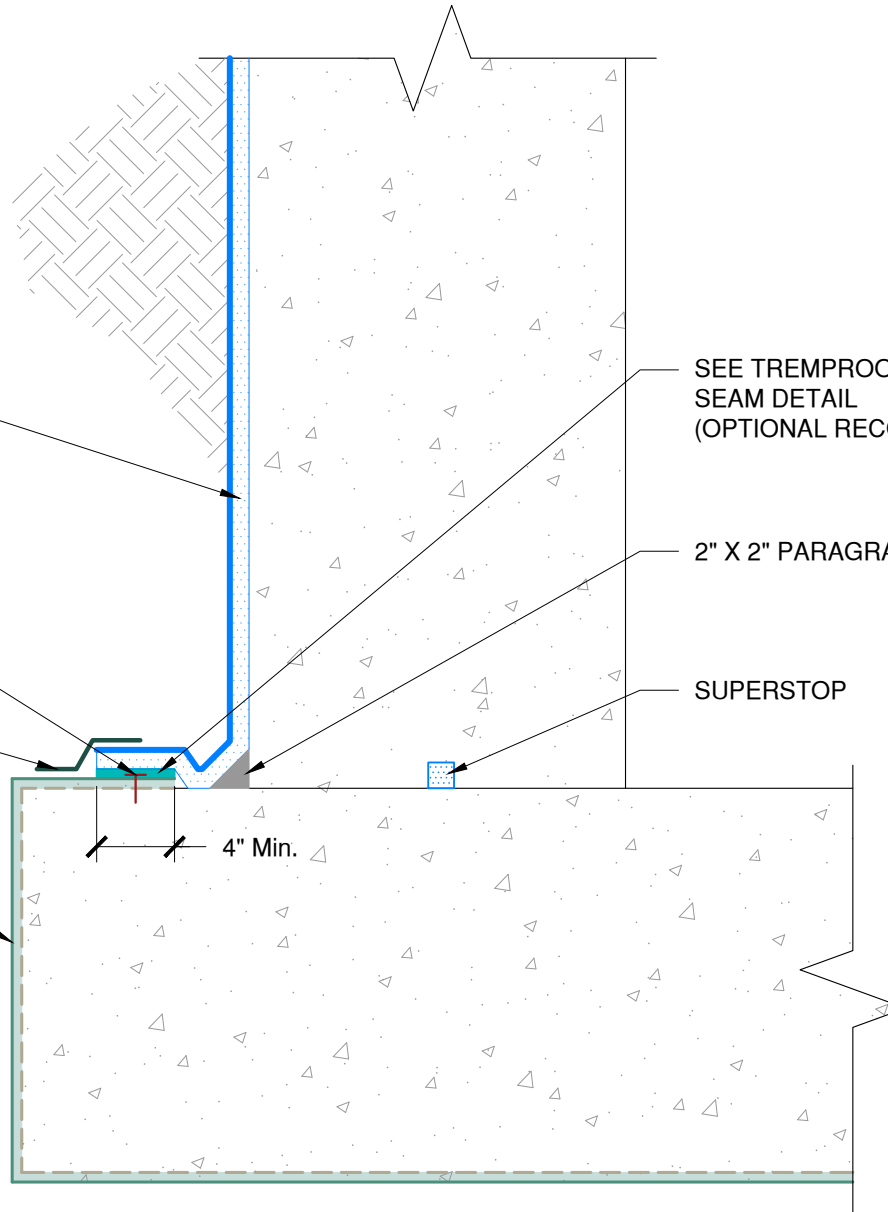


PARASEAL, BENTONITE SIDE AGAINST CONCRETE

FASTEN EVERY 16" O.C.

TREMCO BG GRIP TAPE

TREMproof AMPHIBIA, FABRIC SIDE AGAINST CONCRETE



SEE TREMproof AMPHIBIA SEAM DETAIL (OPTIONAL RECOMMENDED)

2" X 2" PARAGRANULAR CANT

SUPERSTOP

4" Min.

NOTE: PARASEAL PRODUCTS REQUIRE A MIN 24 PSF OF COMPACTION/CONFINEMENT IN ORDER TO FUNCTION AS DESIGNED

The architecture, engineering, and design of the project using the Tremco products are the responsibility of the project's design professional. All products and systems must comply with local building codes and standards. This detail is for general information and guidance only and Tremco specifically disclaims any liability for the use of this detail. The project design professional determines, in its sole discretion, whether this detail or a functionally equivalent detail is best suited for the project. This detail is subject to change without notice. Contact Tremco to ensure you have the most recent version.

TREMproof Amphibia Below Slab on Grade



Tremco Technical Support: 866-209-2404

Detail: TREMproof Amphibia Below Slab on Grade to Backfilled Transition with Paraseal at Footer

Drawn by: KAB

Checked by: WH

Scale: NTS

Date: 2/7/2023

File Name:

A-BSOG-T-07



Construction Products Group

www.tremcocpg.com