

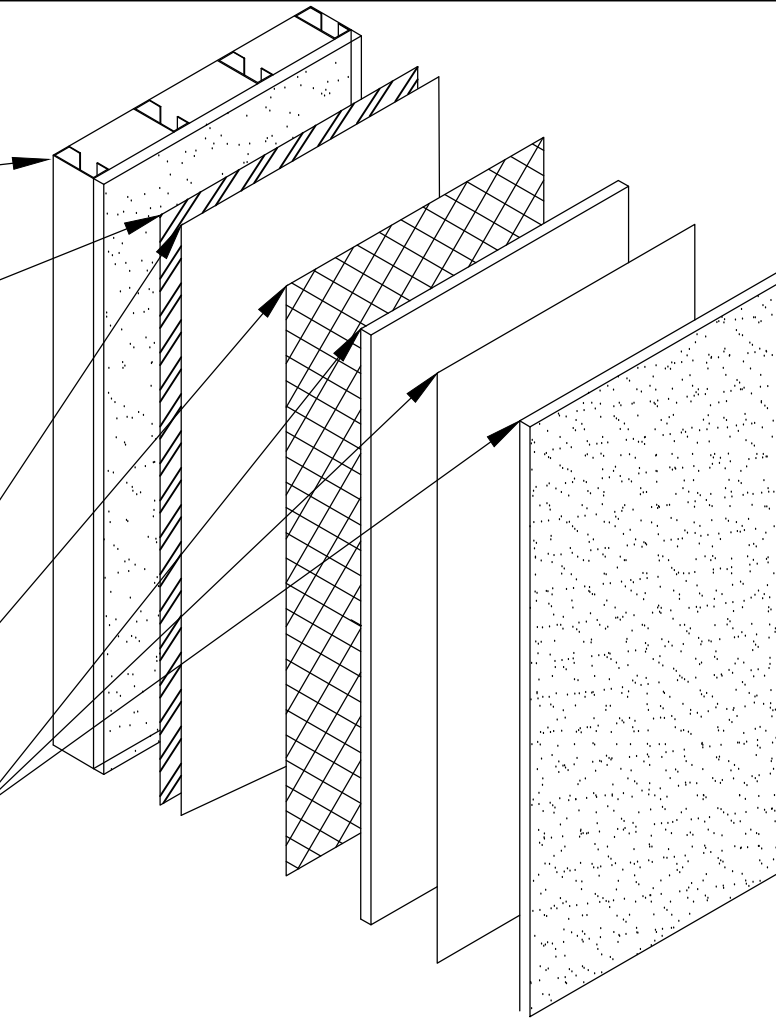
Steel Stud/ Exterior Sheathing
Backup Wall

ExoAir 110/110LT/111

Grade D Building paper

Mechanically Fastened
Metal Lath

Stucco Coating (2 or 3
coats pending
Manufacturer)



Rev #
00

File Name:
13544

Sheet Number:

Date: 07/21/2014

Detail: Stucco Isometric- Impermeable Sheet
(Exterior Sheathing)

Scale: None

Checked by: SM

Drawn by: KAB

This detail is intended for conceptual purposes only. Detail must be reviewed by a project/design professional.
See www.tremcosealants.com for the most up-to-date product information

| Rev | Date | Description | By |
|-----|------|-------------|----|
| - | - | - | - |

TREMCO
www.tremcosealants.com

3735 Green Road • Beachwood, OH 44122
Phone : 866-209-2404 • Fax : 216-766-5535