

ExoAir 110/110LT/111

Dymonic 100 or
ExoAir Termination
Mastic

ExoAir TWF, recessed
 $\frac{1}{2}$ " from exterior

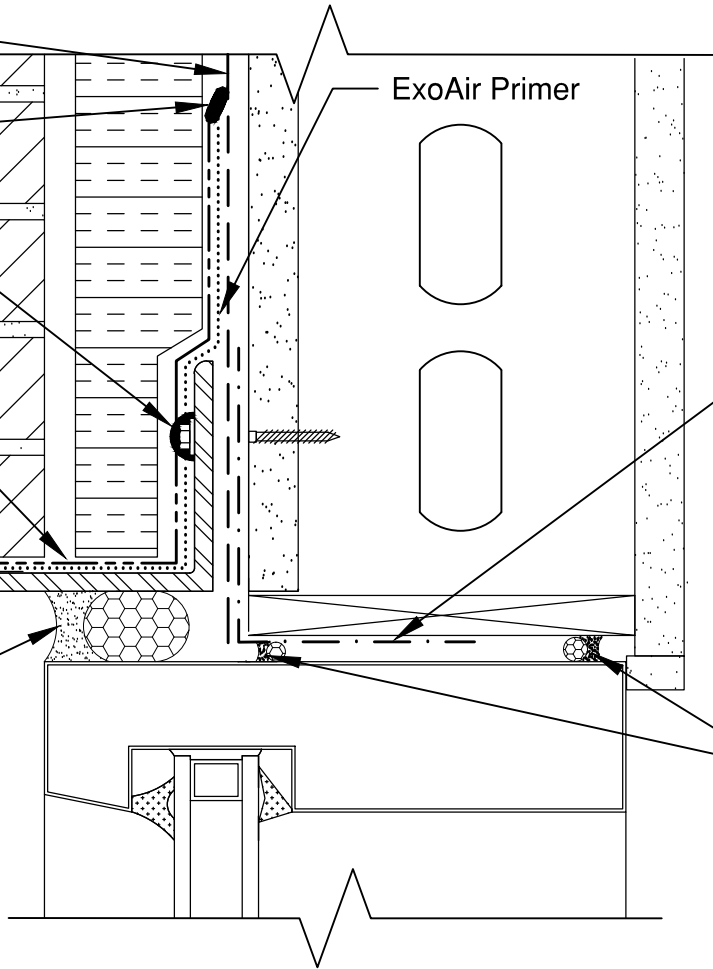
Metal Drip Edge

Spectrem 1

ExoAir Primer

ExoAir 110/110LT/111

Spectrem 1



This detail is intended for conceptual purposes only. Detail must be reviewed by a project/design professional.
See www.tremcosealants.com for the most up-to-date product information

Rev	Date	Description	By
-	-	-	-

Rev #
00

File Name:
13535

Sheet Number:
Date: 6/10/2014

Detail: Brick Lintel - Impermeable Sheet- Sheet Flashing
(Exterior Sheathing)
Scale: None
Checked by: SDM
Drawn by: KAB

TREMCO
www.tremcosealants.com

3735 Green Road • Beachwood, OH 44122
Phone : 866-209-2404 • Fax: 216-766-5535