

ExoAir 110/110LT/111

Dymonic 100 or
ExoAir Termination
Mastic

ExoAir TWF, recessed
 $\frac{1}{2}$ " from exterior

Metal Drip Edge

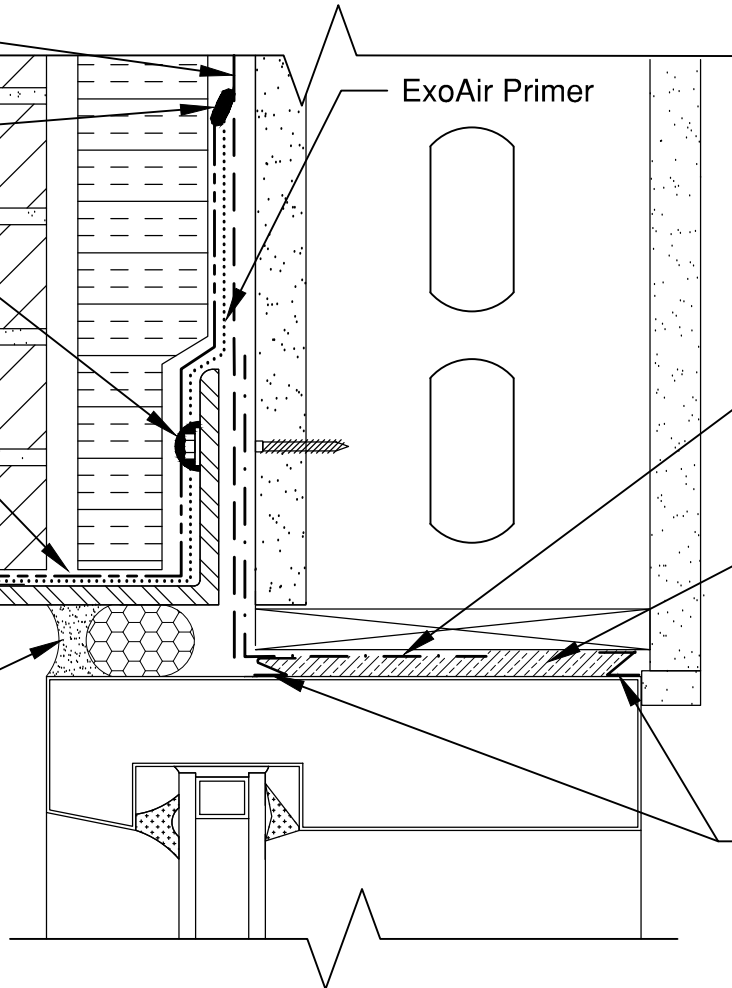
Spectrem 1

ExoAir Primer

ExoAir 230 with
Tremco 2011 mesh

ExoAir LEF or
Flex Foam

ExoAir Duo



This detail is intended for conceptual purposes only. Detail must be reviewed by a project/design professional.
See www.tremcosealants.com for the most up-to-date product information

Rev	Date	Description	By
-	-	-	-



www.tremcosealants.com
3735 Green Road • Beachwood, OH 44122
Phone : 866-209-2404 • Fax : 216-766-5535