

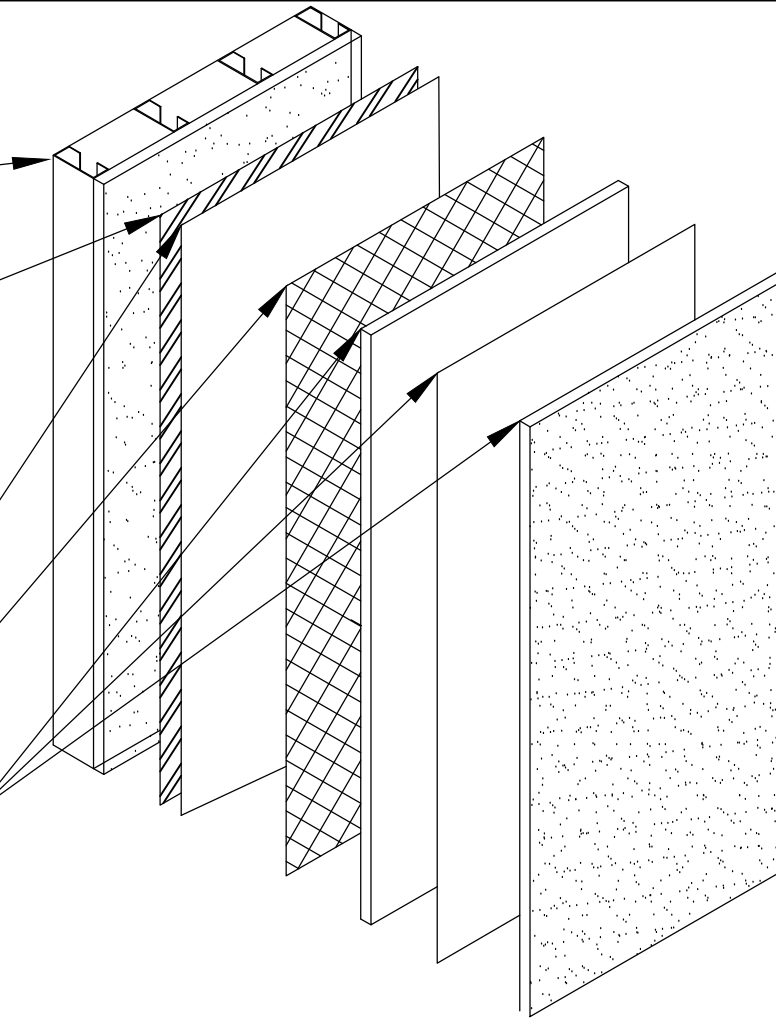
Steel Stud/ Exterior Sheathing  
Backup Wall

ExoAir 120

Grade D Building paper

Mechanically Fastened  
Metal Lath

Stucco Coating (2 or 3  
coats pending  
Manufacturer)



Rev #  
00

File Name:  
13506

Sheet Number:

Date: 07/21/2014

Detail: Stucco Isometric- Impermeable Fluid  
(Exterior Sheathing)

Scale: None

Checked by: SM

Drawn by: KAB

This detail is intended for conceptual purposes only. Detail must be reviewed by a project/design professional.  
See [www.tremcosealants.com](http://www.tremcosealants.com) for the most up-to-date product information

Rev	Date	Description	By
-	-	-	-

**TREMCO**  
[www.tremcosealants.com](http://www.tremcosealants.com)

3735 Green Road • Beachwood, OH 44122  
Phone : 866-209-2404 • Fax : 216-766-5535