

ExoAir 220/230

Spectrem 1

ExoAir 110/110LT/111/230

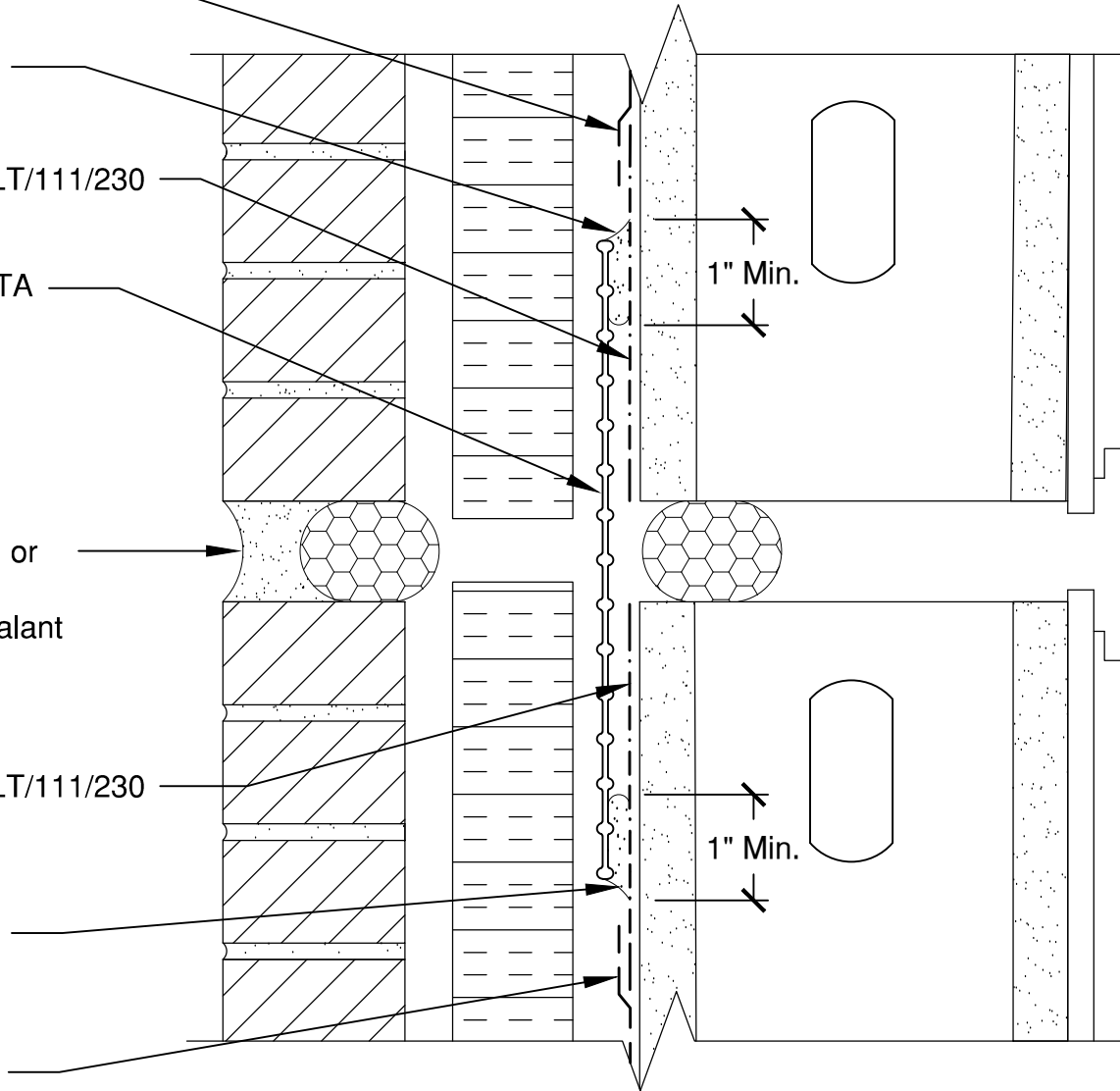
Proglaze ETA  
Connection  
(Pending  
anticipated  
movement)

Spectrem 1 or  
Approved  
Tremco Sealant

ExoAir 110/110LT/111/230

Spectrem 1

ExoAir 220/230



This detail is intended for conceptual purposes only. Detail must be reviewed by a project/design professional.  
See [www.tremcosealants.com](http://www.tremcosealants.com) for the most up-to-date product information

Rev	Date	Description	By
-	-	-	-

Rev #  
00

File Name:  
13467

Sheet Number:

Date: 07/21/2014

Detail: Joint Detail- IPermeable Fluid- Proglaze ETA  
(Exterior Sheathing)  
Drawn by: KAB Checked by: S.Mort Scale: None

**TREMCO**  
[www.tremcosealants.com](http://www.tremcosealants.com)

3735 Green Road • Beachwood, OH 44122  
Phone : 866-209-2404 • Fax : 216-766-5535