



FWFO.EWS0011 Exterior Wall Systems

[Page Bottom](#)

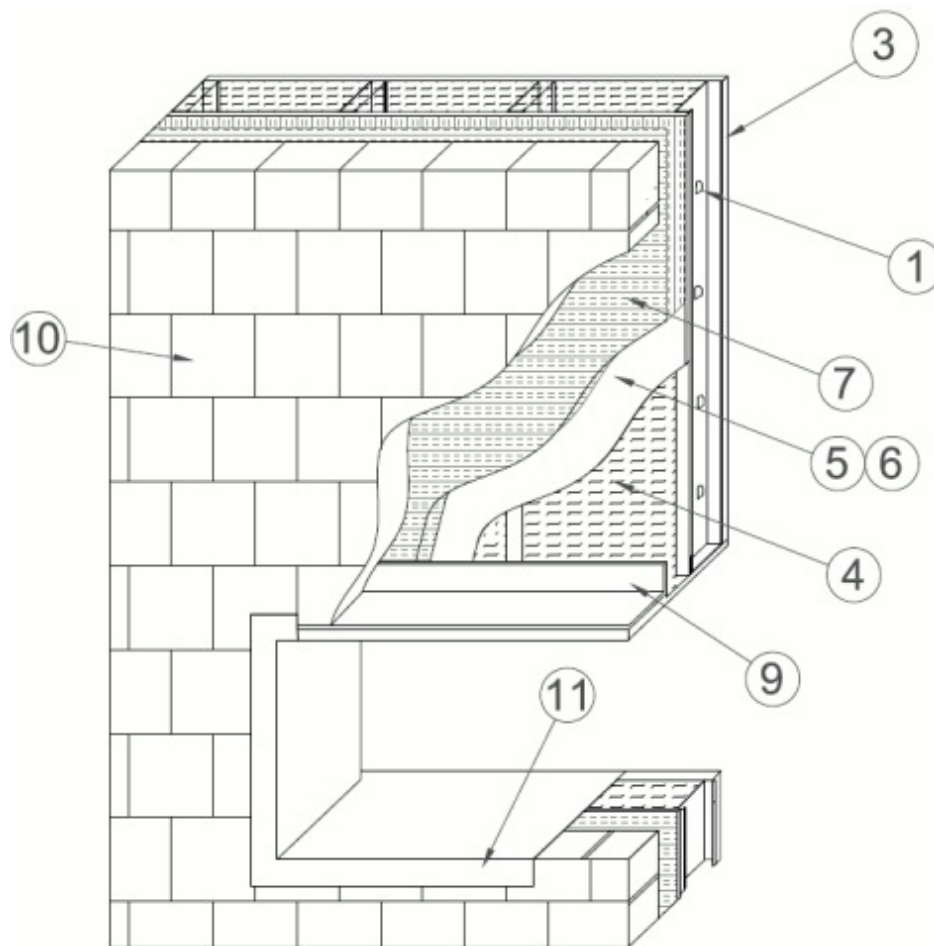
FWFO - Exterior Wall Systems

[See General Information for Exterior Wall Systems](#)

System No. EWS0011

August 25, 2014

Exterior Wall System



1. **Steel Studs** — Min 3-5/8 in. (92 mm) deep, formed of min 25 ga. galv steel spaced max 24 in. (610 mm) OC. Additional studs to be used to completely frame window/door openings.

1A. **Alternate Base Walls (not shown)** — Cast concrete walls or concrete masonry units (CMU) concrete walls may be used in lieu of Items 1 through 5.

2. **Bracing** — (Not Shown) - Nom 1-1/2 in. (38 mm) wide by 1/2 in. (13 mm) deep galvanized 16 ga. steel channel placed within depth of studs through stamped openings, fastened 48 in. o.c.

3. **Interior Gypsum Board (CKNX)*** — Min 5/8 in. (16 mm) thick, 4 ft (1.2 m) wide, attached to steel studs with 1 in. (25 mm) long, Type S steel screws spaced max 8 in. (203 mm) OC around the perimeter and max 12 in. (305 mm) OC in the field. Joints oriented horizontally or vertically and covered with paper tape and joint compound. Screw heads covered with joint compound.

See Gypsum Board (CKNX) Category for names of Classified Companies

4. **Wall Cavity insulation (BKNV)*** — Nominal 3-1/2 in. (89 mm) thick, R-13 Kraft paper faced, Class C fiberglass

insulation installed in stud cavities.

See Batts and Blankets (BKNV) Category for names of Classified Companies

5. **Exterior Gypsum Sheathing (CKNX)*** — Exterior-grade glass mat sheathing gypsum board, minimum 1/2 in. (13 mm) thick, attached to steel studs with No.6, 1-1/4 in. (32 mm) long, steel screws spaced max 8 in. (203 mm) OC around the perimeter and max 12 in. (305 mm) OC in the field. Joints oriented horizontally or vertically.

See Gypsum Board (CKNX) Category for names of Classified Companies

6. **Exterior Wall System Component - Combustible Air Barrier Sealant*** — Applied to completely cover the exterior side of the exterior gypsum sheathing at a min thickness of 35 mil (0.9 mm) dry, 70 mil (1.8 mm) wet thickness.

TREMCO INC — ExoAir 230

7. **Foam Insulation (BRYX)*** — Nom 4 by 8 ft (1.2 by 2.4 m) by 3-1/4 in. (83 mm) thick, min 3 pcf (48.1 kg/m³) expanded polystyrene insulation secured to gypsum sheathing with min 5 in. (127 mm) long self-tapping steel screws in conjunction with 2 in. (51 mm) diameter steel washers spaced 24 in. (610 mm) OC.

AFM CORP — Foam-Control EPS Type IX, Film Faced Foam-Control EPS Type IX, Foam-Control EPS Type XIV or Foam-Control EPS Type XV

8. **Mineral Wool** — (Not Shown) - Nom 4 pcf (64 kg/m³), 1 in. (25 mm) thick mineral batt insulation installed within each wall stud cavity at each floor line, held in place with standard type, steel Z clips spaced max 24 in. OC. Also secured to the underside of steel lintel (Item 9) with two rows of steel batt pins located approx. 1 in. (25 mm) from the edges and spaced a max 8 in. (203 mm) OC.

9. **Steel Lintel** — Nom 4 x 4 x 1/4 in. (102 x 102 x 6 mm) steel, free floating, spanning over top of window/door openings as needed for use with various Exterior Finishes (Item 9).

10. **Exterior Finishing** — The following items may be used as exterior finishing for the wall system:

A. **Exterior Veneer — Brick** — Nom 4 in. (102 mm) thick clay brick veneer offset to provide a max 2 in. (51 mm) air gap between exterior sheathing (Item 6) and brick veneer with standard type veneer anchors, spaced a max 24 in. (610 mm) on center.

B. **Concrete** — Min 2 in. (51 mm) thick with max 2 in. (51 mm) air gap between exterior sheathing (Item 6) and concrete.

C. **Concrete Masonry Units** — Min 2 in. (51 mm) thick with max 2 in. (51 mm) air gap between exterior sheathing (Item 6) and concrete masonry units.

D. **Stone Veneer** — Min 2 in. (51 mm) thick natural stone veneer with any standard installation technique.

E. **Terracotta Cladding** — Min 1-1/4 in. (32 mm) thick with any standard installation technique.

11. **Flashing** — Formed of 2 x 14 in. (51x 356mm)"L Shaped", min 25 ga thick steel. Formed to completely line window/door openings and overlap onto exterior surface of the wall assembly a min 2 in. (51 mm).

*** Indicates such products shall bear the UL or cUL Certification Mark for jurisdictions employing the UL or cUL Certification (such as Canada), respectively.**

Last Updated on 2014-08-25

[Questions?](#)

[Print this page](#)

[Terms of Use](#)

[Page Top](#)

© 2015 UL LLC

When the UL Leaf Mark is on the product, or when the word "Environment" is included in the UL Mark, please search the [UL Environment database](#) for additional information regarding this product's certification.

The appearance of a company's name or product in this database does not in itself assure that products so identified have been manufactured under UL's Follow-Up Service. Only those products bearing the UL Mark should be considered to be Certified and covered under UL's Follow-Up Service. Always look for the Mark on the product.

UL permits the reproduction of the material contained in the Online Certification Directory subject to the following conditions: 1. The Guide Information, Assemblies, Constructions, Designs, Systems, and/or Certifications (files) must be presented in their entirety and in a non-misleading manner, without any manipulation of the data (or drawings). 2. The statement "Reprinted from the Online Certifications Directory with permission from UL" must appear adjacent to the extracted material. In addition, the reprinted material must include a copyright notice in the following format: "© 2015 UL LLC".