

# TREMPROOF® 250GC

Single-component, rapid curing, fluid-applied elastomeric waterproofing membrane

## Product Overview

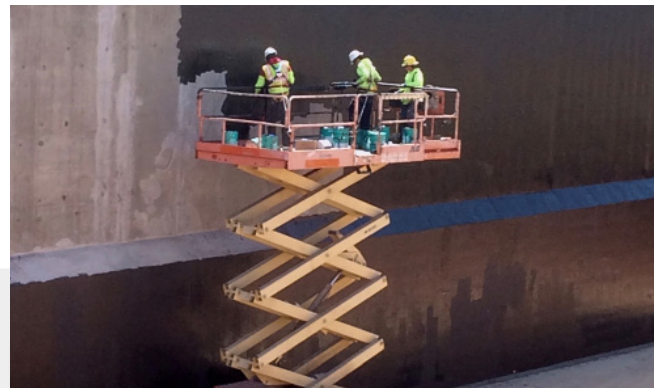
TREMPROOF® 250GC is a cold fluid-applied elastomeric modified polyurethane waterproofing membrane is rapid-curing, high solids, VOC-compliant and can be applied to damp or green concrete. It is a one-part moisture-curing elastomer available in three viscosities: self-leveling, roller and trowel (for detailing only).

TREMPROOF 250GC is designed for use on backfilled walls, split slab applications, planters and submerged conditions.



## Features & Benefits

- TREMPROOF 250GC can be applied in as little as 24 hours following the removal of concrete forms. It can also be applied to damp concrete, reducing the delays.
- The unique ability to catalyze TREMPROOF 250GC SL with water speed cure times, especially in cold temperatures and low relative humidity, to further condense the construction schedule.
- TREMPROOF 250GC can be applied at a rate of up to 120 mils in a single lift to speed application without sacrificing performance.
- It can also be applied in multiple lifts to achieve a 215-mil, high-build system when maximum protection is required.



Tremco Commercial Sealants & Waterproofing | 3735 Green Road | Beachwood, OH 44122 | US: 800.852.9068 | CAN: 800.363.3213 | tremcosealants.com

Tremco Construction Products Group (CPG) brings together Tremco Incorporated's Commercial Sealants & Waterproofing and Roofing & Building Maintenance operating divisions; Dryvit Systems, Inc.; Nudura Inc.; Willseal; Weatherproofing Technologies, Inc. and Weatherproofing Technologies Canada, Inc.

Tremco® is a registered trademark of Tremco Incorporated.  
Use of the ® symbol indicates registration with the US Patent & Trademark Office and the Canadian Intellectual Property Office.  
0920/TP250GCSS

 **TREMCO**  
Construction Products Group

tremcocpg.com