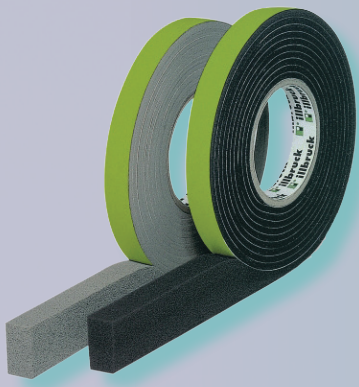




TREMCO[®]
Commercial Sealants & Waterproofing

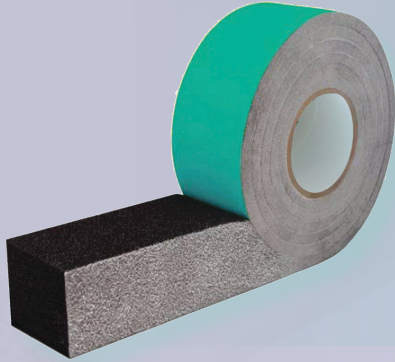
Transitions Brochure





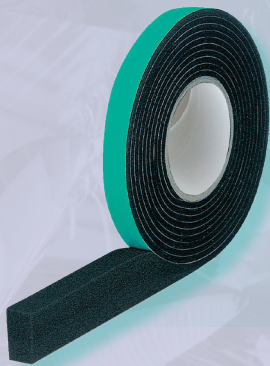
illmod® 600

- Pre-compressed, self-expanding, flexible, polyurethane joint seal that protects against wind-driven rain, sound, draft and dirt
- Exterior and interior seal impregnated with a flame-retardant, modified acrylic resin
- Pressure-sensitive adhesive on one side for easy installation
- Used in conjunction with a compatible sealant, provide a superior performing dual-sealed joint



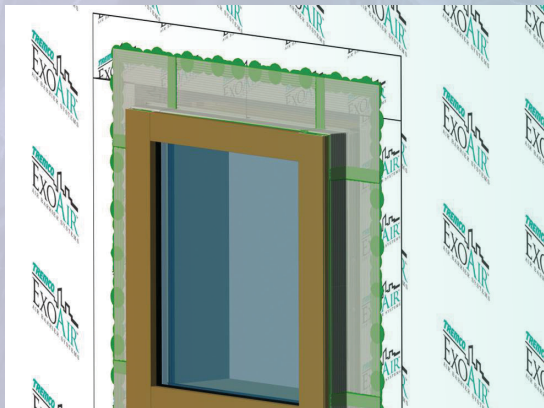
ExoAir® Trio

- Expands into rough openings, creates an airtight, thermally efficient and vapor-permeable seal
- Three-in-one solution for outer, middle and inner sealing of windows, making it ideal for rough openings in stud walls
- Installation on green and damp substrates in most weather conditions



ExoAir® Eco

- Expands into the exterior of the rough opening, creating a vapor-permeable seal
- Installation on green and damp substrates in most weather conditions



Proglaze® ETA

- A patented engineered transition assembly composed of pre-engineered, finished aluminum and silicone materials mechanically attached to window and/or wall structural framing to ensure a durable connection and seal
- Used at junctions between other assemblies within the building envelope
- Absorbs thermal movement and wind-loading stresses and withstands seismic conditions
- Compatible with most window sealants and glazing materials



EXO Air® Flex Foam

- The industry's only true flexible foam
- Single-component, moisture-curing, gun-grade polyurethane foam cures to a very fine and highly elastic foam structure
- Provides thermal insulation in demanding, high-movement joint around windows, doors and penetrations
- Absorbs up to 3 times more movement than other expandable foams
- Industry-leading movement range of +/- 15% or MAF (Movement Accommodation Factor) of 30%
- Can be installed around windows where sealant is used at window-to-air barrier connection points



EXO Air® LEF

- Single-component, moisture-curing, gun-grade polyurethane foam
- Provides thermal insulation and sound barrier while filling in gaps surrounding penetrations and in cavity walls
- Tack-free in 10 minutes and resistant to decay and heat
- Can be installed around windows and doors for thermal insulation

Spectrem® Simple Seal



- High performance silicone extrusion
- Designed to seal joints and gaps ranging from low to high movement conditions
- Flexible and tear-resistant
- Ease of installation reduces time and labor cost

Dymonic® Simple Seal

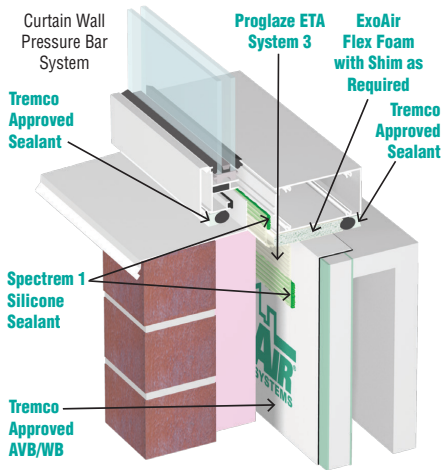


- Medium modulus, preformed polyurethane extrusion
- Designed to bridge joints under elastomeric wall coatings
- Cost effective alternative to cutting out existing failed sealant
- Highly flexible and tear-resistant

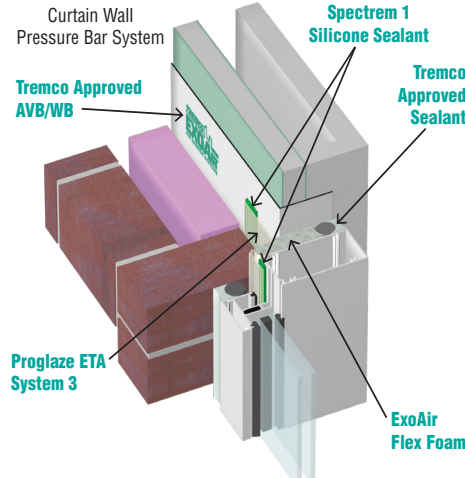
TRANSITIONS APPLICATIONS

TYPICAL COMMERCIAL INSTALLATION USING PROGLAZE® ETA AND EXOAIR® FLEX FOAM

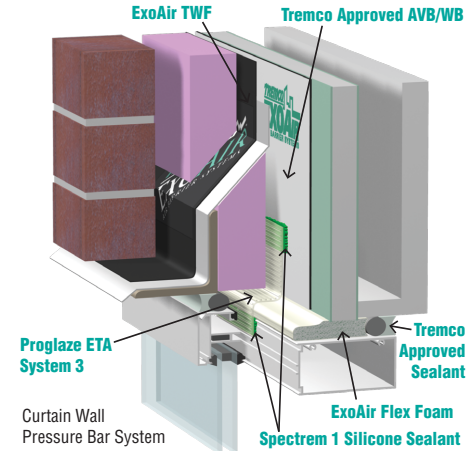
SILL DETAIL



JAMB DETAIL



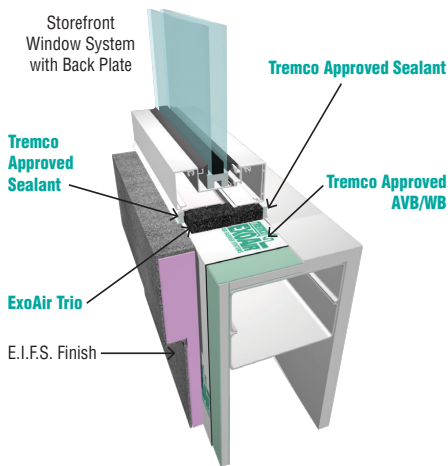
HEAD DETAIL



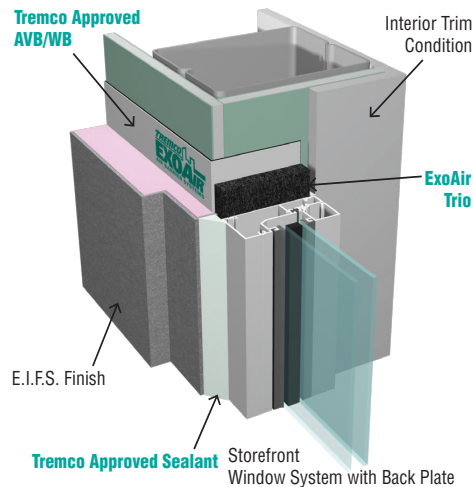
BENEFITS: Proglaze® ETA and ExoAir® Flex Foam address connections to the curtain wall system and add thermal protection in addition to air and water performance.

TYPICAL COMMERCIAL INSTALLATION USING EXOAIR® TRIO

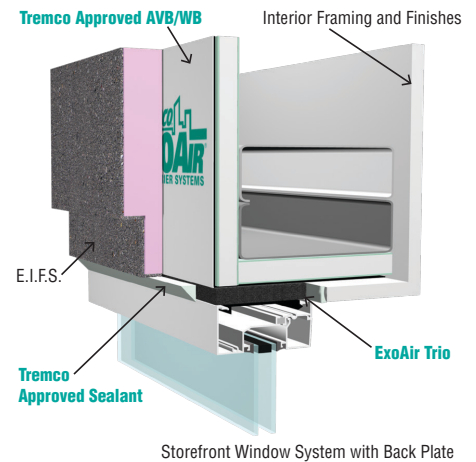
SILL DETAIL



JAMB DETAIL



HEAD DETAIL



BENEFITS: ExoAir® Trio is an integral vapor retarder that allows the system to dry to the outside. ExoAir Trio combines air, water and thermal protection into one material.