



TREMfloor™ URETHANE CEMENT FLOORING

*Hazard Analysis Critical Control Point (HACCP) International-Certified,
Antimicrobial-Treated Cementitious Urethane Flooring Systems & Compatible Sealers*





TREMfloor™ Urethane Cement: Anti-Microbial Cementitious Urethane Flooring

Proving that a building is able to meet a high standard of hygiene is essential in many sectors, especially contamination-sensitive settings such as the food and beverage, pharmaceutical and electronics industries.

TREMfloor™ is a leading line of Hazard Analysis and Critical Control Point (HACCP) International-certified, antimicrobial-treated cementitious urethane flooring systems for use in a wide variety of these, and other, applications.



The key aspects of TREMfloor that make it an ultra-hygienic flooring system include its seamless, impervious, highly durable nature combined with its ability to incorporate coving and stainless steel drainage. TREMfloor even includes the natural silver-ion based antibacterial agent Polygiene®, which has been proven to meet the ISO 22916 standard.



While initially designed for the food and beverage industry, many other sectors are turning to HACCP International-certified building materials, as they need systems that can create a highly-sanitary working environment, able to withstand difficult working conditions.

The Tremco Construction Products Group Difference

Speed construction or restoration. Simplify installation. Extend the construction season. A Tremco Construction Product Group (CPG) single-source building envelope means more for everyone – more satisfied contractors, more comfortable occupants or tenants, and more efficient structures and cost-effective operation for owners.



Faster Construction Time

Lightweight, fast-curing and prefabricated products mean less occupant disruption, faster return to service, less revenue lost — and no call-backs.



Any Look You Want

A wide range of colors and finishes like brick, granite, metals, stucco and more provide maximum flexibility in your roof and façade aesthetic.



Stronger and More Resilient

Our systems are designed for maximum durability, many with service lives far surpassing that of competing systems.



Leak-Free Performance

Products provide maximum protection from air, moisture and thermal infiltration — and are performance tested in our one-of-a-kind Sustainable Building Solutions Test Facility.



Cost Effective for the Long Term

A broad range of products can fit any project budget — but our energy efficiency and maintenance solutions can also help you ensure cost-effective ownership and operation for the long term.



Better Insulated

Industry-leading brands provide solutions for more efficient building construction and operation, and exceed strict energy codes for insulation.



One Point of Contact

Our products and systems are backed by industry-leading warranties — all from a single point of contact. We can also help with everything from asset management to diagnostics to installer training.



Leading Edge Sustainability

Our building solutions help you meet green building standards like Net Zero, Living Building Challenge, Passive House and more.

CONTENTS

TREMfloor Urethane Cement Systems Overview.....	2
TREMfloor Urethane Cement Systems Selection Guide.....	4-5
TREMfloor Urethane Cement HF (1/4").....	6-7
TREMfloor Urethane Cement RT (1/4").....	8-9
TREMfloor Urethane Cement SR (1/4").....	10-11
TREMfloor Urethane Cement MF (3/16").....	12-13
TREMfloor Urethane Cement SL (1/8").....	14-15
TREMfloor Urethane Cement Cove.....	16-17
Sealers.....	18-22
TREMfloor Urethane Cement FC.....	18
TREMfloor Urethane Cement FCUV.....	19
TREMfloor Urethane Cement SR Sealer.....	20
TREMCO Sealer 200.....	21
TREMCO Sealer 300.....	22



GALLERY FURNITURE
Fort Bend County, Texas

TREMfloor Urethane Cement SR + TREMfloor Urethane Cement FCUV



GALLERY FURNITURE PROTECTS WITH TREMFLOOR URETHANE CEMENT SR AND FCUV

This 165,000 ft² location houses a sprawling collection of sofas, tables and light fittings, mixed with a few surprising attractions — and TREMfloor Urethane Cement flooring specialists were happy to provide a number of flooring materials for use on the site.

TREMfloor Urethane Cement SR with a TREMfloor Urethane Cement FCUV topcoat was installed in the store’s full-service, on-site restaurant, Brick & Mortar Kitchen. TREMfloor Urethane Cement SR is a slurry-broadcast, anti-slip and wear-resistant antimicrobial-treated cementitious urethane flooring system.

The system offers excellent chemical-, wear- and stain-resistance properties — combined with UV-stability — in order to prevent the surface from yellowing with exposure to sunlight... a must with all the bright Texas sun pouring through the glass ceiling.

Client	Gallery Furniture
Location	Fort Bend Co., Texas
Product	TREMfloor Urethane Cement SR + FCUV
Type	Cementitious Urethane
Area	165,000 ft ²

TREMfloor Urethane Cement HF at 1/4"
TREMfloor Urethane Cement SR at 1/4"
TREMfloor Urethane Cement SR w/ Broadcast & Sealer at 1/4"
TREMfloor Urethane Cement SL at 1/8"
TREMfloor Urethane Cement SL w/ Quartz Broadcast & Sealer at 3/16"
TREMfloor Urethane Cement RT at 1/4"
TREMfloor Urethane Cement MF at 3/16"
TREMfloor Urethane Cement Cove

INTENDED USE

Medium Duty				•	•		•	
Heavy Duty	•	•	•				•	

FEATURES & BENEFITS

Fast Return-to-Service	•	•		•	•	•	•	•
Seamless	•	•	•	•	•	•	•	•
Polygiene® Antimicrobial	•	•	•	•	•	•	•	•
Chemical Resistance	•	•	•	•	•	•	•	•
Slip Resistance	•	•	•		•	•		
Continuous Temperature Resistance Up to 180° F	•	•	•	•	•	•	•	
Continuous Temperature Resistance Up to 200° F	•	•				•		
Unaffected by MVT	•	•	•	•	•	•	•	
Low Odor		•		•			•	
Easily Cleaned				•			•	

TEXTURE

Smooth				•			•	•
Textured	•	•	•		•	•		

FINISH

Matte		•	*Finish Varies w/ Sealer ↓	•	*Finish Varies w/ Sealer ↓	•	•	•
Semi-Gloss	•							

SEALERS

TREMfloor FC:** Matte Finish Sealer with Polygiene with Polygiene Anti-Microbial Additive. Not UV-Resistant.

TREMfloor FCUV: Glossy Finish, UV-Resistant Sealer with Polygiene Anti-Microbial Additive.

TREMfloor SR Sealer: High-Gloss Finish, Cost-Effective Sealer with Polygiene Anti-Microbial Additive. Not UV-Resistant.

TREMCO Sealer 200: Clear Gloss, UV-Stable, Aliphatic Polyurethane Sealer.

TREMCO Sealer 300: Clear Gloss, UV-Stable, Polyaspartic Sealer.

	TREMfloor Urethane Cement HF at 1/4"	TREMfloor Urethane Cement SR at 1/4"	TREMfloor Urethane Cement SR w/ Broadcast & Sealer at 1/4"	TREMfloor Urethane Cement SL at 1/8"	TREMfloor Urethane Cement SL w/ Quartz Broadcast & Sealer at 3/16"	TREMfloor Urethane Cement RT at 1/4"	TREMfloor Urethane Cement MF at 3/16"	TREMfloor Urethane Cement Cove
INTENDED USE								
Medium Duty				•	•		•	
Heavy Duty	•	•	•			•		
COMMON USE AREAS								
Kitchens	•							
Fire Stations	•					•		
Animal Welfare	•				•	•		
Detention Centers				•			•	
Manufacturing Areas (Dry)				•			•	
Manufacturing Areas (Wet)	•				•			
Shower Areas		•	•		•			
Locker Rooms			•	•	•		•	
Bathrooms		•	•		•			
Car Dealership / Workshops					•		•	
Trash Areas	•				•	•		
Mechanical Rooms	•			•	•		•	
Hospitality Back-of-House Areas		•			•		•	
Service Corridors					•		•	

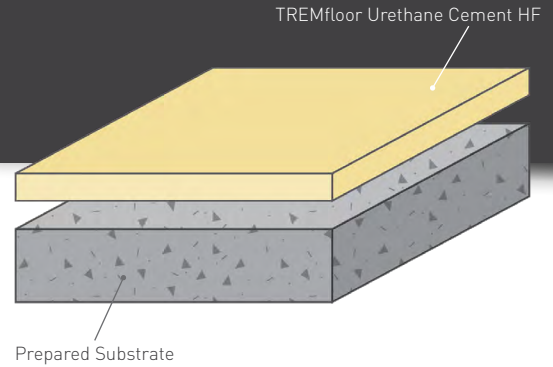
*All Areas Requiring Coving

*TREMfloor Urethane Cement SL and MF without a quartz broadcast requires the use of a sealer coat or primer.
 **TREMfloor Urethane Cement FC can be used as a primer over very porous surfaces and/or heavily trafficked environments.

TREMfloor Urethane Cement HF (1/4")

Heavy Duty Finish
Urethane Cement System

A HACCP International certified urethane cement system with a textured semi-gloss finish, ideal for wet environments prone to spills like animal welfare facilities or kitchen areas.



Fast Return-to-Service:

Cures in under 24 hours to help minimize occupant disruption.



Seamless:

No joints or seams to harbor germs, dirt or debris.



Polygiene® Antimicrobial:

Contains a silver ion antimicrobial additive to protect the surface.



Chemical-Resistant:

Protects against food by-products, fats, hot oils, blood, sugar and acids.



Slip-Resistant:

Positively textured profile to minimize slip risks in wet or damp areas.



Temperature-Resistant:

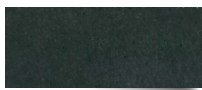
Resistant to temperatures of up to 250°F and suitable for steam cleaning.



Unaffected by MVT:

Allows moisture to move through the material at a safe rate.

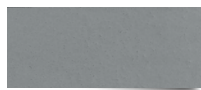
Available Colors:



Black



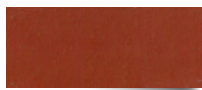
Dark Gray



Common Gray



Tan



Red



Green



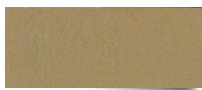
Cream*



Blue*



Safety Yellow*



Khaki*

*Special Order Color

COVERAGE RATES: (66 LB KIT)

24 sq ft/kit at 1/4"

COMPRESSIVE STRENGTH:

ASTM C 579 8,000 psi

TENSILE STRENGTH:

ASTM C 307 1,450 psi

COEFFICIENT OF THERMAL EXPANSION:

ASTM C 531 1.1×10^{-5} in/in/°F

FLEXURAL STRENGTH:

ASTM C 580 2,900 psi

ABRASION RESISTANCE:

ASTM D 4060
CS 17 Wheel, 1000 cycles 0.05g loss

ADHESION:

ASTM D 4541 400 psi
(100% concrete failure)

TEMPERATURE RESISTANCE:

Continuous Exposure: 220°F

Intermittent Spills: 250°F

VOC: 5 g/l

SPEED OF CURE:

	50°F	70°F	90°F
Light Traffic	12-14 hrs	6-8 hrs	3-5 hrs
Full Traffic	24-36 hrs	12-16 hrs	8-10 hrs
Full Chemical Cure	5-7 days	3-5 days	1-2 days

The applied colors may differ from the examples shown. General wear on Safety Yellow may be more visible. For a full color chart and samples, contact your local Tremco rep.

Products Included In This System

66 lb Kit Includes:

TREMfloor Urethane Cement Base A 5 lbs Single Pack
TREMfloor Urethane Cement Hardener B 5 lbs Single Pack
TREMfloor Urethane Cement HF Filler C 55 lbs
Pigment Pack 1 lb

Coverage Rate:

TREMfloor Urethane Cement HF
21 sq ft/kit at 1/4"

Installation

Detailed application instructions are available through tremcosealants.com.

Substrate Requirements

Concrete or screed substrate should have a minimum of 3,000 psi compressive strength, free from laitance, dust and other contamination. The substrate should be dry to ASTM requirements and free from excessive moisture vapor transmission.

Polygiene®

All TREMfloor Urethane Cement systems include a built in high performance antimicrobial, Polygiene®. This silver-ion based additive inhibits the growth of bacteria and molds and guards against surface degradation and odors caused by these microorganisms.

Color Stability

TREMfloor Urethane Cement is not color fast and may change color over time (exhibits a yellowing effect). Color change depends on the UV light and heat levels present as such the rate of change cannot be predicted. This is more noticeable in light colors and grays, but does not compromise the product's chemical resistance or physical characteristics. Special customized colors and designs can be produced to special order. For applications exposed to UV light, apply TREMfloor Urethane Cement FC UV

Technical Profile

The figures and test results shown overleaf are typical properties achieved in laboratory tests at 75°F and at 50% Relative Humidity.

Environmental Health & Safety

The finished system is assessed as non-hazardous to health and the environment. TREMfloor Urethane Cement systems are USDA/FDA compliant & HACCP International certified. The long service life and seamless surface reduce the need for repairs and maintenance. Environmental and health considerations are controlled during manufacture and application of the products.

Warranty

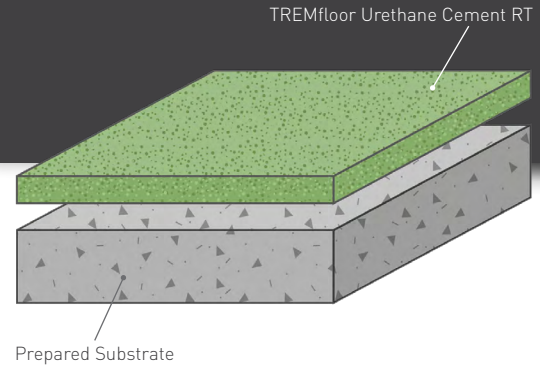
Tremco warrants its Products to be free of defects in materials but makes no warranty as to appearance or color. Since methods of application and on-site conditions are beyond our control and can affect performance, Tremco makes no other warranty, expressed or implied including warranties of MERCHANTABILITY and FITNESS FOR A PARTICULAR PURPOSE with respect to Tremco Products. Tremco's sole obligation shall be, at its option, to replace or refund the purchase price of the quantity of Tremco Products proven to be defective, and Tremco shall not be liable for any loss or damage.



TREMfloor Urethane Cement RT (1/4")

Rake and Trowel Urethane Cement System

A HACCP certified urethane cement system with a textured matte finish, ideal for areas where high performance is a requirement, such as fire stations, hangers, or high impact trash areas.



Fast Return-to-Service:

Cures in under 24 hours to help minimize occupant disruption.



Seamless:

No joints or seams to harbor germs, dirt or debris.



Polygiene® Antimicrobial:

Contains a silver ion antimicrobial additive to protect the surface.



Chemical-Resistant:

Protects against food by-products, fats, hot oils, blood, sugar and acids.



Slip-Resistant:

Positively textured profile to minimize slip risks in wet or damp areas.



Temperature-Resistant:

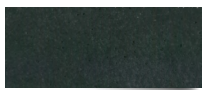
Resistant to temperatures of up to 250°F and suitable for steam cleaning.



Unaffected by MVT:

Allows moisture to move through the material at a safe rate.

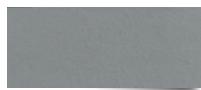
Available Colors:



Black



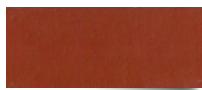
Dark Gray



Common Gray



Tan



Red



Green



Cream*



Blue*



Safety Yellow*



Khaki*

*Special Order Color

COVERAGE RATES: (55 LB KIT)

21 sq ft/kits at 1/4"

COMPRESSIVE STRENGTH:

ASTM C 579 8,000 psi

TENSILE STRENGTH:

ASTM C 307 1,450 psi

COEFFICIENT OF THERMAL EXPANSION:

ASTM C 531 1.1×10^{-5} in/in/°F

FLEXURAL STRENGTH:

ASTM C 580 2,900 psi

ABRASION RESISTANCE:

ASTM D 4060
CS 17 Wheel, 1000 cycles 0.07g loss

ADHESION:

ASTM D 4541 400 psi
(100% concrete failure)

TEMPERATURE RESISTANCE:

Continuous Exposure: 220°F

Intermittent Spills: 250°F

VOC:

6 g/l

SPEED OF CURE:

	50°F	70°F	90°F
Light Traffic	12-14 hrs	6-8 hrs	3-5 hrs
Full Traffic	24-36 hrs	12-16 hrs	8-10 hrs
Full Chemical Cure	5-7 days	3-5 days	1-2 days

The applied colors may differ from the examples shown. General wear on Safety Yellow may be more visible. For a full color chart and samples, contact your local Tremco rep.

Products Included In This System

55 lb Kit Includes:

TREMfloor Urethane Cement Base A 5 lbs Single Pack
TREMfloor Urethane Cement Hardener B 5 lbs Single Pack
TREMfloor Urethane Cement RT Filler C 44 lbs
Pigment Pack 1 lb

Coverage rate:

TREMfloor Urethane Cement RT
21 sq ft/kit at 1/4"

Installation

Detailed application instructions are available through tremcosealants.com.

Substrate Requirements

Concrete or screed substrate should have a minimum of 3,000 psi compressive strength, free from laitance, dust and other contamination. The substrate should be dry to ASTM requirements and free from excessive moisture vapor transmission.

Polygiene®

All TREMfloor Urethane Cement systems include a built in high performance antimicrobial, Polygiene®. This silver-ion based additive inhibits the growth of bacteria and molds and guards against surface degradation and odors caused by these microorganisms.

Color Stability

TREMfloor Urethane Cement is not color fast and may change color over time (exhibits a yellowing effect). Color change depends on the UV light and heat levels present as such the rate of change cannot be predicted. This is more noticeable in light colors and grays, but does not compromise the product's chemical resistance or physical characteristics. Special customized colors and designs can be produced to special order. For applications exposed to UV light, apply TREMfloor Urethane Cement FC UV.

Technical Profile

The figures and test results shown overleaf are typical properties achieved in laboratory tests at 75°F and at 50% Relative Humidity.

Environmental Health & Safety

The finished system is assessed as non-hazardous to health and the environment. TREMfloor Urethane Cement systems are USDA/FDA compliant & HACCP International certified. The long service life and seamless surface reduce the need for repairs and maintenance. Environmental and health considerations are controlled during manufacture and application of the products.

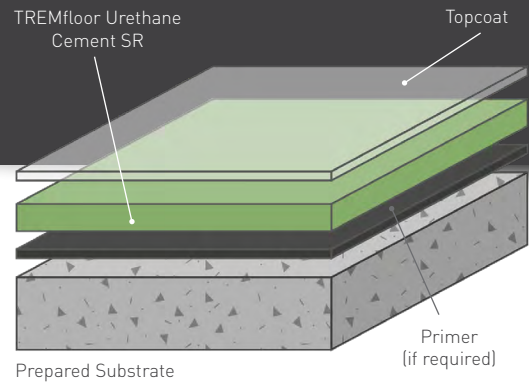
Warranty

Tremco warrants its Products to be free of defects in materials but makes no warranty as to appearance or color. Since methods of application and on-site conditions are beyond our control and can affect performance, Tremco makes no other warranty, expressed or implied including warranties of MERCHANTABILITY and FITNESS FOR A PARTICULAR PURPOSE with respect to Tremco Products. Tremco's sole obligation shall be, at its option, to replace or refund the purchase price of the quantity of Tremco Products proven to be defective, and Tremco shall not be liable for any loss or damage.

TREMfloor Urethane Cement SR (1/4")

Skid Resistant Urethane Cement System

A HACCP certified urethane cement system with a textured matte finish, ideal for wet areas such as showers, bathrooms, and back of house service areas.



Fast Return-to-Service:

Cures in under 24 hours to help minimize occupant disruption.



Seamless:

No joints or seams to harbor germs, dirt or debris.



Polygiene® Antimicrobial:

Contains a silver ion antimicrobial additive to protect the surface.



Low Odor:

Low odor installation, non-toxic, and phthalate-free formulation.



Slip-Resistant:

Positively textured profile to minimize slip risks in wet or damp areas.



Temperature-Resistant:

Resistant to temperatures of up to 210°F and suitable for steam cleaning.



Unaffected by MVT:

Allows moisture to move through the material at a safe rate.

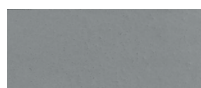
Available Colors:



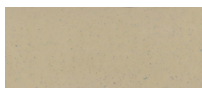
Black



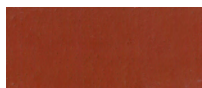
Dark Gray



Common Gray



Tan



Red



Green



Cream*



Blue*



Safety Yellow*



Khaki*

*Special Order Color

COVERAGE RATES: (47 LB KIT)

24 sq ft/kits at 1/4" (yielding 1/4" finished floor)

COMPRESSIVE STRENGTH:

ASTM C 579 8,128 psi

TENSILE STRENGTH:

ASTM C 307 1,450 psi

COEFFICIENT OF THERMAL EXPANSION:

ASTM C 531 1.5 x 10⁻⁵ in/in/°F

FLEXURAL STRENGTH:

ASTM C 580 2,900 psi

ABRASION RESISTANCE:

ASTM D 4060
CS 17 Wheel, 1000 cycles 0.05g loss

ADHESION:

ASTM D 4541 400 psi
(100% concrete failure)

TEMPERATURE RESISTANCE:*

Continuous Exposure: 200°F

Intermittent Spills: 250°F

VOC: 7 g/l

SPEED OF CURE:

	50°F	70°F	90°F
Light Traffic	12-14 hrs	6-8 hrs	3-5 hrs
Full Traffic	24-36 hrs	12-16 hrs	8-10 hrs
Full Chemical Cure	5-7 days	3-5 days	1-2 days

*Temperature resistance values shown apply when using TREMfloor Urethane Cement FC as the topcoat. The applied colors may differ from the examples shown. General wear on Safety Yellow may be more visible. For a full color chart and samples, contact your local Tremco Rep.

Products Included In This System

51 lb Kit Includes:

TREMfloor Urethane Cement Base A 5 lbs Single Pack
TREMfloor Urethane Cement Hardener B 5 lbs Single Pack
TREMfloor Urethane Cement SR Filler C 40 lbs
Pigment Pack 1 lb

Coverage Rate:

TREMfloor Urethane Cement SR
24 sq ft/kit at 1/4"

Broadcast: Quartz OR silica sand at 1 lb/sq ft

Topcoat Options:

TREMfloor Urethane Cement FC at 120 sq ft/kit
TREMfloor Urethane Cement FCUV at 230 sq ft/kit
TREMfloor Urethane Cement SR Sealer at 120 sq ft/kit

Installation

Detailed application instructions are available through tremcosealants.com.

Substrate Requirements

Concrete or screed substrate should have a minimum of 3,000 psi compressive strength, free from laitance, dust and other contamination. The substrate should be dry to ASTM requirements and free from excessive moisture vapor transmission.

Polygiene®

All TREMfloor Urethane Cement systems include a built in high performance antimicrobial, Polygiene®. This silver-ion based additive inhibits the growth of bacteria and molds and guards against surface degradation and odors caused by these microorganisms.

Color Stability

TREMfloor Urethane Cement is not color fast and may change color over time (exhibits a yellowing effect). Color change depends on the UV light and heat levels present as such the rate of change cannot be predicted. This is more noticeable in light colors and grays, but does not compromise the product's chemical resistance or physical characteristics. Special customized colors and designs can be produced to special order. For applications exposed to UV light, apply TREMfloor Urethane Cement FC UV.

Technical Profile

The figures and test results shown overleaf are typical properties achieved in laboratory tests at 75°F and at 50% Relative Humidity.

Environmental Health & Safety

The finished system is assessed as non-hazardous to health and the environment. TREMfloor Urethane Cement systems are USDA/FDA compliant & HACCP International certified. The long service life and seamless surface reduce the need for repairs and maintenance. Environmental and health considerations are controlled during manufacture and application of the products.

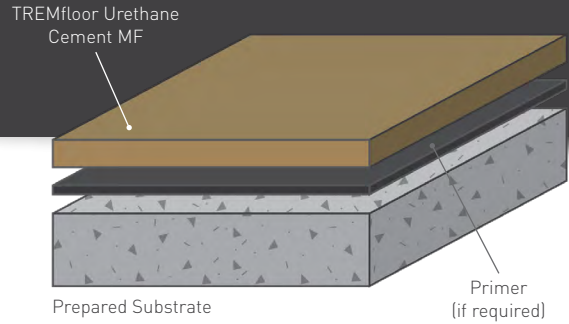
Warranty

Tremco warrants its Products to be free of defects in materials but makes no warranty as to appearance or color. Since methods of application and on-site conditions are beyond our control and can affect performance, Tremco makes no other warranty, expressed or implied including warranties of MERCHANTABILITY and FITNESS FOR A PARTICULAR PURPOSE with respect to Tremco Products. Tremco's sole obligation shall be, at its option, to replace or refund the purchase price of the quantity of Tremco Products proven to be defective, and Tremco shall not be liable for any loss or damage.

TREMfloor Urethane Cement MF (3/16")

Medium Duty Finish
Urethane Cement System

A HACCP International certified urethane cement system with a matte finish, ideal for dry areas such as mechanical rooms and processing and packaging areas.



Fast Return-to-Service:

Cures in under 24 hours to help minimize occupant disruption.



Seamless:

No joints or seams to harbor germs, dirt or debris.



Polygiene® Antimicrobial:

Contains a silver ion antimicrobial additive to protect the surface.



Easily Cleaned:

Minimal surface joints ensure the floor is easy to clean and sanitize.



Chemical-Resistant:

Protects against a variety of chemicals, solvents, and acids.



Unaffected by MVT:

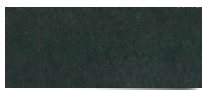
Allows moisture to move through the material at a safe rate.



Low Odor:

Low odor installation, non-toxic, and phthalate-free formulation.

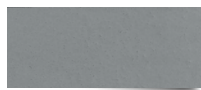
Available Colors:



Black



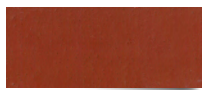
Dark Gray



Common Gray



Tan



Red



Green



Cream*



Blue*



Safety Yellow*



Khaki*

*Special Order Color

COVERAGE RATES: (40 LB KIT)

22 sq ft/kit at 3/16"

COMPRESSIVE STRENGTH:

ASTM C 579 >7,250 psi

TENSILE STRENGTH:

ASTM C 307 1,740 psi

COEFFICIENT OF THERMAL EXPANSION:

ASTM C 531 2.2×10^{-5} in/in/°F

FLEXURAL STRENGTH:

ASTM C 580 2,900 psi

ABRASION RESISTANCE:

ASTM D 4060
CS 17 Wheel, 1000 cycles 0.07g loss

ADHESION:

ASTM D 4541 400 psi
(100% concrete failure)

TEMPERATURE RESISTANCE:

Continuous Exposure: 180°F

Intermittent Spills: 200°F

VOC:

7 g/l

SPEED OF CURE:

	50°F	70°F	90°F
Light Traffic	12-14 hrs	6-8 hrs	3-5 hrs
Full Traffic	24-36 hrs	12-16 hrs	8-10 hrs
Full Chemical Cure	5-7 days	3-5 days	1-2 days

The applied colors may differ from the examples shown. General wear on Safety Yellow may be more visible. For a full color chart and samples, contact your local Tremco rep.

Products Included In This System

40 lb Kit Includes:

TREMfloor Urethane Cement Base A 5 lbs Single Pack
TREMfloor Urethane Cement Hardener B 5 lbs Single Pack
TREMfloor Urethane Cement MF Filler C 2 9lbs
Pigment Pack 1 lb

Coverage Rate:

TREMfloor Urethane Cement MF
22 sq ft/kit at 3/16"

Installation

Detailed application instructions are also available through tremcosealants.com.

Substrate Requirements

Concrete or screed substrate should have a minimum of 3,000 psi compressive strength, free from laitance, dust and other contamination. The substrate should be dry to ASTM requirements and free from excessive moisture vapor transmission.

Polygiene®

All TREMfloor Urethane Cement systems include a built in high performance antimicrobial, Polygiene®. This silver-ion based additive inhibits the growth of bacteria and molds and guards against surface degradation and odors caused by these microorganisms.

Color Stability

TREMfloor Urethane Cement is not color fast and may change color over time (exhibits a yellowing effect). Color change depends on the UV light and heat levels present as such the rate of change cannot be predicted. This is more noticeable in light colors and grays, but does not compromise the product's chemical resistance or physical characteristics. Special colors and designs can be produced to order. For applications exposed to UV light, apply TREMfloor Urethane Cement FC UV.

Technical Profile

The figures and test results shown overleaf are typical properties achieved in laboratory tests at 75°F and at 50% Relative Humidity.

Environmental Health & Safety

The finished system is assessed as non-hazardous to health and the environment. TREMfloor Urethane Cement systems are USDA/FDA compliant & HACCP International certified. The long service life and seamless surface reduce the need for repairs and maintenance. Environmental and health considerations are controlled during manufacture and application of the products.

Warranty

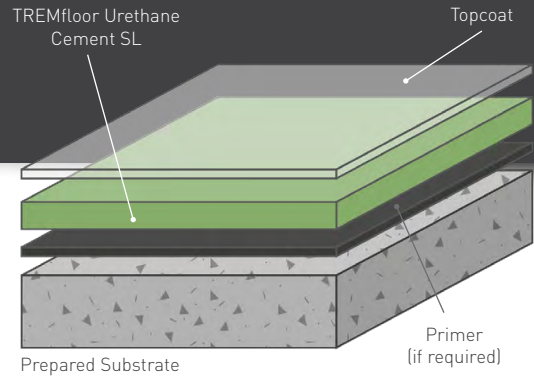
Tremco warrants its Products to be free of defects in materials but makes no warranty as to appearance or color. Since methods of application and on-site conditions are beyond our control and can affect performance, Tremco makes no other warranty, expressed or implied including warranties of MERCHANTABILITY and FITNESS FOR A PARTICULAR PURPOSE with respect to Tremco Products. Tremco's sole obligation shall be, at its option, to replace or refund the purchase price of the quantity of Tremco Products proven to be defective, and Tremco shall not be liable for any loss or damage.



TREMfloor Urethane Cement SL (1/8")

Self-Leveling Urethane Cement System

A HACCP International certified urethane cement system with a smooth matte finish, ideal for dry manufacturing areas. Broadcast and seal for wet areas such as beverage processing plants or bathrooms.



Fast Return-to-Service:

Cures in under 24 hours to help minimize occupant disruption.



Seamless:

No joints or seams to harbor germs, dirt or debris.



Polygiene® Antimicrobial:

Contains a silver ion antimicrobial additive to protect the surface.



Lifecycle Cost Efficiencies:

Offers significant lifecycle cost savings compared to tile or acid brick.



Unaffected by MVT:

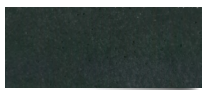
Allows moisture to move through the material at a safe rate.



Low Odor:

Low odor installation, non-toxic, and phthalate-free formulation.

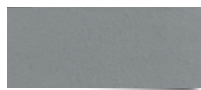
Available Colors:



Black



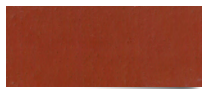
Dark Gray



Common Gray



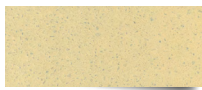
Tan



Red



Green



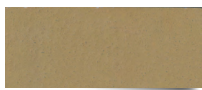
Cream*



Blue*



Safety Yellow*



Khaki*

*Special Order Color

COVERAGE RATES: (61 LB KIT)

63 sq ft/kit at 1/8"

COMPRESSIVE STRENGTH:

ASTM C 579 >7,250 psi

TENSILE STRENGTH:

ASTM C 307 1,740 psi

COEFFICIENT OF THERMAL EXPANSION:

ASTM C 531 2.7×10^{-5} in/in/°F

FLEXURAL STRENGTH:

ASTM C 580 2,900 psi

ABRASION RESISTANCE:

ASTM D 4060
CS 17 Wheel, 1000 cycles 0.05g loss

ADHESION:

ASTM D 4541 400 psi
(100% concrete failure)

TEMPERATURE RESISTANCE:*

Continuous Exposure: 180°F

Intermittent Spills: 220°F

VOC: 9 g/l

SPEED OF CURE:

	50°F	70°F	90°F
Light Traffic	12-14 hrs	6-8 hrs	3-5 hrs
Full Traffic	24-36 hrs	12-16 hrs	8-10 hrs
Full Chemical Cure	5-7 days	3-5 days	1-2 days

The applied colors may differ from the examples shown. For a full color chart and samples, contact your local Tremco rep.

Products Included In This System

61 lb Kit Includes:

TREMfloor Urethane Cement Base A 10 lbs Double Pack
TREMfloor Urethane Cement Hardener B 10 lbs Double Pack
TREMfloor Urethane Cement SL Filler C 40 lbs
(2) 1lb. Pigment Packs

Coverage Rate:

TREMfloor Urethane Cement SL
63 sq ft /unit at 1/8"

Topcoat Options:

TREMfloor Urethane Cement FC at 120 sq ft/kit
TREMfloor Urethane Cement FCUV at 230 sq ft/kit
TREMfloor Urethane Cement SR Sealer at 120 sq ft/kit

Substrate Requirements

Concrete or screed substrate should have a minimum of 3,000 psi compressive strength, free from laitance, dust and other contamination. The substrate should be dry to ASTM requirements and free from excessive moisture vapor transmission.

Polygiene®

All TREMfloor Urethane Cement systems include a built in high performance antimicrobial, Polygiene®. This silver-ion based additive inhibits the growth of bacteria and molds and guards against surface degradation and odors caused by these microorganisms.

Color Stability

TREMfloor Urethane Cement is not color fast and may change color over time (exhibits a yellowing effect). Color change depends on the UV light and heat levels present as such the rate of change cannot be predicted. This is more noticeable in light colors and grays, but does not compromise the product's chemical resistance or physical characteristics. Special customized colors and designs can be produced to special order. For applications exposed to UV light, apply TREMfloor Urethane Cement FC UV.

Technical Profile

The figures and test results shown overleaf are typical properties achieved in laboratory tests at 75°F and at 50% Relative Humidity.

Installation

Detailed application instructions are also available through tremcosealants.com.

Environmental Health & Safety

The finished system is assessed as non-hazardous to health and the environment. TREMfloor Urethane Cement systems are USDA/FDA compliant & HACCP International certified. The long service life and seamless surface reduce the need for repairs and maintenance. Environmental and health considerations are controlled during manufacture and application of the products.

Warranty

Tremco warrants its Products to be free of defects in materials but makes no warranty as to appearance or color. Since methods of application and on-site conditions are beyond our control and can affect performance, Tremco makes no other warranty, expressed or implied including warranties of MERCHANTABILITY and FITNESS FOR A PARTICULAR PURPOSE with respect to Tremco Products. Tremco's sole obligation shall be, at its option, to replace or refund the purchase price of the quantity of Tremco Products proven to be defective, and Tremco shall not be liable for any loss or damage.



TREMfloor Urethane Cement Cove

Urethane Cement Cove System

A HACCP certified urethane cove mortar system, complimentary to any TREMfloor™ Urethane Cement flooring system, that provides a seamless, hygienic transition between the floor and wall.



Fast Return-to-Service:

Cures in under 24 hours to help minimize occupant disruption.



Seamless:

No joints or seams to harbor germs, dirt or debris.



Polygiene® Antimicrobial:

Contains a silver ion antimicrobial additive to protect the surface.



Lifecycle Cost Efficiencies:

Offers significant lifecycle cost savings compared to tile or acid brick.



Easily Maintained:

Can be patch-repaired in position to minimize renovation costs.



Chemical-Resistant:

Protects against a variety of chemicals, solvents, and acids.

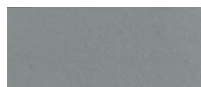
Available Colors:



Black



Dark Gray



Common Gray



Tan



Red



Green



Cream*



Blue*



Safety Yellow*



Khaki*

*Special Order Color

COVERAGE RATES: (32 LB KIT)

16 sq ft/kit or 48 linear ft/kit at 4" high at 1/8"
11 sq ft/kit or 33 linear ft/kit at 4" high at 3/16"

COMPRESSIVE STRENGTH:

ASTM C 579 8,000 psi

TENSILE STRENGTH:

ASTM C 307 1,450 psi

COEFFICIENT OF THERMAL EXPANSION:

ASTM C 531 1.17×10^{-5} in/in/°F

FLEXURAL STRENGTH:

ASTM C 580 2,900 psi

ABRASION RESISTANCE:

ASTM D 4060
CS 17 Wheel, 1000 cycles 0.079g loss

ADHESION:

ASTM D 4541 400 psi
(100% concrete failure)

TEMPERATURE RESISTANCE:*

Continuous Exposure: 220°F

Intermittent Spills: 250°F

VOC: 5 g/l

The applied colors may differ from the examples shown. For a full color chart and samples, contact your local Tremco rep.

Products Included In This System

32 lb Kit Includes:

TREMfloor Urethane Cement Cove Base A 2.5lbs
TREMfloor Urethane Cement Cove Hardener B 2.5 lbs
TREMfloor Urethane Cement Cove filler C 26 lbs
Pigment Pack 1lb

Primer: Contact Tremco Technical Services for
(if required) substrate-specific primers

Coving Coverage Rate:

TREMfloor Urethane Cement Cove
16 sq ft/kit or 48 linear ft/kit at 4" high at 1/8" 11
sq ft/kit or 33 linear ft/kit at 4" high at 3/16"

Topcoat Options:

TREMfloor Urethane Cement FC at 120 sq ft/kit
TREMfloor Urethane Cement FCUV at 230 sq ft/kit
TREMfloor Urethane Cement SR Sealer at 120 sq ft/kit

Substrate Requirements

Concrete or screed substrate should have a minimum of 3,000 psi compressive strength, free from laitance, dust and other contamination. The substrate should be dry to ASTM requirements and free from excessive moisture vapor transmission.

Polygiene®

All TREMfloor Urethane Cement systems include a built in high performance antimicrobial, Polygiene®. This silver-ion based additive inhibits the growth of bacteria and molds and guards against surface degradation and odors caused by these microorganisms. Detailed antimicrobial information and test results are available upon request.

Color Stability

TREMfloor Urethane Cement is not color fast and may change color over time (exhibits a yellowing effect). Color change depends on the UV light and heat levels present as such the rate of change cannot be predicted. This is more noticeable in light colors and grays, but does not compromise the product's chemical resistance or physical characteristics. Special customized colors and designs can be produced to special order. For applications exposed to UV light, apply TREMfloor Urethane Cement FC UV.

Technical Profile

The figures and test results shown overleaf are typical properties achieved in laboratory tests at 75°F and at 50% Relative Humidity.

Installation

Detailed application instructions are also available through tremcosealants.com.

Environmental Health & Safety

The finished system is assessed as non-hazardous to health and the environment. TREMfloor Urethane Cement systems are USDA/FDA compliant & HACCP International certified. The long service life and seamless surface reduce the need for repairs and maintenance. Environmental and health considerations are controlled during manufacture and application of the products.

Warranty

Tremco warrants its Products to be free of defects in materials but makes no warranty as to appearance or color. Since methods of application and on-site conditions are beyond our control and can affect performance, Tremco makes no other warranty, expressed or implied including warranties of MERCHANTABILITY and FITNESS FOR A PARTICULAR PURPOSE with respect to Tremco Products. Tremco's sole obligation shall be, at its option, to replace or refund the purchase price of the quantity of Tremco Products proven to be defective, and Tremco shall not be liable for any loss or damage.



TREMfloor Urethane Cement FC

Urethane Cement Matte Finish Coat and Primer

A pigmented HACCP International certified urethane cement sealer with a matte finish that can be used as a primer in cases of highly porous substrates/or heavily trafficked areas.



Fast Return-to-Service:

Cures in under 24 hours to help minimize occupant disruption.



Polygiene® Antimicrobial:

Contains a silver ion antimicrobial additive to protect the surface.

Available Colors:



Products Included:

TREMfloor Urethane Cement FC Includes Pre-Measured Kits:

TREMfloor Urethane Cement Base A 5lbs
TREMfloor Urethane Cement Hardener B 5lbs
TREMfloor Urethane Cement FC filler C 5.49lbs
Pigment Pack 1lb

Coverage Rate (if broadcasting may vary based on aggregate size)

TREMfloor Urethane Cement FC: 120 sq ft/kit at 10 mils

Substrate Requirements

Concrete or screed substrate should have a minimum of 3,000 psi compressive strength, free from laitance, dust and other contamination. The substrate should be dry to ASTM requirements and free from excessive moisture vapor transmission.

Polygiene®

All TREMfloor Urethane Cement systems include a built in high performance antimicrobial, Polygiene®. This silver-ion based additive inhibits the growth of bacteria and molds and guards against surface degradation and odors caused by these microorganisms.

Color Stability

TREMfloor Urethane Cement is not color fast and may change color over time (exhibits a yellowing effect). Color change depends on the UV light and heat levels present as such the rate of change cannot be predicted. This is more noticeable in light colors and grays, but does not compromise the product's chemical resistance or physical characteristics. Special customized colors and designs can be produced to special order. For applications exposed to UV light, apply TREMfloor Urethane Cement FC UV.

COEFFICIENT OF THERMAL EXPANSION:

ASTM C 531	1.1 x 10 ⁻⁵ in/in/°F
------------	---------------------------------

ABRASION RESISTANCE:

ASTM D 4060 CS 17 Wheel, 1000 cycles	0.05g loss
---	------------

TEMPERATURE RESISTANCE:*

Continuous Exposure:	220°F
Intermittent Spills:	250°F

The applied colors may differ from the examples shown. For a full color chart and samples, contact your local Tremco rep.

Technical Profile

The figures and test results shown overleaf are typical properties achieved in laboratory tests at 75°F and at 50% Relative Humidity.

Installation

Detailed application instructions are also available through tremco sealants.com.

Environmental Health & Safety

The finished system is assessed as non-hazardous to health and the environment. TREMfloor Urethane Cement systems are USDA/FDA compliant & HACCP International certified. The long service life and seamless surface reduce the need for repairs and maintenance. Environmental and health considerations are controlled during manufacture and application of the products.

Warranty

Tremco warrants its Products to be free of defects in materials but makes no warranty as to appearance or color. Since methods of application and on-site conditions are beyond our control and can affect performance, Tremco makes no other warranty, expressed or implied including warranties of MERCHANTABILITY and FITNESS FOR A PARTICULAR PURPOSE with respect to Tremco Products. Tremco's sole obligation shall be, at its option, to replace or refund the purchase price of the quantity of Tremco Products proven to be defective, and Tremco shall not be liable for any loss or damage.

TREMfloor Urethane Cement FCUV

Urethane Cement UV-Stable Finish Coat

A pigmented UV stable HACCP International certified urethane cement sealer with a semi-gloss finish.



Fast Return-to-Service:

Cures in under 24 hours to help minimize occupant disruption.



Polygiene® Antimicrobial:

Contains a silver ion antimicrobial additive to protect the surface.

COEFFICIENT OF THERMAL EXPANSION:

ASTM C 531	1.5 x 10 ⁻⁵ in/in/°F
------------	---------------------------------

ABRASION RESISTANCE:

ASTM D 4060 CS 17 Wheel, 1000 cycles	0.05g loss
---	------------

TEMPERATURE RESISTANCE:*

Continuous Exposure:	200°F
Intermittent Spills:	250°F

The applied colors may differ from the examples shown. For a full color chart and samples, contact your local Tremco rep.

Available Colors:



Products Included:

TREMfloor Urethane Cement FCUV Kit Includes Pre-Measured Units:

TREMfloor Urethane Cement FCUV Base A 7.1lbs
TREMfloor Urethane Cement FCUV Hardener B 9.6lbs
TREMfloor Urethane Cement FCUV filler C 7.1lbs
Pigment Pack 1lb

Coverage Rate (if broadcasting may vary based on aggregate size)

TREMfloor Urethane Cement FCUV: 230 sq ft/kit at 12 mils

Substrate Requirements

Concrete or screed substrate should have a minimum of 3,000 psi compressive strength, free from laitance, dust and other contamination. The substrate should be dry to ASTM requirements and free from excessive moisture vapor transmission.

Polygiene®

All TREMfloor Urethane Cement systems include a built in high performance antimicrobial, Polygiene®. This silver-ion based additive inhibits the growth of bacteria and molds and guards against surface degradation and odors caused by these microorganisms.

Color Stability

TREMfloor Urethane Cement is not color fast and may change color over time (exhibits a yellowing effect). Color change depends on the UV light and heat levels present as such the rate of change cannot be predicted. This is more noticeable in light colors and grays, but does not compromise the product's chemical resistance or physical characteristics. Special customized colors and designs can be produced to special order. For applications exposed to UV light, apply TREMfloor Urethane Cement FC UV.

Technical Profile

The figures and test results shown overleaf are typical properties achieved in laboratory tests at 75°F and at 50% Relative Humidity.

Installation

Detailed application instructions are also available through tremcosealants.com.

Environmental Health & Safety

The finished system is assessed as non-hazardous to health and the environment. TREMfloor Urethane Cement systems are USDA/FDA compliant & HACCP International certified. The long service life and seamless surface reduce the need for repairs and maintenance. Environmental and health considerations are controlled during manufacture and application of the products.

Warranty

Tremco warrants its Products to be free of defects in materials but makes no warranty as to appearance or color. Since methods of application and on-site conditions are beyond our control and can affect performance, Tremco makes no other warranty, expressed or implied including warranties of MERCHANTABILITY and FITNESS FOR A PARTICULAR PURPOSE with respect to Tremco Products. Tremco's sole obligation shall be, at its option, to replace or refund the purchase price of the quantity of Tremco Products proven to be defective, and Tremco shall not be liable for any loss or damage.

TREMfloor Urethane Cement SR Sealer

High-Gloss, Skid-Resistant Aggregate Sealer

A pigmented HACCP International certified urethane cement sealer with a high-gloss finish.



Fast Return-to-Service:

Cures in under 24 hours to help minimize occupant disruption.



Polygiene® Antimicrobial:

Contains a silver ion antimicrobial additive to protect the surface.

Products Included:

TREMfloor Urethane Cement SR Sealer Includes Pre-Measured Units:

TREMfloor Urethane Cement SR Sealer Base A 12.7lbs
TREMfloor Urethane Cement SR Sealer Hardener B 3.3lbs
Pigment Pack 1lb

Coverage Rate *(if broadcasting may vary based on aggregate size)*
TREMfloor Urethane Cement SR Sealer: 120 sq ft/kit at 12 mils

Substrate Requirements

Concrete or screed substrate should have a minimum of 3,000 psi compressive strength, free from laitance, dust and other contamination. The substrate should be dry to ASTM requirements and free from excessive moisture vapor transmission.

Polygiene®

All TREMfloor Urethane Cement systems include a built in high performance antimicrobial, Polygiene®. This silver-ion based additive inhibits the growth of bacteria and molds and guards against surface degradation and odors caused by these microorganisms.

Color Stability

TREMfloor Urethane Cement is not color fast and may change color over time (exhibits a yellowing effect). Color change depends on the UV light and heat levels present as such the rate of change cannot be predicted. This is more noticeable in light colors and grays, but does not compromise the product's chemical resistance or physical characteristics. Special customized colors and designs can be produced to special order. For applications exposed to UV light, apply TREMfloor Urethane Cement FC UV.

ELONGATION AT BREAK:

ASTM D638	20%
-----------	-----

TENSILE STRENGTH:

ASTM C308	1,650 psi
-----------	-----------

FLEXURAL STRENGTH:

ASTM C580	2,400 psi
-----------	-----------

Technical Profile

The figures and test results shown overleaf are typical properties achieved in laboratory tests at 75°F and at 50% Relative Humidity.

Installation

Detailed application instructions are also available through tremcosealants.com.

Environmental Health & Safety

The finished system is assessed as non-hazardous to health and the environment. TREMfloor Urethane Cement systems are USDA/FDA compliant & HACCP International certified. The long service life and seamless surface reduce the need for repairs and maintenance. Environmental and health considerations are controlled during manufacture and application of the products.

Warranty

Tremco warrants its Products to be free of defects in materials but makes no warranty as to appearance or color. Since methods of application and on-site conditions are beyond our control and can affect performance, Tremco makes no other warranty, expressed or implied including warranties of MERCHANTABILITY and FITNESS FOR A PARTICULAR PURPOSE with respect to Tremco Products. Tremco's sole obligation shall be, at its option, to replace or refund the purchase price of the quantity of Tremco Products proven to be defective, and Tremco shall not be liable for any loss or damage.

TREMCO Sealer 200

UV-Stable Aliphatic Polyurethane Sealer

A medium duty UV-stable Aliphatic Polyurethane topcoat applied over urethane cement systems. This clear gloss sealer is color stable with good stain, chemical and impact resistance qualities.



UV Degradation Resistance:

Aliphatic polyurethane resists degradation caused by UV exposure.



Ease of Application:

Cures in under 24 hours to help minimize occupant disruption.



Stain-Resistant:

Color-stable formulation has good stain and impact-resistance qualities.



Chemical-Resistant:

Protects against food by-products, fats, hot oils, blood, sugar and acids.



Easily Maintained:

Durable and built to withstand vigorous daily cleaning protocols.

Products Included:

TREMCO Sealer 200 Kit Includes Pre-Measured Units:

TREMCO Sealer 200 Part A (0.65 gal)

TREMCO Sealer 200 Part B (0.35 gal)

Coverage Rate (if broadcasting may vary based on aggregate size)

TREMCO Sealer 200: 250-300 sq ft/kit at 6 mils WFT

Substrate Requirements

Concrete must be prepared mechanically to remove surface laitance. Oils, grease, dust, or other contaminant must be removed prior to surface preparation. Concrete must be free of curing compounds and form release agents. The prepared surface should have a nominal tensile strength of 200 psi per ASTM D-4541. All concrete substrates must be checked for moisture prior to product application using the Plastic Sheet Test, ASTM D-4263.

Installation

Detailed application instructions are also available through tremcosealants.com

PHYSICAL PROPERTIES

PROPERTY	TEST METHOD	TYPICAL RESULTS
VOC	ASTM D2369	<5 grams/liter
Solids by Volume	Calculation	78%
Pencil Hardness	ASTM D3363	2H
Taber Abrasion, CS-17 Wheel Impact	ASTM D-4060	25mg
Direct Impact	ASTM D-4060	> 160-inch lbs
Indirect Impact	ASTM D-4060	> 160-inch lbs
Drying Time, 6 mils WFT	ASTM D1640	6 hours
Gloss 60°	D523	85-90
Pot Life		
	50°F	90 min
	75°F	60 min
	90°F	45 min
Cure Time (Temperature Dependent)		
	Foot Traffic	*≈8-12 hours
	Full Service	*≈24 hours
	Chemical-Resistance	*≈3-4 days

Standard Color:



Clear Gloss

Technical Profile

The figures and test results shown are typical properties achieved in laboratory tests. Substrate application specifications require a temperature between 50°F-110°F with relative humidity not exceeding 90%. Substrate temperature must be 5°F above the Dew Point.

Warranty

Tremco warrants its Products to be free of defects in materials but makes no warranty as to appearance or color. Since methods of application and on-site conditions are beyond our control and can affect performance, Tremco makes no other warranty, expressed or implied including warranties of MERCHANTABILITY and FITNESS FOR A PARTICULAR PURPOSE with respect to Tremco Products. Tremco's sole obligation shall be, at its option, to replace or refund the purchase price of the quantity of Tremco Products proven to be defective, and Tremco shall not be liable for any loss or damage.

TREMCO Sealer 300

UV-Stable Polyaspartic Sealer

A high-solids heavy-duty UV Stable Polyaspartic topcoat applied over urethane cement systems. This fast-curing clear gloss sealer is USDA compliant, color stable and has excellent chemical, stain, and impact resistance properties.



UV Degradation Resistance:

Aliphatic polyurethane resists degradation caused by UV exposure.



Ease of Application:

Cures in under 24 hours to help minimize occupant disruption.



Stain-Resistant:

Color-stable formulation has good stain and impact-resistance qualities.



Chemical-Resistant:

Protects against food by-products, fats, hot oils, blood, sugar and acids.



Easily Maintained:

Durable and built to withstand vigorous daily cleaning protocols.

Products Included:

TREMCO Sealer 300 Kit Includes Pre-Measured Units:

TREMCO Sealer 300 Part A (0.64 gal)

TREMCO Sealer 300 Part B (0.36 gal)

Coverage Rate: (if broadcasting, may vary based on aggregate size)

TREMCO Sealer 300: 100-300 sq ft/kit at 5-15 mils WFT or 250-300 sq ft/kit at 4-5 mils DFT

Substrate Requirements

Concrete must be prepared mechanically to remove surface laitance. Oils, grease, dust, or other contaminant must be removed prior to surface preparation. Concrete must be free of curing compounds and form release agents. The prepared surface should have a nominal tensile strength of 200 psi per ASTM D7234. All concrete substrates must be checked for moisture prior to product application using the Plastic Sheet Test, ASTM D4263.

Installation

Detailed application instructions are also available through tremcosealants.com

PHYSICAL PROPERTIES

PROPERTY	TEST METHOD	TYPICAL RESULTS
VOC	ASTM D2369	10 grams/liter
Solids by Volume	Calculation	95%
Tensile Strength	ASTM D638	4,100 PSI
Shore D	ASTM D2040	70
Elongation	ASTM D638	110%
Die-Tear	ASTM D624	500 PSI
Taber Abrasion, CS-17 Wheel	ASTM D-4060	36mg
Drying Time, 6 mils WFT	ASTM D1640	3-4 hours
Pot Life		
50°F		20-25 min
75°F		12-18 min
90°F		5-10 min
Cure Time (Temperature Dependent)		
Foot Traffic		*≈2-4 hours
Full Service		*≈24 hours
Chemical-Resistance	ASTM D-1308	*≈7 days

Standard Color:



Clear Gloss

Technical Profile

The figures and test results shown are typical properties achieved in laboratory tests. Substrate application specifications require a temperature between 50°F-110°F with relative humidity not exceeding 90%. Substrate temperature must be 5°F above the Dew Point.

Warranty

Tremco warrants its Products to be free of defects in materials but makes no warranty as to appearance or color. Since methods of application and on-site conditions are beyond our control and can affect performance, Tremco makes no other warranty, expressed or implied including warranties of MERCHANTABILITY and FITNESS FOR A PARTICULAR PURPOSE with respect to Tremco Products. Tremco's sole obligation shall be, at its option, to replace or refund the purchase price of the quantity of Tremco Products proven to be defective, and Tremco shall not be liable for any loss or damage.



Tremco | 3735 Green Road | Beachwood, OH 44122 | US: 800.852.9068 | CAN: 800.363.3213 | tremcosealants.com

Tremco Construction Products Group (CPG) brings together Tremco CPG Inc. and its Dryvit and Nudura brands; Willseal; Prebuck LLC; Tremco Barrier Solutions, Inc.; Weatherproofing Technologies, Inc. and its Pure Air Control Services and Canam Building Envelope Specialists offerings; and Weatherproofing Technologies Canada, Inc.

Tremco® is a registered trademark of Tremco CPG Inc.
Use of the ® symbol indicates registration with the US Patent & Trademark Office and the Canadian Intellectual Property Office.

