

# VULKEM® HIGH-PERFORMANCE VEHICULAR TRAFFIC SYSTEMS

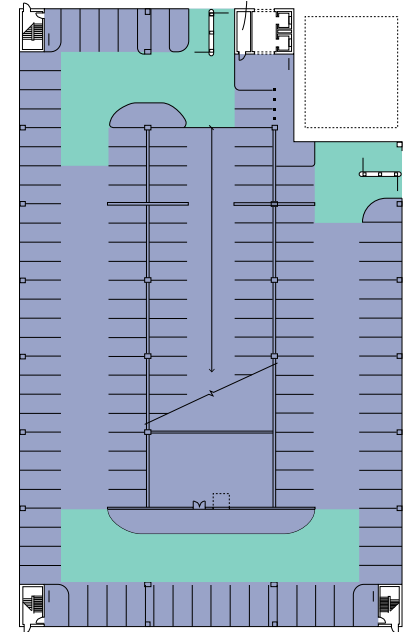


### Proven Performance + Innovative Technologies

A trusted manufacturer of high-performance Vulkem® Urethane Traffic Coatings for more than 4 decades, Tremco introduced its Vulkem EWS Polyurethane-Methacrylate (PUMA) systems in 2015. With the superior elongation properties of PUMA, Vulkem EWS offers exceptional crack-bridging capabilities versus traditional Methyl-Methacrylate (MMA) and Polymethyl Methacrylate (PMMA) technologies. PUMA-based systems offer the extreme durability of MMA with the flexibility of a urethane in the most punishing applications from bridges to parking decks. Additionally, Vulkem EWS systems feature fast cure independent of low temperatures, tenacious adhesion and superior abrasion resistance.

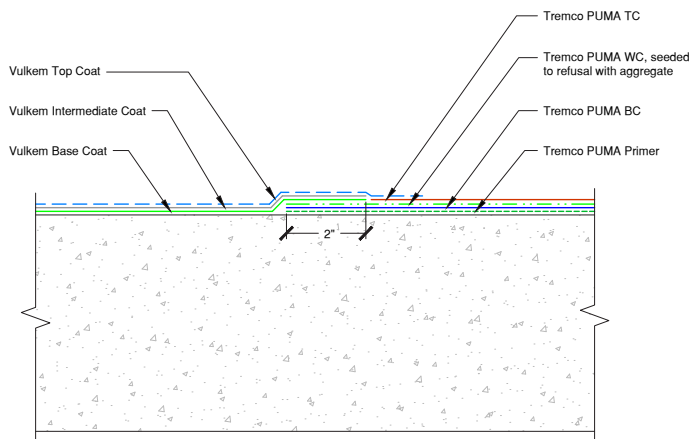
### The Best of Both Worlds – Vulkem Hybrid Systems

To address customer needs for longer-wearing systems capable of withstanding the harshest conditions in parking structures, Tremco now offers Vulkem Hybrid Systems that incorporate Vulkem EWS for extreme-wear areas such as helical turns, ramps and ticket spitters with Vulkem Urethane Vehicular Systems for drive lanes and parking stalls. This hybrid approach provides optimal performance as well as a 10-year material and wear warranty\*.

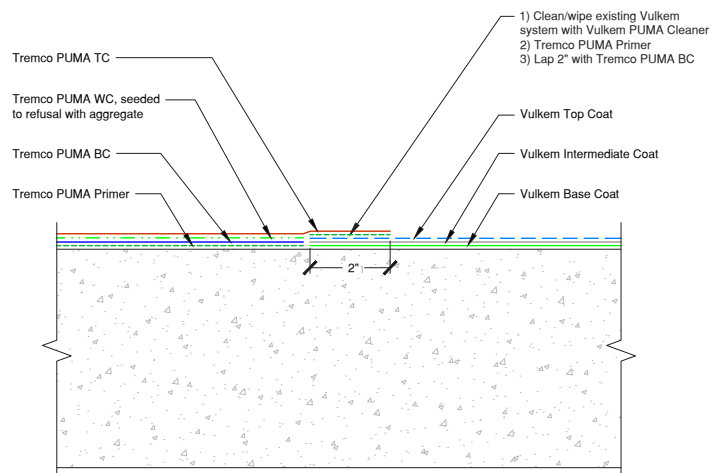


Vulkem EWS with PUMA Technology  
 Vulkem Urethane System

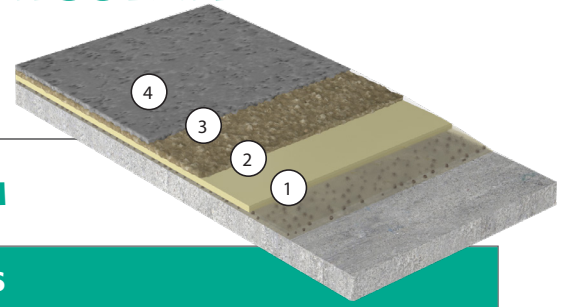
### Tie-in for Vulkem Urethane System to existing Vulkem EWS with PUMA technology



### Tie-in for Vulkem EWS with PUMA technology to existing Vulkem Urethane System



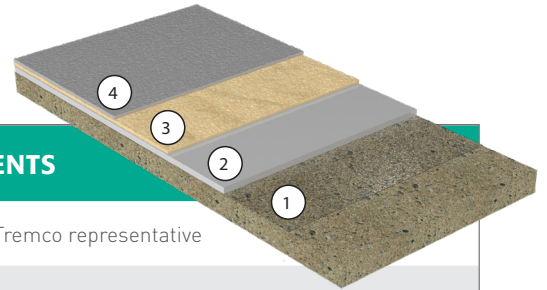
# VULKEM HIGH-PERFORMANCE VEHICULAR TRAFFIC SYSTEMS



## VULKEM EWS WITH PUMA TECHNOLOGY VEHICULAR SYSTEM

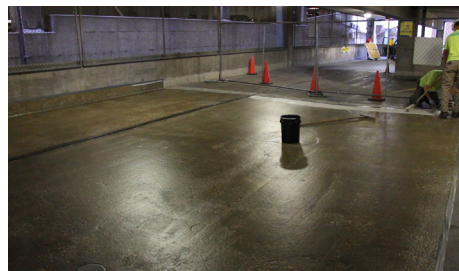
PRODUCT	COVERAGE RATE	WET MILS	COMMENTS
1 Tremco PUMA Primer	90 ft <sup>2</sup> /gal	17	Lightly broadcast silica sand.
2 Tremco PUMA BC	20 ft <sup>2</sup> /gal	80	Allow 45 min to cure before proceeding.
3 Tremco PUMA WC with PUMA filler powder	25 ft <sup>2</sup> /gal	65	Broadcast silica sand to refusal. Allow 45 min to cure before proceeding.
4 Tremco PUMA TC	53-90 ft <sup>2</sup> /gal	17-30	Allow 60 min to cure before opening to traffic.

## VULKEM URETHANE VEHICULAR SYSTEM



PRODUCT	COVERAGE RATE	WET MILS	COMMENTS
1 Primer (condition dependent)	400 to 600ft <sup>2</sup> /gal	N/A	See local Tremco representative
2 Vulkem Base Coat	64 ft <sup>2</sup> /gal	25	See mixing instructions
3 Vulkem Intermediate Coat	105ft <sup>2</sup> /gal	15	16 - 30 mesh silica sand
4 Vulkem Top Coat	133 to 160ft <sup>2</sup> /gal	10 to 12	Vehicular traffic 72 hours after cure

Application information may vary by region. For specific information, please contact your local Tremco CSW representative. Consult Miami Dade Product Approval NOA No: 18-0319.02 & 18-0108.01 for Maximum Design Pressure Ratings.



Tremco Commercial Sealants & Waterproofing | 3735 Green Road | Beachwood, OH 44122 | US: 800.852.9068 | CAN: 800.363.3213 | tremcosealants.com

Tremco Construction Products Group (CPG) brings together Tremco Incorporated's Commercial Sealants & Waterproofing and Roofing & Building Maintenance operating divisions; Dryvit Systems, Inc.; Nudura Inc.; Willseal; Weatherproofing Technologies, Inc. and Weatherproofing Technologies Canada, Inc.



Construction Products Group

Tremco® and Vulkem® are registered trademarks of Tremco Incorporated. Use of the ® symbol indicates registration with the US Patent & Trademark Office and the Canadian Intellectual Property Office.

0421/VHTCS

tremcocpg.com