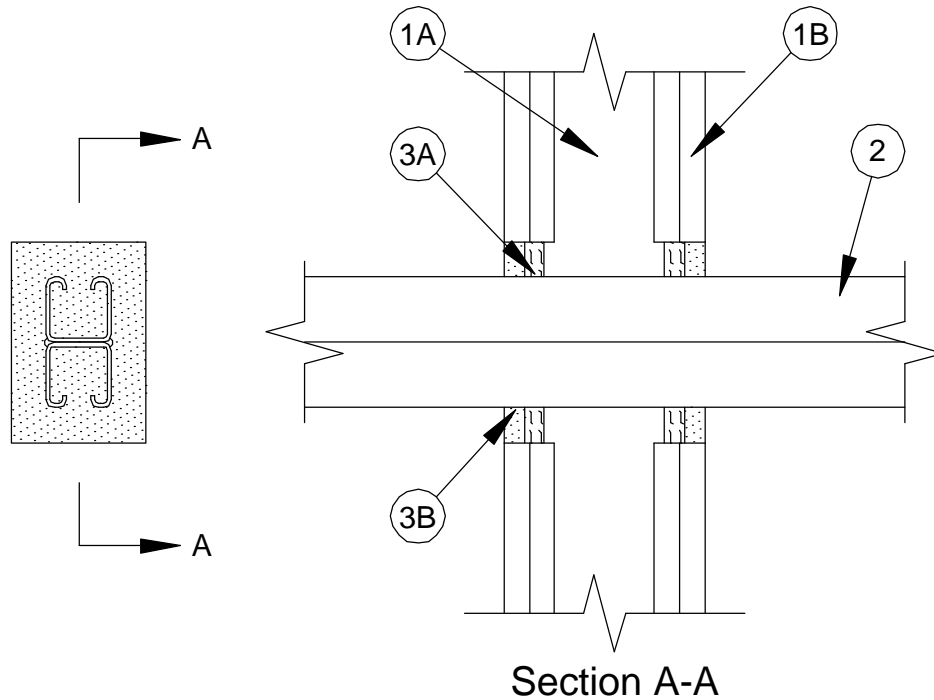


System No. W-L-7125

August 2008

F Ratings — 1 and 2 Hr (See Item 3)

T Rating — 0 Hr
(UL/cUL)



1. **Wall Assembly** — The 1 or 2 hr fire-rated gypsum board/stud wall assembly shall be constructed of the materials and in the manner specified in the individual U300, U400 or V400 Series Wall and Partition Designs in the UL Fire Resistance Directory and shall include the following construction features:
 - A. **Studs** — Wall framing may consist of either wood studs or steel channel studs. Wood studs to consist of nom 2 by 4 in. (51 by 102 mm) lumber spaced max 16 in. (406 mm) OC. Steel studs to be min 2-1/2 in. (64 mm) wide and spaced max 24 in. (610 mm) OC.
 - B. **Gypsum Board*** — One or two layers of gypsum board, as specified in the individual Wall and Partition Design. Max diam of opening is 3-3/8 in. (86 mm). Max area of rectangular opening is 16.5 sq in. (106 cm²) with max dimension of 5 in. (127 mm).
2. **Through Penetrants** — One metallic strut, cable or rod service support to be installed within the firestop system. An annular space of min 1/8 in. (3 mm) to max 7/8 in. (22 mm) is required within the firestop system. Strut, cable or rod to be rigidly supported on both sides of floor or wall assembly. The strut, cable or rod may be installed at an angle not greater than 45 degrees from the perpendicular. The following types and sizes of metallic strut, cable or rod may be used:
 - A. **Steel Strut** — Max 1-5/8 by 1-5/8 in. (41 by 41 mm) channel strut formed from min 0.105 in. (2.7 mm) thick galv or painted steel.
 - B. **Steel Strut** — Max 3-1/4 by 1-5/8 in. (83 by 41 mm) H strut formed from min 0.105 in. (2.7 mm) thick galv or painted steel.
 - C. **Cable** — Max 3/8 in. (9.5 mm) diam unjacketed galv steel cable.
 - D. **Threaded Rod** — Max 5/8 in. (16 mm) diam galv steel threaded rod.
3. **Firestop System** — The firestop system shall consist of the following:
 - A. **Packing Material** — (See Table below) - Min 1/2 in. (13 mm) thickness of min 4 pcf (64 kg/m³) mineral wool batt insulation firmly packed into opening as a permanent form. Packing material to be located between penetrant and periphery of opening, and within channels of struts. Packing material to be recessed from both surfaces of wall to accommodate the required thickness of fill material.

- B. **Fill, Void or Cavity Material* - Sealant** — Min 1/2 in. (13 mm) thickness of fill material applied within the annulus and within the channel struts, flush with both surfaces of wall. See Table below.

TREMCO INC — Fyre Sil, TREMstop Acrylic, TREMstop Intumescent Acrylic, Fyre-Caulk or TREMstop IA+

The F Rating for the System is dependent upon the use of packing material and the type of sealant used as indicated in the Table below.

F Rating	Packing Material	Sealant
1	No	IA, FyreCaulk, IA+
2	No	IA, FyreCaulk, IA+
2	Yes	FS, A, IA, FyreCaulk, or IA+

IA - TREMstop Intumescent Acrylic, A - TREMstop Acrylic, FS - Fyre Sil, IA+ - TREMstop IA+

*Bearing the UL Classification Mark



Reprinted from the Online Certifications Directory with permission from Underwriters Laboratories Inc.
Copyright © 2008 Underwriters Laboratories Inc. ®