

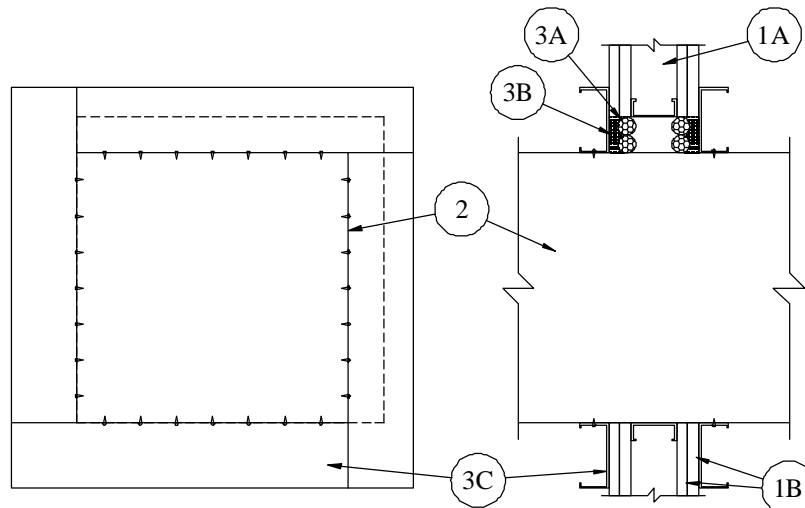
System No. W-L-7113

August 2008

F Rating — 1 and 2 Hr (See Item 1)

T Rating — 0 Hr

L Rating at Ambient - Less Than 1 CFM/sq ft
(UL/cUL)



1. **Wall Assembly** — The 1 or 2 hr fire-rated gypsum board/stud wall assembly shall be constructed of the materials and in the manner specified in the individual U400 Series Wall and Partition Designs in the UL Fire Resistance Directory and shall include the following construction features:
 - A. **Studs** — Wall framing shall consist of steel channel studs. Steel studs to be min 2-1/2 in. wide and spaced max 24 in. OC. Additional framing members shall be used to completely frame around opening.
 - B. **Gypsum Board*** — Min 5/8 in. thick, 4 ft wide gypsum board. The gypsum board type, thickness, number of layers and orientation shall be as specified in the individual U400 Wall and Partition Design. Max size of opening is 992 sq in. with a max dimension of 32 in.

The hourly F Rating of the firestop system is equal to the hourly fire rating of the wall in which it is installed.

2. **Steel Duct** — Nom 30 in. by 30 in. (or smaller) No. 24 gauge (or heavier) galv steel duct to be installed either concentrically or eccentrically within the firestop system. The space between the steel duct and periphery of opening shall be min 0 in. (point contact) to max 2 in. Steel duct to be rigidly supported on both sides of the wall assembly
3. **Firestop System** — The firestop system shall consist of the following:
 - A. **Packing Material** — (Optional) — Foam backer rod friction fit into annular space for 2 hr fire-rated wall assemblies only. Packing material to be recessed from both surfaces of wall as required to accommodate the required thickness of fill material.
 - B. **Fill, Void or Cavity Material*** — Min 5/8 in. thickness of fill material applied within the annulus, flush with both surfaces of wall. At the point contact locations between steel duct and gypsum board, a min 3/8 in. diam bead of fill material shall be applied at the gypsum board/steel duct interface on both surfaces of wall assembly.
4. **TREMCO INC** — TREMstop Intumescent Acrylic, TREMstop Acrylic, Fyre-Sil, Fyre-Caulk or TREMstop IA+
 - A. **Steel Retaining Channels** — Min 3-5/8 in. by 1-1/4 in. by No. 30 gauge galv steel channels. Channels attached to all four sides of steel duct on both faces of wall with min No. 10 steel sheet metal screws spaced a max of 1 in. from each end of steel duct and spaced a max 3-1/2 in. OC. Channels to lap wall min of 1-5/8 in. around periphery of opening on both faces of wall. When steel duct size does not exceed 15 by 15 in., and max annular space does not exceed 1/2 in., channels are required on one face of wall only.

*Bearing the UL Classification Mark



Reprinted from the Online Certifications Directory with permission from Underwriters Laboratories Inc.
Copyright © 2008 Underwriters Laboratories Inc. ®

Tremco Commercial Sealants & Waterproofing

3735 Green Road, Beachwood, OH 44122 // Phone: 216.292.5000 // 800.321.7906
220 Wicksteed Avenue, Toronto, ON M4H 1G7 // Phone: 416.421.3300 // 800.363.3213
1451 Jacobson Avenue, Ashland OH 44805 // Phone: 419.289.2050 // 800.321.6357



Reprinted from the Online Certifications Directory with permission from Underwriters Laboratories Inc.
Copyright © 2008 Underwriters Laboratories Inc. ®