

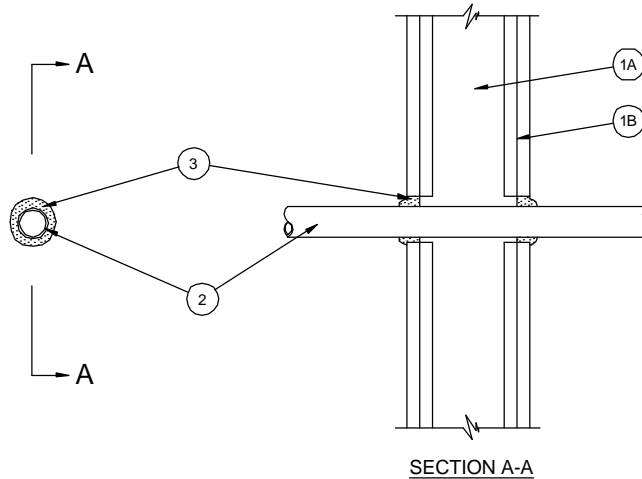
System No. W-L-2420

August 2008

F Ratings — 1 and 2 Hr (See Item 1)

T Ratings — 0, 1-3/4 and 2 Hr (See Items 1 and 3)

L Rating at Ambient - Less Than 1 CFM/sq ft
(UL/cUL)



- Wall Assembly** — The 1 and 2 hr fire rated gypsum board/stud wall assemblies shall be constructed of the materials and in the manner specified in the individual U300, U400 or V400 Series Wall and Partition Designs in the UL Fire Resistance Directory and shall include the following construction features:

- Studs** — Wall framing may consist of either wood studs or steel channel studs. Wood studs to consist of nom 2 by 4 in. (51 by 102 mm) lumber spaced 16 in. (406 mm) OC. Steel studs to be min 2-1/2 in. (64 mm) wide and spaced max 24 in. (610 mm) OC.
- Gypsum Board*** — 5/8 in. (16 mm) thick, 4 ft. (122 cm) wide with square or tapered edges. Thickness, type, number of layers and fasteners as required in the individual Wall and Partition Design. Max diam of opening is 2-11/16 in. (68 mm).

The hourly F Rating of the firestop system is equal to the hourly fire rating of the wall assembly in which it is installed. The T Rating is 0 hr for 1 hr rated walls and 1-3/4 hr or 2 hr (see Item 3) for 2 hr rated walls.

- Through Penetrants** — One nonmetallic pipe to be installed within the firestop system. The annular space between the pipe and periphery of opening shall be min of 1/4 in. (6 mm) to max 1/2 in. (13 mm). Pipe to be rigidly supported on both sides of wall assembly. The following types and sizes of nonmetallic pipes may be used:
 - Polyvinyl Chloride (PVC) Pipe** — Nom 1-1/2 in. (38 mm) diam (or smaller) Schedule 40 solid core or cellular core PVC pipe for use in closed (process or supply) piping systems. Cellular core PVC pipe is limited to use with the TREMstop Putty fill material only (Item 3).
 - Chlorinated Polyvinyl Chloride (CPVC) Pipe** — Nom 1-1/2 in. (38 mm) diam (or smaller) SDR13.5 CPVC pipe for use in closed (process or supply) piping systems.
- Fill, Void or Cavity Materials*** - Min 5/8 in. (16 mm) thickness of fill material applied within annulus, flush with both surfaces of wall assembly. Additional fill material to be installed such that a min 3/8 in. (10 mm) thick crown is formed around the pipe on both sides of wall.

TREMCO INC — TREMstop Acrylic, TREMstop Intumescent Acrylic, TREMstop Putty, FyreCaulk, or TREMstop IA+

For 2 hr rated walls, the T Rating is 1-3/4 hr, except that the T Rating is 2 hr when the TREMstop Putty fill material is used.

*Bearing the UL Classification Mark



Reprinted from the Online Certifications Directory with permission from Underwriters Laboratories Inc.
Copyright © 2008 Underwriters Laboratories Inc. ®