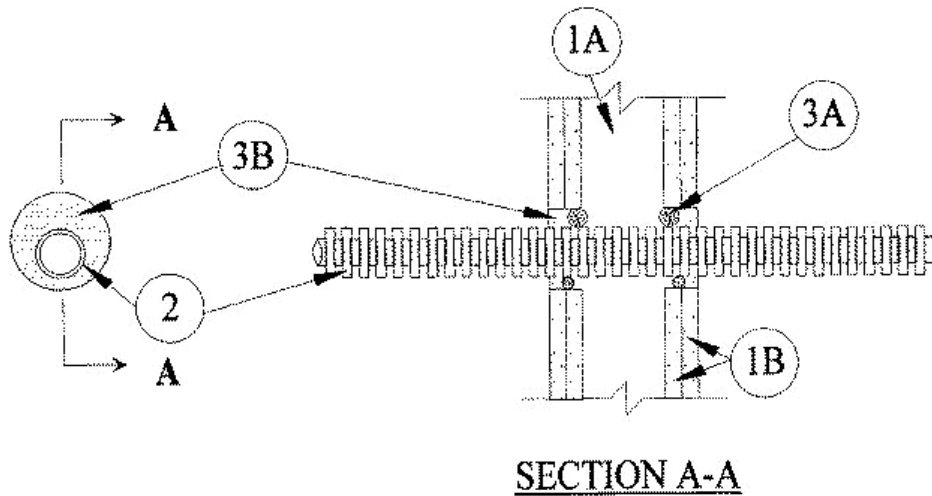


System No. W-L-2158

August 2008

F Ratings — 1&2 Hr (See Item 1)

T Ratings — 3/4, 1, 1-1/2 & 1-3/4 Hr (See Item 2)
(UL/cUL)



1. **Wall Assembly** The 1 or 2 hr fire-rated Gypsum wallboard/stud wall assembly shall be constructed of the materials and in the manner specified in the individual U300 or U400 Series Wall and Partition Designs in the UL Fire Resistance Directory and shall include the following construction features:
 - A. **Studs** Wall framing may consist of either wood studs or steel channel studs. Wood studs to consist of nom 2 by 4 in. lumber spaced 16 in. OC. Steel studs to be min 2-1/2 in. wide and spaced max 24 in. OC.
 - B. **Gypsum Board*** One or two layers of nom 1/2 or 5/8 in. thick Gypsum wallboard as specified in the individual Wall and Partition Design. Max diam of opening is 1-11/16 in.

The hourly F Rating of the firestop system is equal to the hourly fire rating of the wall assembly in which it is installed.
2. **Through Penetrants** One nonmetallic tube to be installed either concentrically or eccentrically within the firestop system. The annular space shall be min 1/4 in. to max 3/8 in. Tube to be rigidly supported on both sides of wall assembly. The following types and sizes of nonmetallic tubes may be used:
 - A. **Crosslinked Polyethylene (PEX) Tube** Nom 3/4 in. diam (or smaller) SDR 9 PEX tubing for use in closed (process or supply) piping systems.
 - B. **Electrical Nonmetallic Tubing+** Nom 1 in. diam (or smaller) corrugated wall electrical nonmetallic tubing (ENT) constructed of polyvinyl chloride. ENT to be installed as a complete system with all terminations in junction boxes, outlet boxes or other approved enclosures as specified in the National Electric Code.

See **Electrical Nonmetallic Tubing (FKHU)** category in the Electrical Construction Materials Directory for names of manufacturers.

The hourly T Rating is dependent on the hourly rating of the wall assembly and the type of tube as shown in the following table:

Type of Tube	Wall Assembly Rating Hr	T Rating Hr
PEX	1	1
PEX	2	1-1/2
ENT	1	3/4
ENT	2	1-3/4

3. **Firestop System** The firestop system shall consist of the following:
- A. **Packing Material** (Optional) — In 2 hr wall assemblies, foam backer rod firmly packed into opening as a permanent form. Packing material to be recessed from both surfaces of wall as required to accommodate the required thickness of fill material.
 - B. **Fill, Void or Cavity Material* — Caulk** Min 1/2 in. thickness of fill material applied within the annulus, flush with both surfaces of wall.
- TREMCO INC** — TREMstop Intumescent Acrylic, FyreCaulk, or TREMstop IA+

+Bearing the UL Listing Mark

*Bearing the UL Classification Mark



Reprinted from the Online Certifications Directory with permission from Underwriters Laboratories Inc.
Copyright © 2008 Underwriters Laboratories Inc. ®