

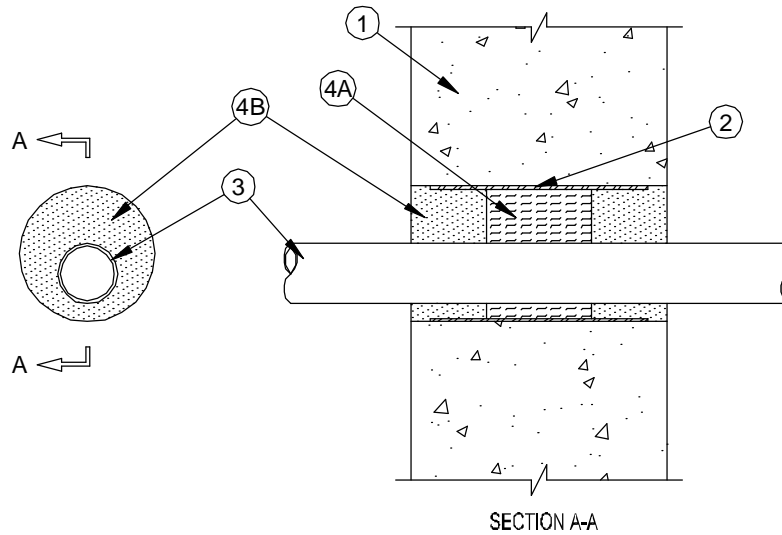
System No. W-J-2168

August 2008

F Rating — 4 Hr

T Rating — 0 Hr

L Rating at Ambient - Less Than 1 CFM/sq ft
(UL/cUL)



1. **Wall Assembly** — Min 5-5/8 in. (143 mm) thick lightweight or normal weight (100-150 (1600-2400 kg/cu meter)) concrete wall assembly. Wall may also be constructed of any UL Classified **Concrete Blocks***. Max diam of opening is 4-1/2 in. (114 mm).
See **Concrete Blocks** (CAZT) category in the Fire Resistance Directory for names of manufacturers.
2. **Steel Sleeve** — (Optional) Cylindrical sleeve fabricated from min 0.013 in. (0.330 mm) thick (No. 30 gauge) galv steel sheet and having a min 2 in. (51 mm) lap along the longitudinal seam. Length of sleeve to be nom 1 in. (25 mm) less than thickness of wall. Sleeve to be installed by coiling the sheet metal to a diam smaller than the through opening, inserting the coil through the opening and releasing the coil to let it uncoil against the opening in the wall. Sleeve to be centered within thickness of wall.
3. **Through Penetrants** — One nonmetallic pipe to be installed within the opening. The annular space between the through penetrant and periphery of the opening shall be min 1/2 in. (13 mm) to max 1-5/8 in. (41 mm). Pipe to be rigidly supported on both sides of wall assembly. The following types and sizes of pipes may be used:
 - A. **Polyvinyl Chloride (PVC) Pipe** — Nom 2 in. (51 mm) diam (or smaller) Schedule 40 cellular or solid core PVC pipe for use in closed (process or supply) or vented (drain, waste or vent) piping systems.
 - B. **Acrylonitrile Butadiene Styrene (ABS) Pipe** — Nom 2 in. (51 mm) diam Schedule 40 cellular or solid core ABS pipe for use in closed (process or supply) or vented (drain, waste or vent) piping systems.
 - C. **Chlorinated Polyvinyl Chloride (CPVC) Pipe** — Nom 2 in. (51 mm) diam (or smaller) SDR 13.5 CPVC pipe for use in closed (process or supply) piping systems.
4. **Firestop System** — The firestop system shall consist of the following:
 - A. **Packing Material** — Min 1-5/8 in. (41 mm) thickness of min 4 pcf (64 kg/cu meter) mineral wool batt insulation firmly packed into the opening as a permanent form. Packing material to be recessed from both surfaces of wall as required to accommodate the required thickness of fill material.
 - B. **Fill, Void or Cavity Material*** — Min 2 in. (51 mm) thickness of fill material applied within the annular space, flush with both surfaces of wall.

TREMCO INC — TREMstop Intumescent Acrylic, TREMstop IA+

*Bearing the UL Classification Mark



Reprinted from the Online Certifications Directory with permission from Underwriters Laboratories Inc.
Copyright © 2008 Underwriters Laboratories Inc. ®

Tremco Commercial Sealants & Waterproofing

3735 Green Road, Beachwood, OH 44122 // Phone: 216.292.5000 // 800.321.7906
220 Wicksteed Avenue, Toronto, ON M4H 1G7 // Phone: 416.421.3300 // 800.363.3213
1451 Jacobson Avenue, Ashland OH 44805 // Phone: 419.289.2050 // 800.321.6357