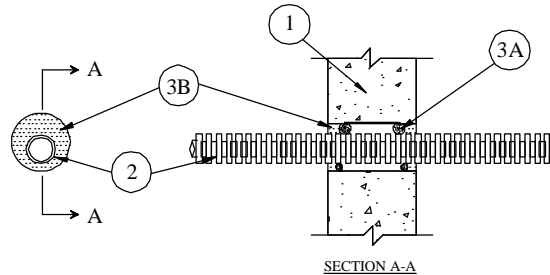


## System No. W-J-2134

August 2008

F Rating — 1 & 2 Hr (See Item 1)

T Rating — 3/4, 1, 1-1/2 & 1-3/4 Hr (See Item 2)  
(UL/cUL)



- Wall Assembly.** — Min 5 in. (127 mm) or 6 in. (152 mm) thick reinforced lightweight or normal weight (100-150 pcf (1601-2402 kg/m<sup>3</sup>) concrete for 1 hr or 2 hr F Rating respectively. Wall may also be constructed of any UL Classified **Concrete Blocks\***. Max diam of opening is 1-11/16 in.

See **Concrete Blocks** (CAZT) category in the Fire Resistance Directory for names of manufacturers.

- Through Penetrants.** — One nonmetallic tube to be installed either concentrically or eccentrically within the firestop system. The annular space shall be min 1/4 in. (6 mm) to max 3/8 in. (10 mm) Tube to be rigidly supported on both sides of wall assembly. The following types and sizes of nonmetallic tubes may be used:

- Crosslinked Polyethylene (PEX) Tube.** — Nom 3/4 in. (19 mm) diam (or smaller) SDR 9 PEX tubing for use in closed (process or supply) piping systems.
- Electrical Nonmetallic Tubing+.** — Nom 1 in. (25 mm) diam (or smaller) corrugated wall electrical nonmetallic tubing (ENT) constructed of polyvinyl chloride. ENT to be installed as a complete system with all terminations in junction boxes, outlet boxes or other approved enclosures as specified in the National Electric Code.

See **Electrical Nonmetallic Tubing** (FKHU) category in the Electrical Construction Materials Directory for names of manufacturers.

The hourly T Rating is dependent on the hourly rating of the wall assembly and the type of tube as shown in the following table:

Type of Tube	Wall Assembly Rating Hr	T Rating Hr
PEX	1	1
PEX	2	1-1/2
ENT	1	3/4
ENT	2	1-3/4

- Firestop System.** — The firestop system shall consist of the following:

- Packing Material (Optional).** — In 2 hr wall assemblies, foam backer rod firmly packed into opening as a permanent form. Packing material to be recessed from both surfaces of wall as required to accommodate the required thickness of fill material.
- Fill, Void or Cavity Material\* — Caulk.** — Min 1/2 in. (12 mm) thickness of fill material applied within the annulus, flush with both surfaces of wall.

**TREMCO INC** — TREMstop Intumescent Acrylic, FyreCaulk, or TREMstop IA+

\*Bearing the UL Classification Mark



Reprinted from the Online Certifications Directory with permission from Underwriters Laboratories Inc.  
Copyright © 2008 Underwriters Laboratories Inc. ®