

System No. HW-D-1052

March 10, 2017

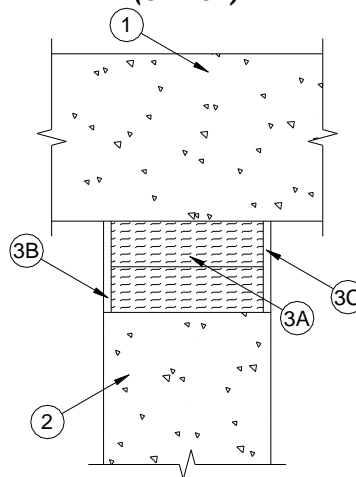
Assembly Rating - 3 Hr

L Rating at Ambient - Less than 1 CFM/Lin Ft

L Rating at 400° F - Less than 1 CFM/Lin Ft

Nominal Joint Width - 3-1/2 In.

Class II and III Movement Capabilities - 14 % Compression or Extension
(UL/cUL)



1. **Floor Assembly** – Min 5-1/2 in. (140 mm) thick reinforced lightweight or normal weight (100-150 pcf or 1600-2400 kg/m³) structural concrete.
2. **Wall Assembly** – Min 5-1/2 in. (140 mm) thick reinforced lightweight or normal weight (100-150 pcf or 1600-2400 kg/m³) structural concrete. Wall may also be constructed of any UL Classified **Concrete Blocks***.
3. **Joint System** – Max width of joint (at time of installation of joint system) is 3-1/2 in. (89 mm). The joint system is designed to accommodate a max 14 percent compression or extension from its installed width. The joint system shall consist of the following:

See **Concrete Blocks (CAZT)** category in the Fire Resistance Directory for names of manufacturers.

- A. **Forming Material*** – Min 4 pcf (64 kg/m³) mineral wool batt insulation installed in joint opening as a permanent form. Pieces of batt cut to min width of 5 in. (127 mm) and installed edge-first into joint opening, parallel with joint direction, such that batt sections are compressed min 56 percent in thickness and that the compressed batt sections are recessed from both surfaces of the wall as required to accommodate the required thickness of fill material. Adjoining lengths of batt to be tightly-butted with butted seams spaced min 36 in. (914 mm) apart along the length of the joint.

FIBREX INSULATIONS INC – FBX Safing Insulation

ROCK WOOL MANUFACTURING CO – Delta Board

- B. **Fill, Void or Cavity Material*** – Min 1/4 in. (6 mm) thickness of fill material applied within the joint, flush with exterior side of wall.

TREMCO INC – Dymeric 240FC

- C. **Fill, Void or Cavity Material*** – When Fyre-Sil or Dymeric 240FC is used, min 1/4 in. (6 mm) thickness of fill material applied within the joint, flush with interior side of wall. When TREMstop Acrylic SP is used, min 1/8 in. (3 mm) (wet) thickness of fill material spray or brush applied to completely cover bottom surface of mineral wool and to lap min 1 in. (25 mm) onto each edge of concrete.

TREMCO INC – Fyre-Sil, TREMstop Acrylic SP or Dymeric 240FC

*Bearing the UL Classification Mark



Reprinted from the Online Certifications Directory with permission from Underwriters Laboratories Inc. Copyright © 2019 Underwriters Laboratories Inc. ®

Tremco Commercial Sealants & Waterproofing

3735 Green Rd
Beachwood OH 44122
216.292.5000 / 800.321.7906

1451 Jacobson Ave
Ashland OH 44805
419.289.2050 /
800.321.6357

220 Wicksteed Ave
Toronto ON M4H1G7
416.421.3300 /
800.363.3213

1445 Rue de Coulomb
Boucherville QC J4B 7L8
514.521.9555