

System No. FF-S-1030

February 24, 2005

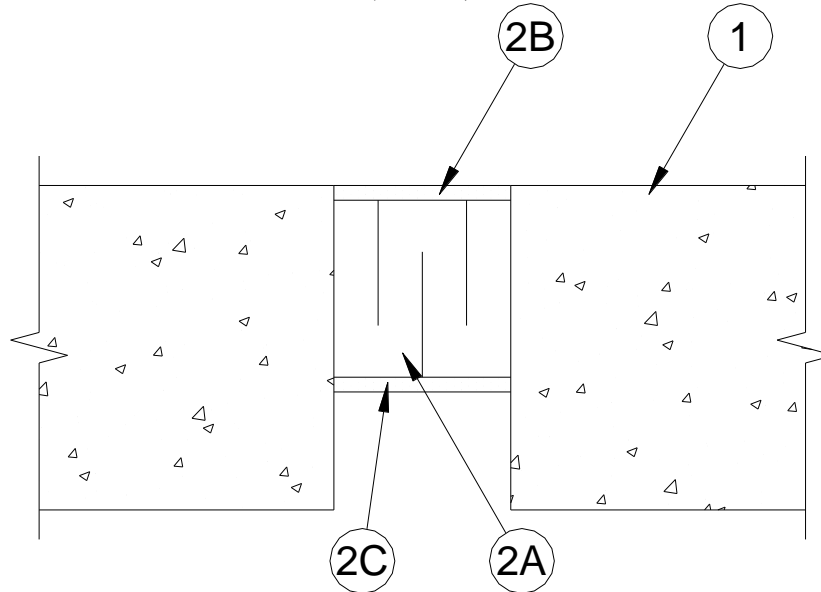
Assembly Rating - 4 Hr

L Rating at Ambient - Less than 1 CFM/Lin Ft

L Rating at 400° F - Less than 1 CFM/Lin Ft

Joint Width - 3 In. Max

(UL/cUL)



1. **Floor Assembly** – Min 5-1/2 in. (140 mm) thick reinforced lightweight or normal weight (100-150 pcf or 1600-2400 kg/m³) structural concrete.
2. **Joint System** – Max width of joint is 3 in. (76 mm). The joint system shall consist of the following:
 - A. **Forming Material*** – Min 1 in. (25 mm) thick 6.0 pcf (96 kg/m³) ceramic fiber blanket insulation installed in joint opening as a permanent form. Insulation cut and pleated to form a unit min 3 in. (76 mm) deep and installed edge-first into joint opening such that sections of insulation unit are compressed a min of 50 percent. Ceramic blanket to be recessed from top surface of floor to accommodate the required thickness of fill material. Adjoining lengths of insulation to be tightly-butted with butted seams spaced min 36 in. (914 mm) apart along the length of the joint.

TREMCO INC – TREMstop FS Blanket
 - B. **Fill, Void or Cavity Material*** – Min 1/2 in. (13 mm) thickness of fill material applied within the joint, flush with top surface of floor.

TREMCO INC – Dymeric 240FC
 - C. **Fill, Void or Cavity Material*** – (Optional) - When Fyre-Sil, TREMstop Acrylic or Dymeric 240FC is used, min 1/4 in. (6 mm) thickness of fill material applied to bottom surface of ceramic fiber insulation. When TREMstop Acrylic SP is used, min 1/8 in. (3 mm) (wet) thickness of fill material spray or brush applied to completely cover bottom surface of ceramic fiber insulation and lap min 1 in. (25 mm) onto each edge of concrete.

TREMCO INC – Fyre-Sil, TREMstop Acrylic, TREMstop Acrylic SP or Dymeric 240FC

*Bearing the UL Classification Mark



Reprinted from the Online Certifications Directory with permission from Underwriters Laboratories Inc. Copyright © 2019 Underwriters Laboratories Inc. ®

Tremco Commercial Sealants & Waterproofing

3735 Green Rd
Beachwood OH 44122
216.292.5000 / 800.321.7906

1451 Jacobson Ave
Ashland OH 44805
419.289.2050 /
800.321.6357

220 Wicksteed Ave
Toronto ON M4H1G7
416.421.3300 /
800.363.3213

1445 Rue de Coulomb
Boucherville QC J4B 7L8
514.521.9555