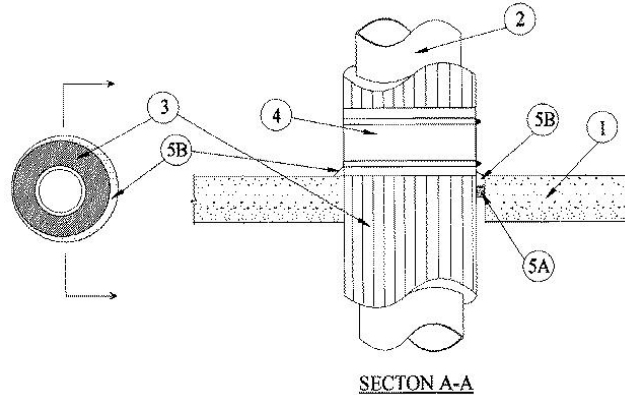


System No. C-AJ-5120

August 2008
F Rating – 2 Hr
T Rating – 1-1/2 Hr
(UL/cUL)



1. **Floor or Wall Assembly** Min 4-1/2 in. thick reinforced lightweight or normal weight (100-150 pcf) concrete. Wall may also be constructed of any UL Classified **Concrete Blocks***. Max Diam of opening is 16 in.
See **Concrete Blocks** (CAZT) category in the Fire Resistance Directory for names of manufacturers.
2. **Through Penetrants** – One metallic pipe to be installed either concentrically or eccentrically within the firestop system. Pipe to be rigidly supported on both sides of floor or wall assembly. The following types and sizes of metallic pipes may be used:
 - A. **Steel Pipe** Nom 8 in. diam (or smaller) Schedule 10 (or heavier) steel pipe.
 - B. **Iron Pipe** Nom 8 in. diam (or smaller) cast or ductile iron pipe.
3. **Pipe Covering Materials* – Cellular Glass Insulation** Nom 3 in. thick cellular glass units sized to the outside diam of the through penetrant and supplied in nom 24 in. long half sections or nom 18 in. long segments. Pipe insulation installed in accordance with the manufacturer's instructions. The annular space between the insulated pipe and periphery of opening shall be min 0 in. to max 1-3/8 in.
PITTSBURGH CORNING CORP – FOAMGLAS
4. **Metal Jacket** Min 10 in. long jacket of min 0.010 in. thick aluminum or steel sheet cut to wrap tightly around the pipe insulation with a min 2 in. lap and secured using two min 1/2 in. stainless steel hose clamps. Hose clamps to be located within 2 in. of each end of the jacket and spaced max 8 in. OC. Jacket to be installed with edge abutting surface of caulk fill material (Item 5B) on the top surface of floor or both surfaces of wall. Metal jacket to be used in addition to any other jacketing material which may be required or desired on the pipe insulation.
5. **Firestop System** The firestop system shall consist of the following:
 - A. **Packing Material** (Optional) – Foam backer rod firmly packed into the opening as a permanent form. Packing material to be recessed from top surface of floor or from both surfaces of wall as required to accommodate the required thickness of fill material.
 - B. **Fill, Void or Cavity Material* – Caulk** Min 1 in. thickness of fill material applied within the annulus, flush with top surface of floor or with both surfaces of wall. At the point contact location between pipe covering material and concrete, a min 1/2 in. diam bead of fill material shall be applied at the concrete/pipe covering material interface on the top surface of floor and on both surfaces of wall.

TREMCO INC – TREMstop Intumescent Acrylic, FyreCaulk, or TREMstop IA+

*Bearing the UL Classification Marking



Reprinted from the Online Certifications Directory with permission from Underwriters Laboratories Inc.
Copyright © 2008 Underwriters Laboratories Inc. ®