

## System No. C-AJ-1515

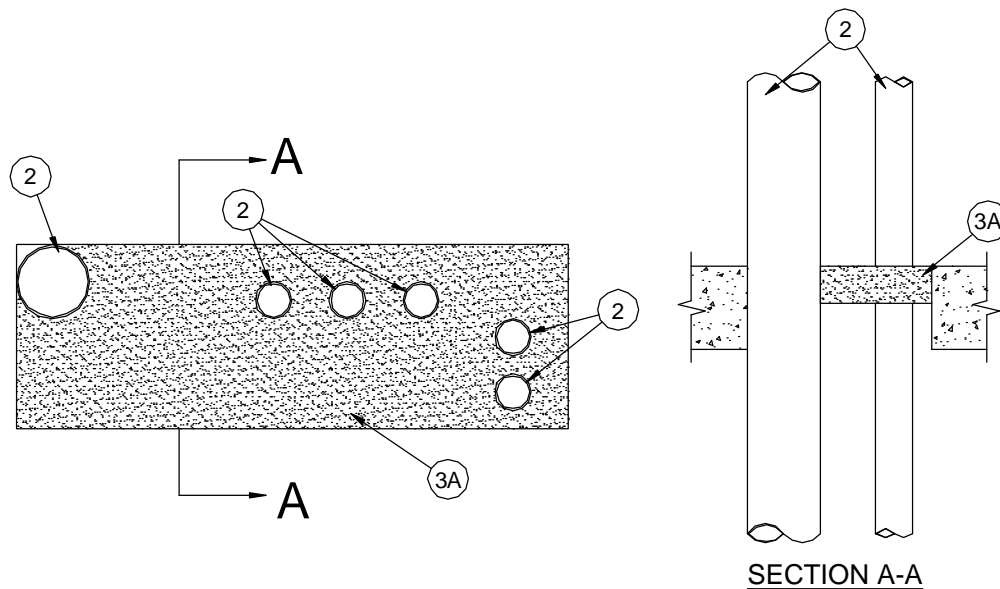
August 2008

F Rating — 3 Hr

T Rating — 0 Hr

L Rating at Ambient - Less Than 1 CFM/sq ft

L Rating at 400F - Less Than 1 CFM/sq ft  
(UL/cUL)



- Floor or Wall Assembly** — Min 4-1/2 in. (114 mm) thick reinforced lightweight or normal weight (100-150 pcf (1600-2400 kg/cu meter)) structural concrete. Wall may also be constructed of any UL Classified **Concrete Blocks\***. Max area of opening is 300 sq in. (1935 sq cm) with max dimension of 30 in. (762 mm).

See **Concrete Block** (CAZT) category in the Fire Resistance Directory for names of manufacturers.
- Through-Penetrants** — A max of six pipes, conduits or tubing to be installed within the opening. Of the six penetrants, only one penetrant shall have a nom diam greater than 2 in. (51 mm). The min space between pipes, conduits or tubing shall be 1 in. (25 mm), except that for metallic pipes greater than nom 2 in. (51 mm) diam, the min space shall be 3 in. (76 mm). The max space between pipes, conduits or tubing shall be 8-7/8 in. (225 mm). The annular space between pipes, conduits or tubing and periphery of opening shall be min 0 in. (point contact) to max 5-5/8 in. (143 mm). Pipe, conduit or tubing to be rigidly supported on both sides of floor or wall assembly. The following types and sizes of pipes, conduits or tubing may be used:
  - Steel Pipe** — Nom 8 in. (203 mm) diam (or smaller) Schedule 10 (or heavier) steel pipe.
  - Iron Pipe** — Nom 8 in. (203 mm) diam (or smaller) cast or ductile iron pipe.
  - Conduit** — Nom 4 in. (102 mm) diam (or smaller) steel electrical metallic tubing or rigid steel conduit.
  - Copper Tubing** — Nom 4 in. (102 mm) diam (or smaller) Type L (or heavier) copper tubing.
  - Copper Pipe** — Nom 4 in. (102 mm) diam (or smaller) Regular (or heavier) copper pipe.
- Firestop System** — The firestop system consists of the following items:
  - Fill, Void or Cavity Material\* — Mortar** — Min 2 in. (51 mm) thickness of fill material applied within the annulus, flush with top surface of floor. For walls, min 1 in. thickness of fill material applied within annulus, flush with both surfaces of wall.

**TREMCO INC** — TREMstop Fire Mortar
  - Forms - (Not Shown)** — Used as a form to prevent leakage of fill material during installation. Forms to be 2-1/2 in. (64 mm) thick mineral wool batt insulation, cut to fit the contour of the penetrating items and positioned as required to accommodate the required thickness of fill material. In floors, forms may be removed after fill material cured.

- C. **Packing Material - (Not Shown)** — Required in corners of opening where pipe is installed with point contact at both edges of opening. Min 1 in. (25 mm) thickness of min 4 pcf (64 kg/cu meter) mineral wool batt insulation firmly packed into corner of opening as a permanent form. Packing material to be recessed from top surface of floor or both surfaces of wall as required to accommodate the required thickness of fill material (Item 3D).
- D. **Fill, Void or Cavity Material\* - (Not Shown)** — Used in conjunction with Item 3C. Min 1 in. (25 mm) thickness of fill material applied within the annulus at corner of opening, flush with top surface of floor or both surfaces of wall.

**TREMCO INC** — TREMstop Intumescent Acrylic or TREMstop IA+

\*Bearing the UL Classification Mark



Reprinted from the Online Certifications Directory with permission from Underwriters Laboratories Inc.  
Copyright © 2008 Underwriters Laboratories Inc. ®