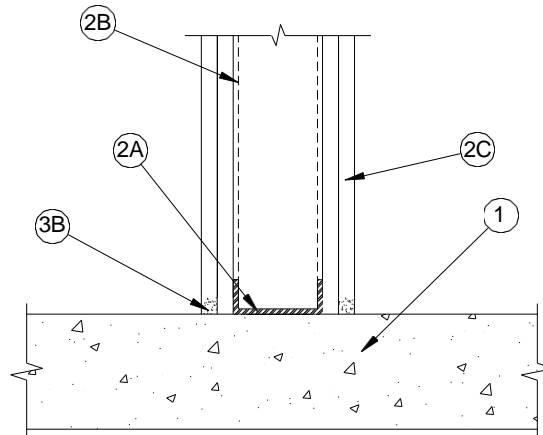


## System No. BW-S-0006

March 2017

Assembly Ratings — 1 and 2 Hr (See Item 2)  
Joint Width — 1 In. (25 mm) Max  
(UL/cUL)



1. **Floor Assembly** — Min 4-1/2 in. (114 mm) thick reinforced lightweight or normal weight (100 -150 pcf (1600-2400 kg/cu meter)) structural concrete. Floor may also be constructed of any 6 in. (152 mm) thick UL Classified hollow-core Precast Concrete Units\*.

See Precast Concrete Units category in the Fire Resistance Directory for names of manufacturers.

2. **Wall Assembly** — The 1 or 2 h fire-rated gypsum board/steel stud wall assembly shall be constructed of the materials and in the manner specified in the individual U400 or V400 Series Wall or Partition Design in the UL Fire Resistance Directory. In addition, the wall may incorporate a head-of-wall joint system constructed as specified in the HW Series Joint Systems in the UL Fire Resistance Directory. The wall shall include the following construction features:
  - a. **Steel Floor Runner** — Floor runners of wall assembly shall consist of min No. 25 gauge galv steel channels sized to accommodate steel studs (Item 2B). Floor runners to be provided with min 1-1/4 in. (32 mm) flanges. Runners secured with steel fasteners spaced 12 in. (305 mm) OC.
  - b. **Studs** — Steel studs to be min 2-1/2 in. (64 mm) wide. Studs cut 1/2 to 3/4 in. (13 to 19 mm) less in length than assembly height with bottom nesting in, resting on and fastened to floor runner with sheet metal screws. Stud spacing not to exceed 24 in. (610 mm) OC.
  - c. **Gypsum Board\*** — Gypsum board installed to a min total thickness of 5/8 in. (16 mm) or 1-1/4 in. (32 mm) on each side of wall for a 1 or 2 hr rated wall, respectively. Wall to be constructed as specified in the individual U400 or V400 Series Design in the UL Fire Resistance Directory except that a max 1 in. (25 mm) gap shall be maintained between the bottom of the gypsum board and the top of the concrete floor.

The hourly fire rating of the joint system is equal to the hourly fire rating of the wall.

3. **Joint System** — Max separation between top of floor and bottom of gypsum board is 1 in. (25 mm). The joint system consists of a packing material and a fill material, as follows:
  - a. **Packing Material** — (Optional, Not Shown) - Foam backer rod firmly packed into the gap between the bottom of the gypsum board and the top of the concrete floor and recessed from each surface of the wall to accommodate the required thickness of fill material.
  - b. **Fill, Void or Cavity Material\*-Sealant** — Min 1/2 in. (13 mm) thickness of fill material installed on each side of the wall between the bottom of the gypsum board and the top of the concrete floor, flush with each surface of the wall.

TREMCO INC — TREMstop Acrylic, TREMstop Intumescent Acrylic (IA), TREMstop Silicone (Fyre-Sil), TREMstop IA+, or FyreCaulk, Dymonic 100

\* Indicates such products shall bear the UL or cUL Certification Mark for jurisdictions employing the UL or cUL Certification (such as Canada), respectively.



Reprinted from the Online Certifications Directory with permission from Underwriters Laboratories Inc.  
Copyright © 2017 Underwriters Laboratories Inc. ®

**Tremco Commercial Sealants & Waterproofing**

3735 Green Road, Beachwood, OH 44122 // Phone: 216.292.5000 // 800.321.7906  
220 Wicksteed Avenue, Toronto, ON M4H 1G7 // Phone: 416.421.3300 // 800.363.3213  
1451 Jacobson Avenue, Ashland OH 44805 // Phone: 419.289.2050 // 800.321.6357

[www.tremcosealants.com](http://www.tremcosealants.com)