

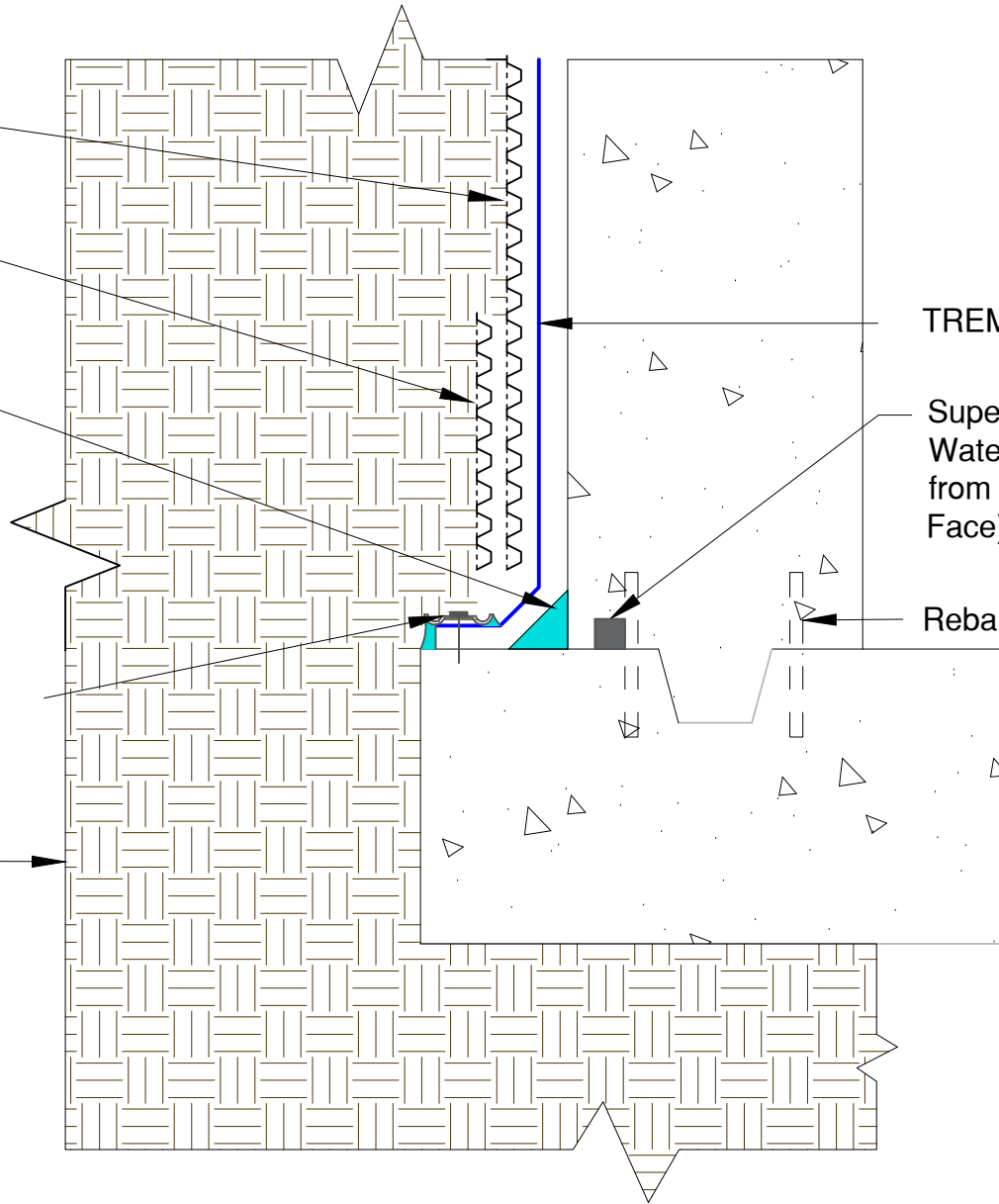
Approved TREMDrain

TREMDrain Total Drain as specified

Dymonic 100 Cant Bead

Termination bar (If required) sealed with Termination Mastic

Earth



TREMProof 545/560

Superstop Waterstop (Min. 2" from Exterior Wall Face)

Rebar

NOTE: Protection course is not required in typical application. Contact your local Technical Services representative for more information.

**TREMCO**

www.tremcosealants.com

3735 Green Road \* Beachwood, OH 44122  
Phone : 866-209-2404 \* Fax: 216-766-5535

Project: XXXXX

Detail: TREMProof 500 series - Typical Below Grade Detail with drainage

This detail is intended for conceptual purposes only.

Drawn by: MI

Checked by: DM

Scale: None

Sheet Number:

Date: 1/11/2016

File Name:

XXXXX

Rev #

00