

Product Description

Proglaze® ETA System 3 consists of pre-engineered silicone materials used as the transition assembly. The system assembly is comprised of a silicone extrusion with a small dart, which is attached to the pressure bar mullion by inserting the dart into the metal race filled with Spectrem® 1 Silicone Sealant to ensure a durable connection and positive seal. The opposite edge of the extrusion will span onto the air and vapor barrier. Proglaze ETA System 3 is comprised of the following components:

- 1.) Silicone Rubber Extrusion (SRE): Extruded, 40 durometers, translucent silicone, with a lock-in dart that will fit a majority of pressure bar race conditions. The Silicone Extrusion is available in 4", 6" and 8" widths and is packaged in 50 linear feet coils. For physical properties refer to Tremco's translucent Silicone Extruded Sheet data sheet.
- 2.) Silicone Rubber Corners (SRC): Pre-molded, 40 durometers, translucent silicone, with a lock-in dart. Silicone Rubber Corners are supplied in left and right-hand mates.
- 3.) Spectrem 1 Silicone Sealant: High movement, ultra-low modulus sealant utilized as a compatible adhesive and wet seal. For physical properties refer to Tremco's Spectrem 1 data sheet.

Basic Uses

Proglaze ETA is a transition assembly for bridging continuously between the window and/or curtain wall openings and the adjacent air and vapor barrier materials. The system's design absorbs thermal movement and wind-loading stresses. The Proglaze ETA thin cross-section and low durometer allow the system to span and seal across irregular window geometries.

The translucent silicone material allows the installer and/or inspector to see through the gasket to verify the recommended amount of sealant is properly applied to ensure an effective seal is achieved, while the ribs of the gasket's design ensure a minimum sealant thickness.

The assembly is fully compatible with most window sealants and glazing materials and bonds to the face of ExoAir® 110, ExoAir 110AT, and ExoAir TWF and to the cured surface of ExoAir 130, ExoAir 230 and Securock ExoAir 430. Not intended as a seal to untested substrates.

Availability

Please contact our Customer Service Department in Beachwood, Ohio at 800-321-7906, or Toronto at 800-363-3213.

Applicable Standards

Proglaze ETA System 3 has been tested as a component of several wall assemblies meeting ASTM E2357, the Standard Test Method for Determining Air Leakage of Air Barrier Assemblies, and NFPA 285, the Standard Fire Test Method for Evaluation of Fire Propagation Characteristics of Exterior Non-Load-Bearing Wall Assemblies Containing Combustible Components.

Limitations

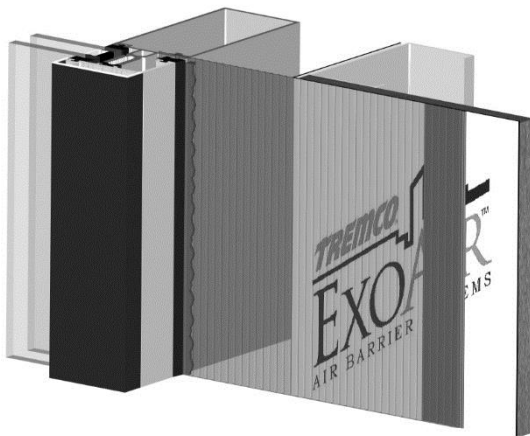
- Not intended to be utilized in a permanently exposed condition unless approved by Tremco.
- Not intended as a seal to untested substrates.

Warranty

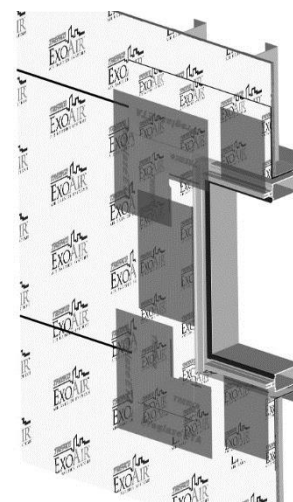
Tremco warrants its Products to be free of defects in materials but makes no warranty as to appearance or color. Since methods of application and on-site conditions are beyond our control and can affect performance, Tremco makes no other warranty, expressed or implied including warranties of MERCHANTABILITY and FITNESS FOR A PARTICULAR PURPOSE with respect to Tremco Products. Tremco's sole obligation shall be, at its option, to replace or refund the purchase price of the quantity of Tremco Products proven to be defective, and Tremco shall not be liable for any loss or damage.

Please refer to our website at www.tremcosealants.com for the most up-to-date Product Data Sheets.

NOTE: All Tremco Safety Data Sheets (SDS) are in alignment with the Globally Harmonized System of Classification and Labelling of Chemicals (GHS) requirements.



Proglaze ETA System 3 Assembly

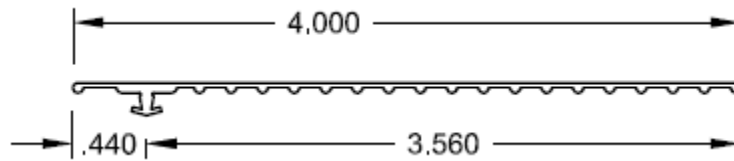


Typical System Assembly

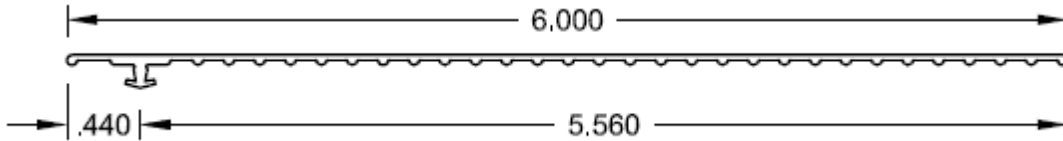
TYPICAL PHYSICAL PROPERTIES

| PROPERTY | TEST METHOD | TYPICAL RESULTS |
|--------------------------|---------------------|--|
| Uniform Static Pressure | ASTM E331 | No Leakage |
| Cyclic Static Pressure | ASTM E547 | No Leakage |
| Flame Spread | ASTM E 84 | 15 |
| Smoke Development | ASTM E 84 | 300 |
| Before Air Leakage | ASTM E 2357 | 77 Pa (1.60 psf) <0.01 cfm/ft² (<0.05 L/s/m²) |
| After Air Leakage | ASTM E 2357 | 300 Pa (6.27 psf) <0.01 cfm/ft² (<0.05 L/s/m²) |
| Uniform Load Deflection | ASTM E330 | No damage at ± 6699 Pa (± 140 psf) |
| Uniform Load Deflection2 | ASTM E330 | No damage at ± 10,049 Pa (± 210 psf) |
| Water Vapor Permeability | ASTM E 96 (Dry Cup) | 2.59 perms |

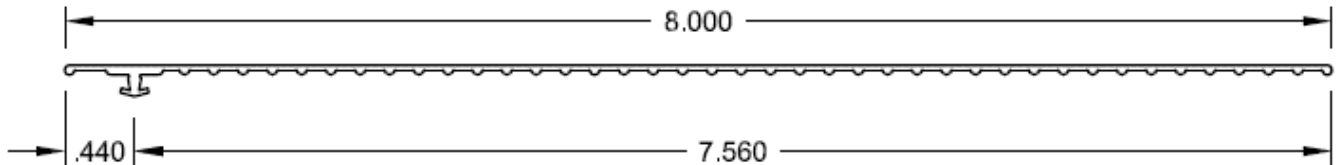
| SKU | Description | Width | FT/Case | Stock Class |
|-------------|--------------------------------------|-------|---------|-------------|
| ETA17285S4Z | ETA SYS3- 4" SNGL RIB LINEAL W/ DART | 4 | 50 | Standard |



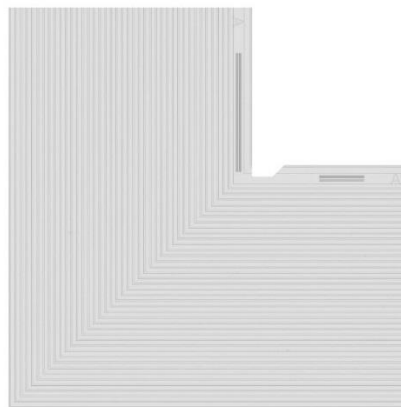
| SKU | Description | Width | FT/Case | Stock Class |
|-------------|--------------------------------------|-------|---------|-------------|
| ETA19186S4Z | ETA SYS3- 6" SNGL RIB LINEAL W/ DART | 6 | 50 | Standard |



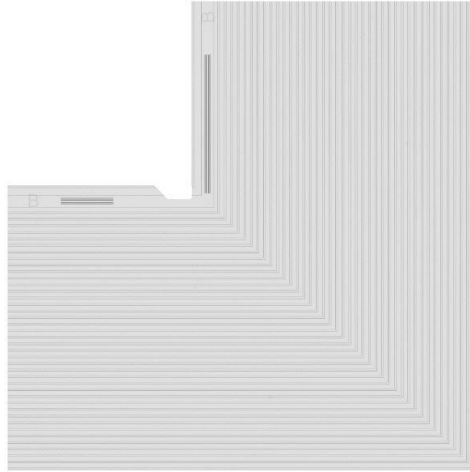
| SKU | Description | Width | FT/Case | Stock Class |
|-------------|--------------------------------------|-------|---------|-------------|
| ETA16423S4Z | ETA SYS3- 8" SNGL RIB LINEAL W/ DART | 8 | 50 | Standard |



| SKU | Description | Width | FT/Case | Stock Class |
|---------------|--|-------|---------------|-------------|
| ETA System 3A | ETA SYS3 PART A 2D MOLDED CORNER W/ DART | n/a | 8 Corners/Bag | Standard |



| SKU | Description | Width | FT/Case | Stock Class |
|---------------|---|-------|---------------|-------------|
| ETA System 3B | ETA SYS3 PART B 2D MOLDED CORNER W/ DART | n/a | 8 Corners/Bag | Standard |



0519/PETASYS3DS-GL

Please refer to our website at www.tremcosealants.com for the most up-to-date Product Data Sheets.



Tremco Commercial Sealants & Waterproofing

3735 Green Rd
Beachwood OH 44122
216.292.5000 / 800.321.7906

1451 Jacobson Ave
Ashland OH 44805
419.289.2050 / 800.321.6357

220 Wicksteed Ave
Toronto ON M4H1G7
416.421.3300 / 800.363.3213

1445 Rue de Coulomb
Boucherville QC J4B 7L8
514.521.9555