

### PRODUCT DESCRIPTION

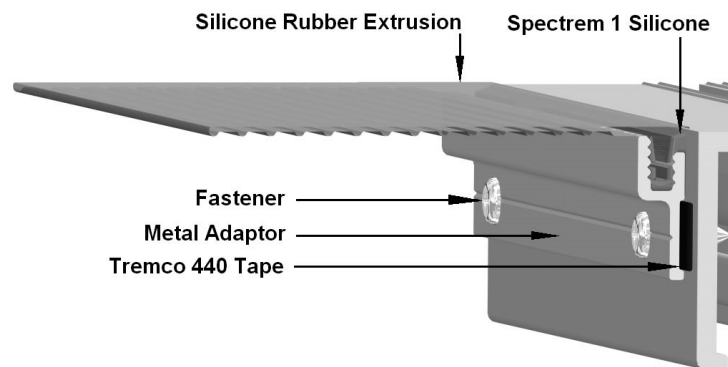
Proglaze<sup>®</sup> ETA System 1 is comprised of pre-engineered, finished aluminum and silicone materials used as the transition assembly between the window or wall system and adjacent air and vapor barrier materials. The system assembly is mechanically attached to the window and/or curtain wall's structural framing to ensure a durable connection and seal.

Proglaze ETA System 1 is comprised of the following components:

- **Silicone Rubber Extrusion (SRE):** Extruded, 40 durometer, translucent silicone, with a lock-in dart. The Silicone Extrusion is available in 3" (76.2 mm), 4" (101.6 mm) and 6" (152.5 mm) widths and packaged in 50 linear feet coils. For physical properties refer to Tremco's translucent Silicone Extruded Sheet data sheet.
- **Silicone Rubber Corners (SRC):** Pre-molded, 40 durometer, translucent silicone, with a lock-in dart. Dart is off-set 1.5" to allow a lap joint to be made with the Silicone Rubber Extrusion (SRE). Silicone Rubber Corners are available in mating 4" and 6" lengths.
- **Extruded Aluminum Adaptor (EAA):** Alodine finished, with pre-engineered race for receiving silicone lock-in dart. The Extruded Aluminum Adaptor is supplied in 5' lengths with predrilled holes every 6" on center.
- **Tremco 440 Tape:** 100% solid Polyisobutylene-cross linked butyl preformed sealant. Used to temporarily hold metal adaptor in position before mechanical fasteners are installed and to act as the secondary air and water seal is pre-applied to the metal adaptor. For physical properties refer to Tremco's 440 Tape data sheet.
- **Spectrem<sup>®</sup> 1 Silicone Sealant:** High movement, ultra-low modulus sealant utilized as a compatible adhesive and wet seal. For physical properties refer to Tremco's Spectrem 1 data sheet.

### BASIC USES

Proglaze ETA is a transition assembly for bridging continuously between the window and/or curtain wall openings and the adjacent air and vapor barrier materials. The system's design absorbs thermal movement and wind-loading stresses. The Proglaze ETA thin cross-section and low durometer allows the system to span and seal across irregular window geometries.



The translucent silicone material allows the installer and/or inspector to see through the gasket to verify the recommended amount of sealant is properly applied to ensure an effective seal is achieved, while the ribs of the gasket's design ensure a minimum sealant thickness.

The performance of Spectrem 1 is exceptional when used on the polyethylene face of Exoair 110, Exoair 110AT, Exoair TWF and cure surface of Exoair 120, Exoair 130, Exoair 220 and Exoair 230.

---

## AVAILABILITY

Please contact our Customer Service Department in Beachwood, Ohio at 800-321-7906, or Toronto at 800-363-3213.

---

## APPLICABLE STANDARDS

Proglaze ETA System 1 has been tested as a component of several wall assemblies meeting ASTM E2357, the Standard Test Method for Determining Air Leakage of Air Barrier Assemblies, and NFPA 285, the Standard Fire Test Method for Evaluation of Fire Propagation Characteristics of Exterior Non-Load-Bearing Wall Assemblies Containing Combustible Components.

---

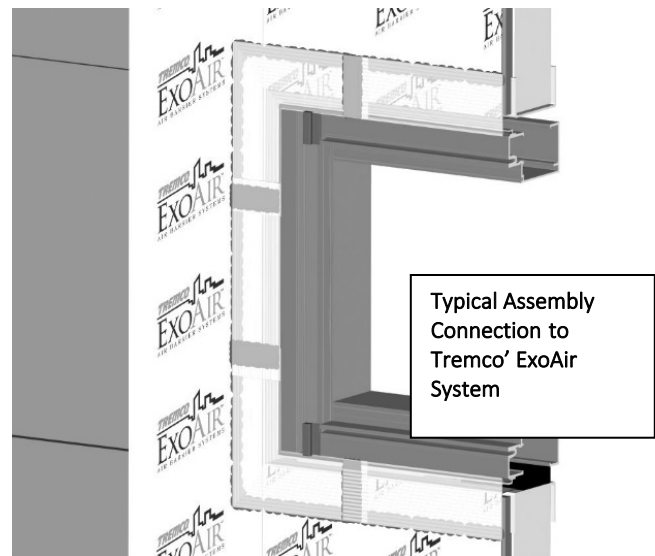
## LIMITATIONS

- Not intended to be utilized in a permanently exposed condition unless approved by Tremco.
- Not intended as a seal to untested substrates.

---

## WARRANTY

Tremco warrants its Products to be free of defects in materials but makes no warranty as to appearance or color. Since methods of application and on-site conditions are beyond our control and can affect performance, Tremco makes no other warranty, expressed, or implied including warranties of MERCHANTABILITY and FITNESS FOR A PARTICULAR PURPOSE with respect to Tremco Products. Tremco's sole obligation shall be, at its option, to replace or refund the purchase price of the quantity of Tremco Products proven to be defective, and Tremco shall not be liable for any loss or damage.



Please refer to our website at [www.tremcosealants.com](http://www.tremcosealants.com) for the most up-to-date Product Data Sheets.

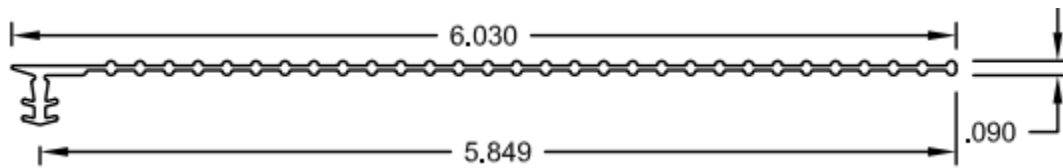
NOTE: All Tremco Safety Data Sheets (SDS) are in alignment with the Globally Harmonized System of Classification and Labelling of Chemicals (GHS) requirements.

## TYPICAL PHYSICAL PROPERTIES

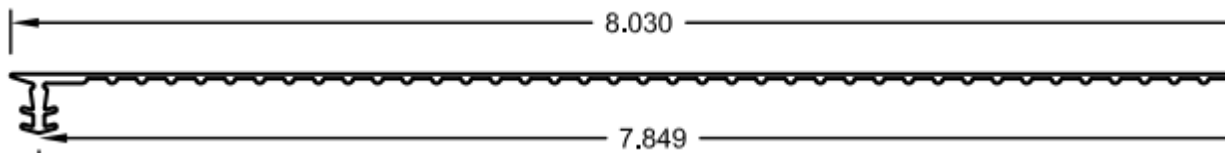
PROPERTY	TEST METHOD	TYPICAL RESULTS
Color		Translucent. Custom Colors are available
Flame Spread	ASTM E84	15
Smoke Development	ASTM E84	300
Hardness Type "A" Durometer	ASTM D2240	43
Compression Set	ASTM D395	22 hr at 212 °F (100 °C) -14.5%
Ozone Resistance	ASTM D1149	300 mPa, 100 hr at 158°F (70 °C) 20% elongation. No cracks.
Tensil Strength	ASTM D412	1130 psi (7.8 mPa)
Ultimate Elongation	ASTM D412	550%
Tear Strenght	ASTM D624	114lb/in (19.9kN/m)
Low Temp Flexibility	ASTM D746	-40 °F (-40 °C) Pass

SKU	Description	Width	Ft/Case	Stock Class
ETA13806S4Z	ETA SYS1-3" Single Rib Lineal w/ Dart	3"	50	Special
SKU	Description	Width	Ft/Case	Stock Class
ETA17780S4Z	ETA SYS1-3.67" Single Rib Lineal w/ Offset Dart	3.67"	50	Special
SKU	Description	Width	Ft/Case	Stock Class
ETA20454S4Z	ETA SYS1-4" Single Rib Lineal w/ Dart	4"	50	Standard
SKU	Description	Width	Ft/Case	Stock Class
ETA15191S4	ETA SYS1-6" Single Rib Lineal w/ Dart	6"	50	Standard

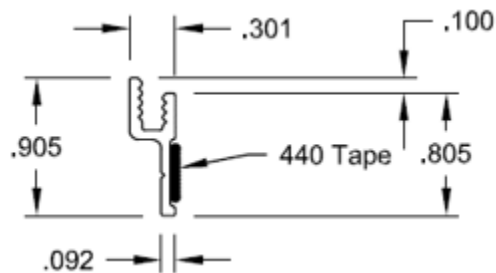
SKU	Description	Width	Ft/Case	Stock Class
ETA18937S4Z	ETA SYS1-6" Double Rib Lineal w/ Dart	6"	50	Special



SKU	Description	Width	Ft/Case	Stock Class
ETA20579S4Z	ETA SYS1-8" Single Rib Lineal w/ Dart	8"	50	Special



SKU	Description	length	Ea/Case	Stock Class
ETA15265 METAL	ETA ACC Metal Adapter w/ Holes and Tape	5'	10 (total of 50')	Standard



SKU	Description	Width	Corners/ Bag	Stock Class
ETA SYSTEM 1A	ETA SYS1-6" 2D Molded Corner w/Dart	6"	8	Stock

