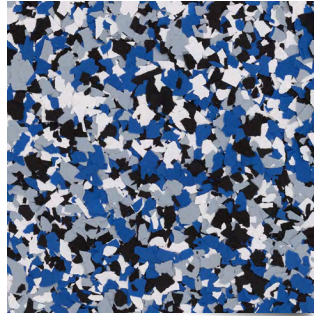


FLAKE COLORS



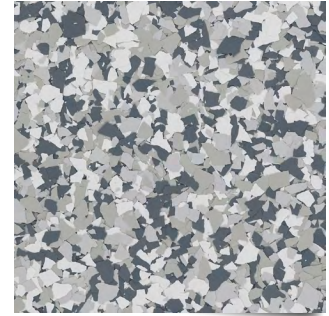
CABIN FEVER



ORBIT



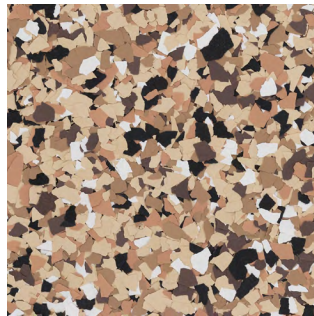
DOMINO



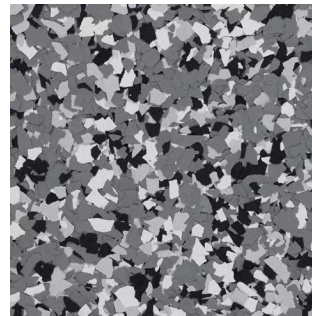
GRAVEL



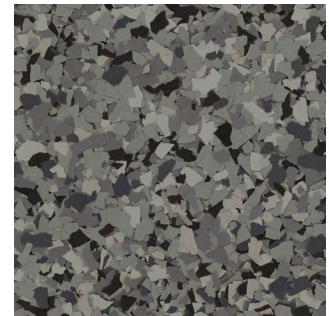
SHORELINE



OUTBACK



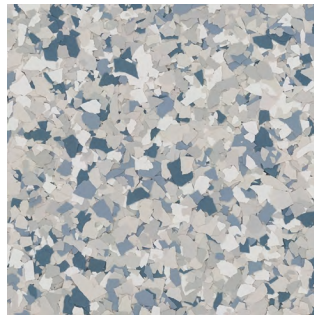
WOMBAT



NIGHTFALL



CREEK BED

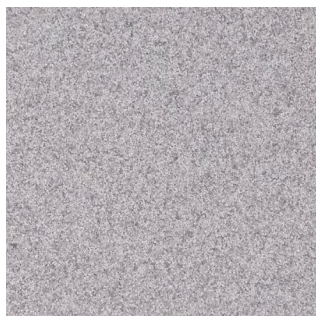


TIDAL WAVE

All colors shown are approximate and may not reflect sheen or shade precisely, as varying amounts of aggregate will alter light-reflecting properties.

Tremco always recommends a test patch to gain final color approval. Different lighting conditions can influence color appearance: for truer color please view in daylight. Some colors may require a minimum quantity. Custom colors are available upon request. Contact Tremco Customer Service for more information.

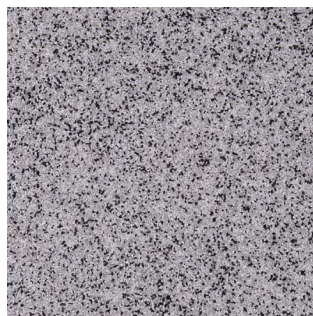
QUARTZ COLORS



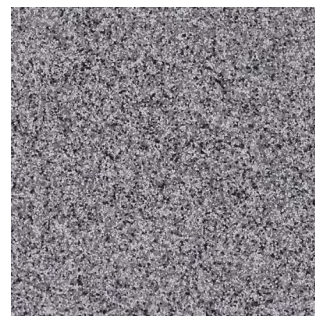
CRYSTAL



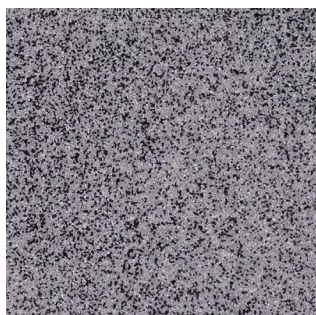
QUICKSAND



DALMATIAN



ECLIPSE



MATRIX



TWILIGHT



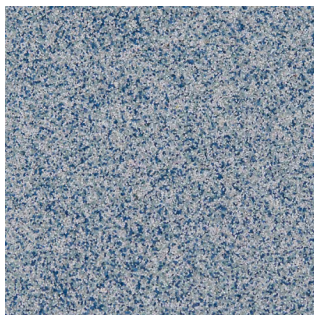
COCONUT



BISCUIT



DAVENPORT



MARINA

Tremco | 3735 Green Road | Beachwood, OH 44122 | US: 800.852.9068 | CAN: 800.363.3213 | tremcosealants.com

Tremco Construction Products Group (CPG) brings together Tremco Incorporated's Commercial Sealants & Waterproofing and Roofing & Building Maintenance operating divisions; Dryvit Systems, Inc.; Nudura Inc.; Willseal; Weatherproofing Technologies, Inc. and Weatherproofing Technologies Canada, Inc.

Tremco® is a registered trademark of Tremco Incorporated. Willseal is a registered trademark of Willseal. Use of the ® symbol indicates registration with the US Patent & Trademark Office and the Canadian Intellectual Property Office.

DOCCODE/MoYR

Part of
 **TREMCO**
Construction Products Group

tremcocpg.com