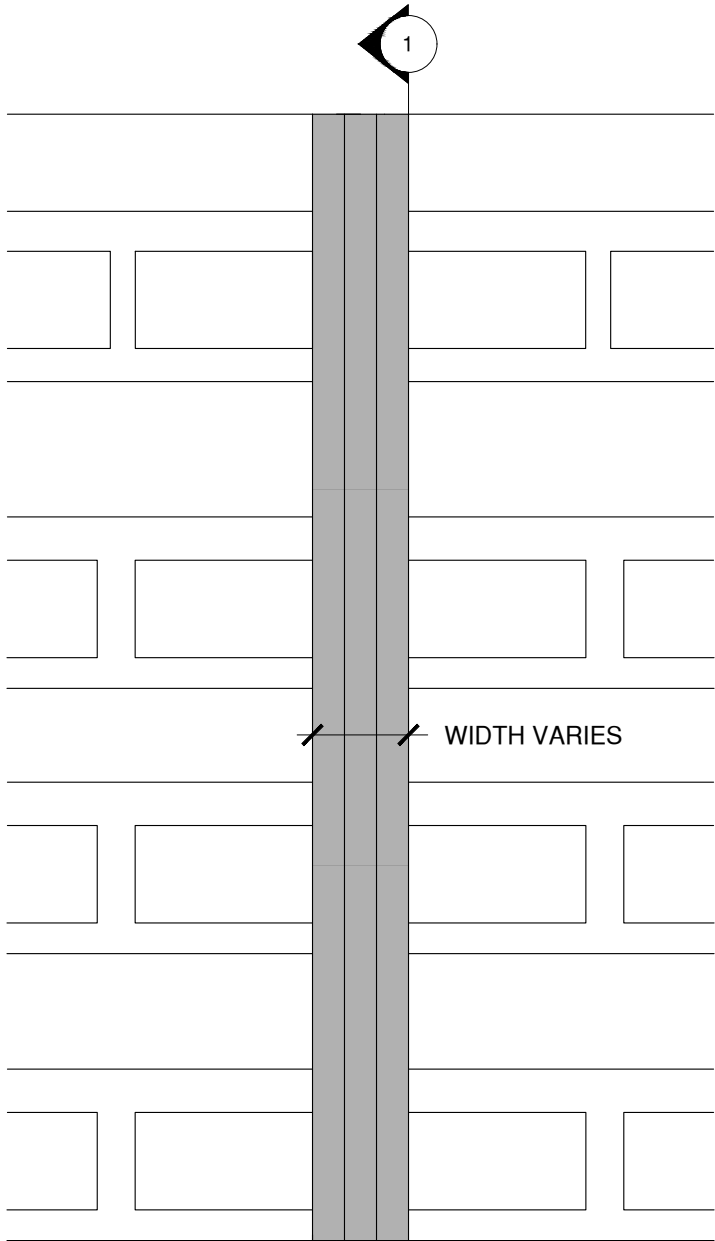


NOTE: REFER TO TREMCO'S PUBLISHED APPLICATION INSTRUCTIONS FOR ACCEPTABLE JOINT SIDE WALL SUBSTRATE CONDITIONS PRIOR TO INSTALLATION

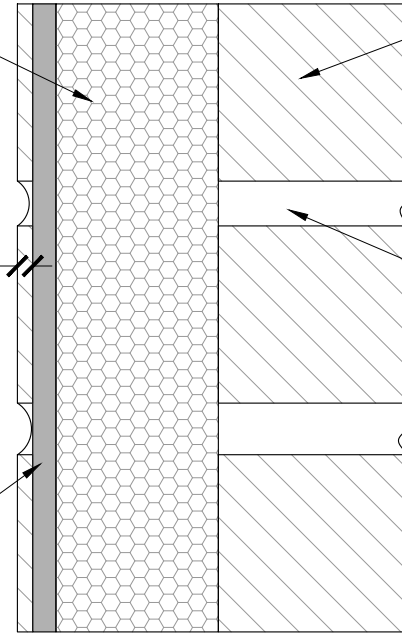


EXISTING BRICK WALL

WILLSEAL ACRYLIC IMPREGNATED FOAM

SET DEPTH VARIES

FACTORY APPLIED AND CURED SILICONE TOPPING



EXISTING BRICK

EXISTING MORTAR

1 SECTION VIEW

The architecture, engineering, and design of the project using the Willseal products are the responsibility of the project's design professional. All products and systems must comply with local building codes and standards. This detail is for general information and guidance only and Willseal specifically disclaims any liability for the use of this detail. The project design professional determines, in its sole discretion, whether this detail or a functionally equivalent detail is best suited for the project. This detail is subject to change without notice. Contact Willseal to ensure you have the most recent version.

Willseal Seismic SAF-V



Willseal Technical Support: 800-274-2813

Detail: Willseal Seismic SAF-V at Masonry Application

Drawn by: KAB

Checked by: AM

Scale: NTS

Date: 2/23/2022

File Name:

WS-SAFV-WW-02



Construction Products Group

www.tremcocpg.com